

Anti-IRGM antibody ab69494

★★★★★ [2 Abreviews](#) [11 References](#) [2 图像](#)

概述

产品名称	Anti-IRGM抗体
描述	兔多克隆抗体to IRGM
宿主	Rabbit
经测试应用	适用于: ICC/IF, WB, IHC-P
种属反应性	与反应: Human
免疫原	A 17 amino acid peptide near the amino terminus of human IRGM.
常规说明	<p>The Life Science industry has been in the grips of a reproducibility crisis for a number of years. Abcam is leading the way in addressing this with our range of recombinant monoclonal antibodies and knockout edited cell lines for gold-standard validation. Please check that this product meets your needs before purchasing.</p> <p>If you have any questions, special requirements or concerns, please send us an inquiry and/or contact our Support team ahead of purchase. Recommended alternatives for this product can be found below, along with publications, customer reviews and Q&As</p>

性能

形式	Liquid
存放说明	Shipped at 4°C. Store at +4°C short term (1-2 weeks). Store at -20°C.
存储溶液	<p>pH: 7.2</p> <p>Preservative: 0.02% Sodium azide</p> <p>Constituent: PBS</p>
纯度	Immunogen affinity purified
克隆	多克隆
同种型	IgG

应用

The Abpromise guarantee **Abpromise™** 承诺保证使用ab69494于以下的经测试应用

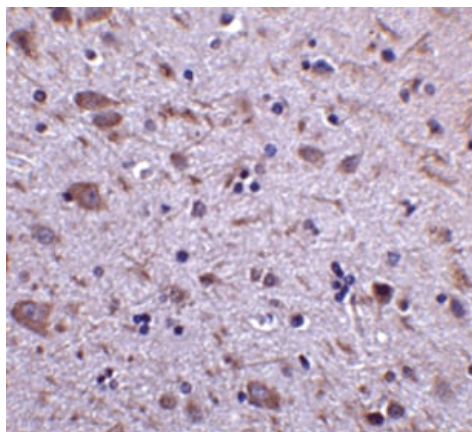
“应用说明”部分 下显示的仅为推荐的起始稀释度;实际最佳的稀释度/浓度应由使用者检定。

应用	Ab评论	说明
ICC/IF		Use at an assay dependent concentration. PubMed: 21102437
WB	★★★★★ (2)	Use at an assay dependent concentration. Predicted molecular weight: 20 kDa. Please refer to databases and the literature for the expected molecular weights of species orthologues.
IHC-P		Use a concentration of 5 µg/ml. Perform heat mediated antigen retrieval with citrate buffer pH 6 before commencing with IHC staining protocol.

靶标

功能	Putative GTPase which is required for clearance of acute protozoan and bacterial infections. Functions in innate immune response probably through regulation of autophagy. May regulate proinflammatory cytokine production and prevent endotoxemia upon infection. May also play a role in macrophages adhesion and motility.
组织特异性	Widely expressed (at protein level). Expressed in several tissues including colon, small bowel and peripheral blood leukocytes.
疾病相关	Defects in IRGM are the cause of susceptibility to inflammatory bowel disease type 19 (IBD19) [MIM:612278]. A chronic, relapsing inflammation of the gastrointestinal tract with a complex etiology. It is subdivided into Crohn disease and ulcerative colitis phenotypes. Crohn disease may affect any part of the gastrointestinal tract from the mouth to the anus, but most frequently it involves the terminal ileum and colon. Bowel inflammation is transmural and discontinuous; it may contain granulomas or be associated with intestinal or perianal fistulas. In contrast, in ulcerative colitis, the inflammation is continuous and limited to rectal and colonic mucosal layers; fistulas and granulomas are not observed. Both diseases include extraintestinal inflammation of the skin, eyes, or joints.
序列相似性	Belongs to the interferon-inducible GTPase family.
细胞定位	Golgi apparatus membrane. Cell membrane. Cytoplasmic vesicle > phagosome membrane. Cytoplasmic vesicle > autophagosome membrane. Cell projection > phagocytic cup. Behaves like an integral membrane protein (By similarity). Recruited to the plasma membrane around forming phagocytic cups, it remains associated with maturing autophagosomes (By similarity). Preferentially associated with cis- and medial-Golgi.

图片



Immunohistochemistry (Formalin/PFA-fixed paraffin-embedded sections) - Anti-IRGM antibody (ab69494)

Paraffin-embedded human thymus tissue stained for IRGM using ab69494 at 5 µg/ml in immunohistochemical analysis.

Immunohistochemistry (Formalin/PFA-fixed paraffin-embedded sections) - Anti-IRGM antibody (ab69494)

IHC image of ab69494 staining in normal human hippocampus formalin fixed paraffin embedded tissue section, performed on a Leica Bond™ system using the standard protocol F. The section was pre-treated using heat mediated antigen retrieval with sodium citrate buffer (pH6, epitope retrieval solution 1) for 20 mins. The section was then incubated with ab69494, 5µg/ml, for 15 mins at room temperature and detected using an HRP conjugated compact polymer system. DAB was used as the chromogen. The section was then counterstained with haematoxylin and mounted with DPX.

For other IHC staining systems (automated and non-automated) customers should optimize variable parameters such as antigen retrieval conditions, primary antibody concentration and antibody incubation times.

Please note: All products are "FOR RESEARCH USE ONLY. NOT FOR USE IN DIAGNOSTIC PROCEDURES"

Our Abpromise to you: Quality guaranteed and expert technical support

- Replacement or refund for products not performing as stated on the datasheet
- Valid for 12 months from date of delivery

- Response to your inquiry within 24 hours
- We provide support in Chinese, English, French, German, Japanese and Spanish
- Extensive multi-media technical resources to help you
- We investigate all quality concerns to ensure our products perform to the highest standards

If the product does not perform as described on this datasheet, we will offer a refund or replacement. For full details of the Abpromise, please visit <https://www.abcam.cn/abpromise> or contact our technical team.

Terms and conditions

- Guarantee only valid for products bought direct from Abcam or one of our authorized distributors