

### Anti-IRE1 antibody ab37117

[3 References](#) [2 图像](#)

#### 概述

---

产品名称	Anti-IRE1抗体
描述	兔多克隆抗体to IRE1
宿主	Rabbit
经测试应用	适用于: ICC/IF, WB
种属反应性	与反应: Mouse
免疫原	Synthetic peptide corresponding to 15 amino acids near the N terminus of the human IRE1 protein.
阳性对照	A20 cell lysate.
常规说明	<p>The Life Science industry has been in the grips of a reproducibility crisis for a number of years. Abcam is leading the way in addressing this with our range of recombinant monoclonal antibodies and knockout edited cell lines for gold-standard validation. Please check that this product meets your needs before purchasing.</p> <p>If you have any questions, special requirements or concerns, please send us an inquiry and/or contact our Support team ahead of purchase. Recommended alternatives for this product can be found below, along with publications, customer reviews and Q&amp;As</p>

#### 性能

---

形式	Liquid
存放说明	Shipped at 4°C. Store at +4°C.
存储溶液	pH: 7.2 Preservative: 0.02% Sodium azide Constituent: PBS
纯度	Immunogen affinity purified
克隆	多克隆
同种型	IgG

#### 应用

---

The Abpromise guarantee

**Abpromise™** 承诺保证使用ab37117于以下的经测试应用

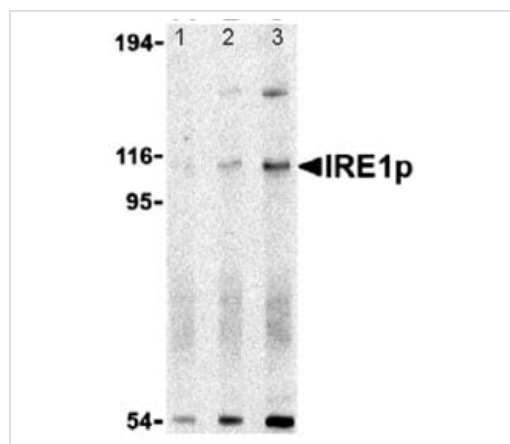
“应用说明”部分 下显示的仅为推荐的起始稀释度;实际最佳的稀释度/浓度应由使用者检定。

应用	Ab评论	说明
ICC/IF		Use a concentration of 1 µg/ml.
WB		Use a concentration of 0.5 - 2 µg/ml. Detects a band of approximately 107 kDa (predicted molecular weight: 110 kDa).

## 靶标

<b>功能</b>	Senses unfolded proteins in the lumen of the endoplasmic reticulum via its N-terminal domain which leads to enzyme auto-activation. The active endoribonuclease domain splices XBP1 mRNA to generate a new C-terminus, converting it into a potent unfolded-protein response transcriptional activator and triggering growth arrest and apoptosis.
<b>组织特异性</b>	Ubiquitously expressed. High levels observed in pancreatic tissue.
<b>序列相似性</b>	Belongs to the protein kinase superfamily. Ser/Thr protein kinase family. Contains 1 KEN domain. Contains 1 protein kinase domain.
<b>翻译后修饰</b>	Autophosphorylated.
<b>细胞定位</b>	Endoplasmic reticulum membrane.

## 图片



Western blot - Anti-IRE1 antibody (ab37117)

**All lanes :** Anti-IRE1 antibody (ab37117)

**Lane 1 :** ab37117 at 0.5µg/ml + A20 cell lysate

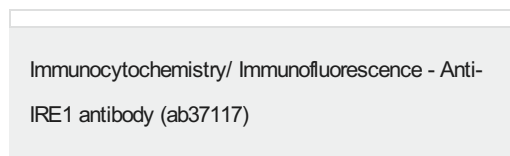
**Lane 2 :** ab37117 at 1µg/ml + A20 Cell lysate

**Lane 3 :** ab37117 at 2µg/ml + A20 cell lysate

**Predicted band size:** 110 kDa

**Observed band size:** 107 kDa

**Additional bands at:** 150 kDa, 55 kDa. We are unsure as to the identity of these extra bands.



Immunocytochemistry/ Immunofluorescence - Anti-IRE1 antibody (ab37117)

Immunofluorescence of IRE1p in A20 cells using ab37117 at 10 µg/ml.

**Please note:** All products are "FOR RESEARCH USE ONLY. NOT FOR USE IN DIAGNOSTIC PROCEDURES"

## **Our Abpromise to you: Quality guaranteed and expert technical support**

---

- Replacement or refund for products not performing as stated on the datasheet
- Valid for 12 months from date of delivery
- Response to your inquiry within 24 hours
  
- We provide support in Chinese, English, French, German, Japanese and Spanish
- Extensive multi-media technical resources to help you
- We investigate all quality concerns to ensure our products perform to the highest standards

If the product does not perform as described on this datasheet, we will offer a refund or replacement. For full details of the Abpromise, please visit <https://www.abcam.cn/abpromise> or contact our technical team.

## **Terms and conditions**

---

- Guarantee only valid for products bought direct from Abcam or one of our authorized distributors