

Anti-IRE1 antibody ab37073

★★★★★ [5 Abreviews](#) [132 References](#) [8 图像](#)

概述	
产品名称	Anti-IRE1抗体
描述	兔多克隆抗体to IRE1
宿主	Rabbit
经测试应用	适用于: WB, ICC, IHC-P
种属反应性	与反应: Mouse, Rat, Human
免疫原	Synthetic peptide consisting of 16 amino acid from near the carboxy terminus (Human).
阳性对照	WB: Rat brain tissue lysate, A20 and HeLa cell lysates. IHC-P: Rat and Human small intestine tissue. ICC: A20 cells.
常规说明	<p>The Life Science industry has been in the grips of a reproducibility crisis for a number of years. Abcam is leading the way in addressing this with our range of recombinant monoclonal antibodies and knockout edited cell lines for gold-standard validation. Please check that this product meets your needs before purchasing.</p> <p>If you have any questions, special requirements or concerns, please send us an inquiry and/or contact our Support team ahead of purchase. Recommended alternatives for this product can be found below, along with publications, customer reviews and Q&As</p>
性能	
形式	Liquid
存放说明	Shipped at 4°C. Store at +4°C short term (1-2 weeks). Store at -20°C. Avoid freeze / thaw cycle.
存储溶液	pH: 7.2 Preservative: 0.02% Sodium azide Constituent: PBS
纯度	Immunogen affinity purified
克隆	多克隆
同种型	IgG
应用	

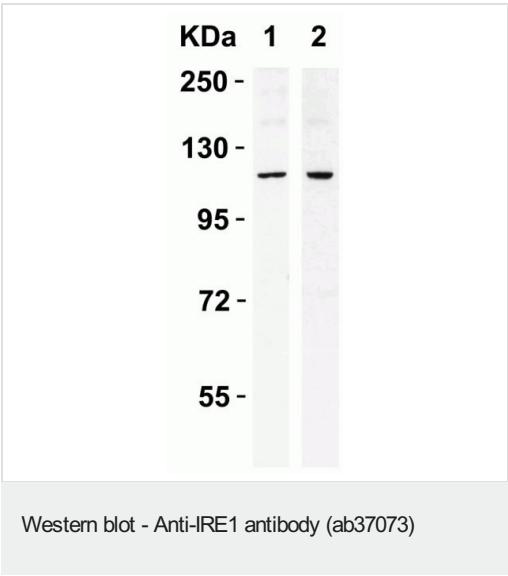
“应用说明”部分 下显示的仅为推荐的起始稀释度;实际最佳的稀释度/浓度应由使用者检定。

应用	Ab评论	说明
WB	★★★★★ (4)	Use a concentration of 0.5 - 2 µg/ml. Detects a band of approximately 107 kDa (predicted molecular weight: 110 kDa). Please note there is a smaller isoform of IRE1 in rat (predicted molecular weight:68.6kDa; accession number is EDM06401). Block for 2 hours at RT or overnight at 4C using 5% non-fat milk. Primary ab incubation: 1 h incubation at RT in 5% NFDM/TBST.
ICC		Use a concentration of 1 - 2 µg/ml.
IHC-P		Use a concentration of 2 µg/ml. Perform heat mediated antigen retrieval with citrate buffer pH 6 before commencing with IHC staining protocol.

靶标

功能	Senses unfolded proteins in the lumen of the endoplasmic reticulum via its N-terminal domain which leads to enzyme auto-activation. The active endoribonuclease domain splices XBP1 mRNA to generate a new C-terminus, converting it into a potent unfolded-protein response transcriptional activator and triggering growth arrest and apoptosis.
组织特异性	Ubiquitously expressed. High levels observed in pancreatic tissue.
序列相似性	Belongs to the protein kinase superfamily. Ser/Thr protein kinase family. Contains 1 KEN domain. Contains 1 protein kinase domain.
翻译后修饰	Autophosphorylated.
细胞定位	Endoplasmic reticulum membrane.

图片



All lanes : Anti-IRE1 antibody (ab37073) at 0.4 µg/ml

Lane 1 : Caco-2 Cell Lysate

Lane 2 : SK-N-SH Cell Lysate

Lysates/proteins at 15 µg per lane.

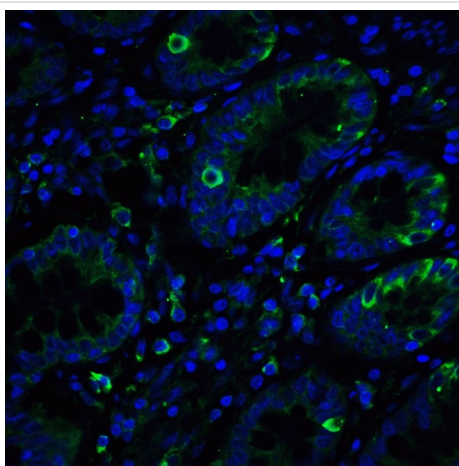
Secondary

All lanes : Goat Anti-Rabbit IgG (HRP) at 1/10000 dilution

Predicted band size: 110 kDa

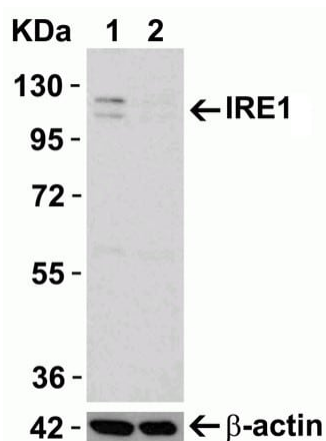
Observed band size: 110 kDa

Diluting buffer and concentration: 5% NFDM/TBST.



Immunohistochemistry (Formalin/PFA-fixed paraffin-embedded sections) - Anti-IRE1 antibody (ab37073)

Immunofluorescent analysis of 4% paraformaldehyde fixed Human Small Intestine Tissue labeling IRE1 with ab37073 at 20 µg/mL, followed by goat anti-rabbit IgG secondary antibody at 1/500 dilution (green) and DAPI staining (blue).



Western blot - Anti-IRE1 antibody (ab37073)

All lanes : Anti-IRE1 antibody (ab37073) at 0.5 µg/ml

Lane 1 : Wild-type HeLa Cell Lysate

Lane 2 : IRE1 knockout HeLa Cell Lysate

Lysates/proteins at 10 µg per lane.

Secondary

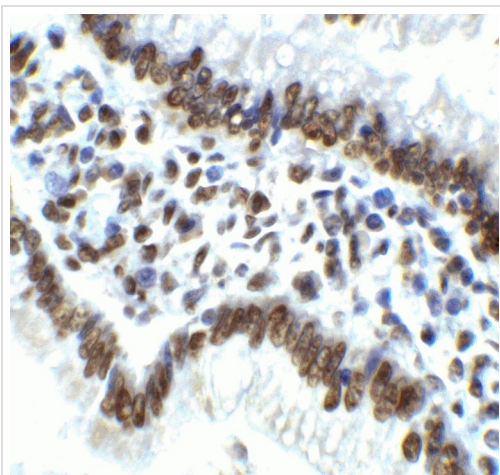
All lanes : Goat Anti-Rabbit IgG (HRP) at 1/10000 dilution

Predicted band size: 110 kDa

Observed band size: 110 kDa

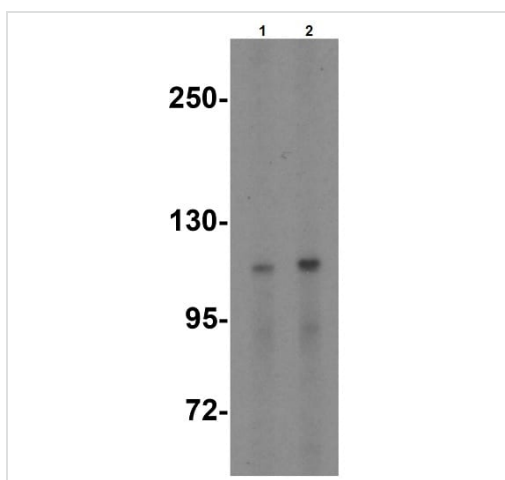
Diluting buffer and concentration: 1 hour incubation at room temperature in 5% NFDM/TBST.

Beta-actin antibody (1 µg/mL) used as loading control.



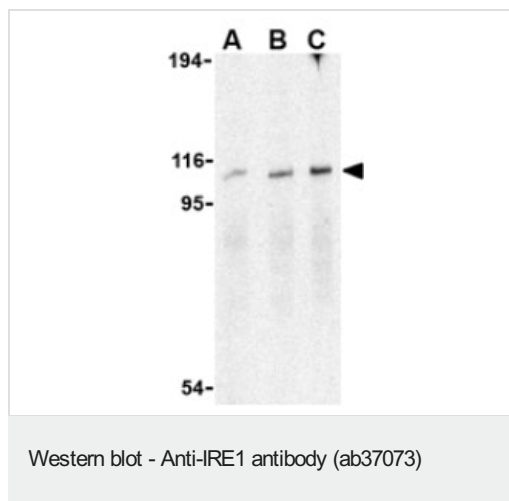
Immunohistochemistry (Formalin/PFA-fixed paraffin-embedded sections) - Anti-IRE1 antibody (ab37073)

Immunohistochemical analysis of paraffin-embedded Rat Small Intestine Tissue using ab37073 at 2 $\mu\text{g/ml}$. Tissue was fixed with formaldehyde and blocked with 10% serum for 1 h at RT; antigen retrieval was by heat mediation with a citrate buffer (pH6). Samples were incubated with primary antibody overnight at 4°C. A goat anti-rabbit IgG H&L (HRP) at 1/250 was used as secondary. Counter stained with Hematoxylin.



Western blot - Anti-IRE1 antibody (ab37073)

Western Blot of rat brain lysate labeling IRE1 with Anti-IRE1 antibody (ab37073) at (1) 0.5 and (2) 1 $\mu\text{g/ml}$.



Lane 1 : Anti-IRE1 antibody (ab37073) at 0.5 µg/ml

Lane 2 : Anti-IRE1 antibody (ab37073) at 1 µg/ml

Lane 3 : Anti-IRE1 antibody (ab37073) at 2 µg/ml

All lanes : A20 cell lysate

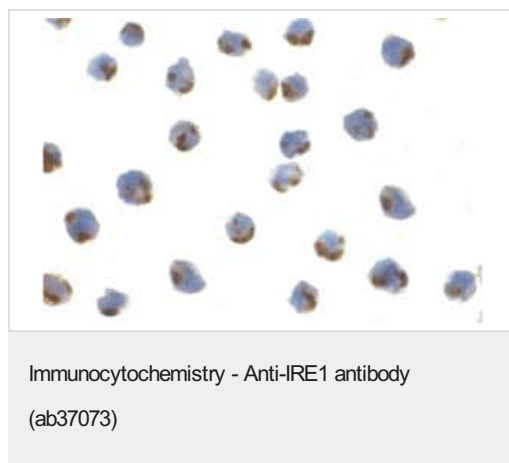
Lysates/proteins at 15 µg per lane.

Secondary

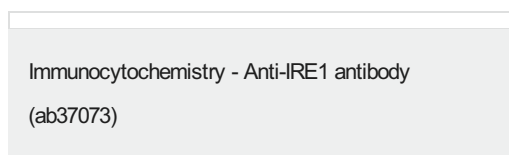
All lanes : goat anti-rabbit HRP at 1/10000 dilution

Predicted band size: 110 kDa

Observed band size: 107 kDa



ab37073, at 1 µg/ml, staining IRE1 in A20 cells with by ICC.



Immunocytochemistry/Immunofluorescence of IRE1p in A20 cells using ab37073 at 2 µg/ml.

Please note: All products are "FOR RESEARCH USE ONLY. NOT FOR USE IN DIAGNOSTIC PROCEDURES"

Our Abpromise to you: Quality guaranteed and expert technical support

- Replacement or refund for products not performing as stated on the datasheet
- Valid for 12 months from date of delivery
- Response to your inquiry within 24 hours
- We provide support in Chinese, English, French, German, Japanese and Spanish
- Extensive multi-media technical resources to help you
- We investigate all quality concerns to ensure our products perform to the highest standards

If the product does not perform as described on this datasheet, we will offer a refund or replacement. For full details of the Abpromise, please visit <https://www.abcam.cn/abpromise> or contact our technical team.

Terms and conditions

- Guarantee only valid for products bought direct from Abcam or one of our authorized distributors