


# Anti-IP3 receptor (phospho S1598) antibody ab111615

[1 References](#) [2 图像](#)

### 概述

产品名称	Anti-IP3 receptor (phospho S1598)抗体
描述	兔多克隆抗体to IP3 receptor (phospho S1598)
宿主	Rabbit
特异性	ab111615 detects endogenous levels of TPR1 only when phosphorylated at serine 1598(human)/1588(mouse).
经测试应用	<b>适用于:</b> IHC-P, ICC/IF
种属反应性	<b>与反应:</b> Human <b>预测可用于:</b> Mouse, Rat 
免疫原	Synthetic peptide. This information is proprietary to Abcam and/or its suppliers.
阳性对照	A549 cells; Human cervix carcinoma tissue.
常规说明	This antibody showed negative results in Western Blot  The Life Science industry has been in the grips of a reproducibility crisis for a number of years. Abcam is leading the way in addressing this with our range of recombinant monoclonal antibodies and knockout edited cell lines for gold-standard validation. Please check that this product meets your needs before purchasing.  If you have any questions, special requirements or concerns, please send us an inquiry and/or contact our Support team ahead of purchase. Recommended alternatives for this product can be found below, along with publications, customer reviews and Q&As

### 性能

形式	Liquid
存放说明	Shipped at 4°C. Store at -20°C. Stable for 12 months at -20°C.
存储溶液	pH: 7.40 Preservative: 0.02% Sodium azide Constituents: PBS, 50% Glycerol (glycerin, glycerine), 0.88% Sodium chloride  PBS (without Mg <sup>2+</sup> and Ca <sup>2+</sup> )
纯度	Immunogen affinity purified
纯化说明	ab111615 was affinity-purified from rabbit antiserum by affinity-chromatography using epitope-

specific phosphopeptide. The antibody against non-phosphopeptide was removed by chromatography using non-phosphopeptide corresponding to the phosphorylation site

**克隆** 多克隆  
**同种型** IgG

## 应用

**The Abpromise guarantee** **Abpromise™**承诺保证使用ab111615于以下的经测试应用

“应用说明”部分 下显示的仅为推荐的起始稀释度;实际最佳的稀释度/浓度应由使用者检定。

应用	Ab评论	说明
IHC-P		1/50 - 1/100. Perform heat mediated antigen retrieval with citrate buffer pH 6 before commencing with IHC staining protocol.
ICC/IF		1/100 - 1/500.

## 靶标

**功能** Intracellular channel that mediates calcium release from the endoplasmic reticulum following stimulation by inositol 1,4,5-trisphosphate.

**组织特异性** Widely expressed.

**疾病相关** Defects in ITPR1 are the cause of spinocerebellar ataxia type 15 (SCA15) (SCA15) [MIM:606658]. Spinocerebellar ataxia is a clinically and genetically heterogeneous group of cerebellar disorders. Patients show progressive incoordination of gait and often poor coordination of hands, speech and eye movements, due to degeneration of the cerebellum with variable involvement of the brainstem and spinal cord. SCA15 is an autosomal dominant cerebellar ataxia (ADCA). It is very slow progressing form with a wide range of onset, ranging from childhood to adult. Most patients remain ambulatory.

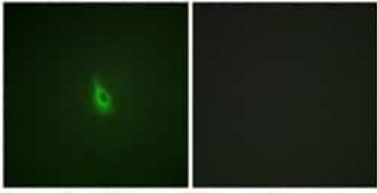
**序列相似性** Belongs to the InsP3 receptor family.  
Contains 5 MIR domains.

**结构域** The receptor contains a calcium channel in its C-terminal extremity. Its large N-terminal cytoplasmic region has the ligand-binding site in the N-terminus and modulatory sites in the middle portion immediately upstream of the channel region.

**翻译后修饰** Phosphorylated by cAMP kinase. Phosphorylation prevents the ligand-induced opening of the calcium channels.  
Phosphorylated on tyrosine residues.

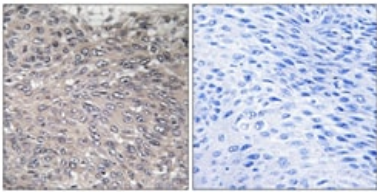
**细胞定位** Endoplasmic reticulum membrane.

## 图片



Immunocytochemistry/ Immunofluorescence - Anti-IP3 receptor (phospho S1598) antibody (ab111615)

ab111615 at 1/100 dilution staining ITPR1 in A549 cells by Immunofluorescence. The picture on the right is treated with the synthesized phosphopeptide.



Immunohistochemistry (Formalin/PFA-fixed paraffin-embedded sections) - Anti-IP3 receptor (phospho S1598) antibody (ab111615)

ab111615 at 1/50 dilution staining ITPR1 in paraffin-embedded Human Cervix tissue by Immunohistochemistry. The image on the right is treated with the synthesized phosphopeptide.

**Please note:** All products are "FOR RESEARCH USE ONLY. NOT FOR USE IN DIAGNOSTIC PROCEDURES"

### Our Abpromise to you: Quality guaranteed and expert technical support

---

- Replacement or refund for products not performing as stated on the datasheet
- Valid for 12 months from date of delivery
- Response to your inquiry within 24 hours
- We provide support in Chinese, English, French, German, Japanese and Spanish
- Extensive multi-media technical resources to help you
- We investigate all quality concerns to ensure our products perform to the highest standards

If the product does not perform as described on this datasheet, we will offer a refund or replacement. For full details of the Abpromise, please visit <https://www.abcam.cn/abpromise> or contact our technical team.

### Terms and conditions

---

- Guarantee only valid for products bought direct from Abcam or one of our authorized distributors