

# Anti-IP3 receptor antibody [EPR4536] ab125076

敲除验证 重组 RabMAb

[2 References](#) [5 图像](#)

### 概述

产品名称	Anti-IP3 receptor抗体[EPR4536]
描述	兔单克隆抗体[EPR4536] to IP3 receptor
宿主	Rabbit
经测试应用	适用于: WB, IHC-P, Flow Cyt (Intra) 不适用于: IP
种属反应性	与反应: Human 不与反应: Mouse, Rat
免疫原	Synthetic peptide within Human IP3 receptor aa 1-100. The exact sequence is proprietary.
阳性对照	WB: SH-SY5Y, HeLa and HuT78 cell lysates; IHC-P: Human brain tissue; Flow Cyt (intra): SH-SY5Y cells;
常规说明	This product is a recombinant monoclonal antibody, which offers several advantages including: - High batch-to-batch consistency and reproducibility - Improved sensitivity and specificity - Long-term security of supply - Animal-free production For more information <a href="#">see here</a> . Our RabMAb <sup>®</sup> technology is a patented hybridoma-based technology for making rabbit monoclonal antibodies. For details on our patents, please refer to <a href="#">RabMAb<sup>®</sup> patents</a> .

### 性能

形式	Liquid
存放说明	Shipped at 4°C. Store at -20°C. Stable for 12 months at -20°C.
存储溶液	pH: 7.20 Preservative: 0.05% Sodium azide Constituents: 0.1% BSA, 40% Glycerol (glycerin, glycerine), 9.85% Tris glycine, 50% Tissue culture supernatant
纯度	Protein A purified
克隆	单克隆
克隆编号	EPR4536

同种型

IgG

应用

The Abpromise guarantee

**Abpromise™**承诺保证使用ab125076于以下的经测试应用

“应用说明”部分 下显示的仅为推荐的起始稀释度;实际最佳的稀释度/浓度应由使用者检定。

应用	Ab评论	说明
WB		1/1000 - 1/10000. Detects a band of approximately 320 kDa (predicted molecular weight: 314 kDa).
IHC-P		1/50 - 1/100. Perform heat mediated antigen retrieval with citrate buffer pH 6 before commencing with IHC staining protocol.
Flow Cyt (Intra)		1/500. <b>ab172730</b> - Rabbit monoclonal IgG, is suitable for use as an isotype control with this antibody.

应用说明

Is unsuitable for IP.

靶标

功能

Intracellular channel that mediates calcium release from the endoplasmic reticulum following stimulation by inositol 1,4,5-trisphosphate.

组织特异性

Widely expressed.

疾病相关

Defects in ITPR1 are the cause of spinocerebellar ataxia type 15 (SCA15) (SCA15) [MIM:606658]. Spinocerebellar ataxia is a clinically and genetically heterogeneous group of cerebellar disorders. Patients show progressive incoordination of gait and often poor coordination of hands, speech and eye movements, due to degeneration of the cerebellum with variable involvement of the brainstem and spinal cord. SCA15 is an autosomal dominant cerebellar ataxia (ADCA). It is very slow progressing form with a wide range of onset, ranging from childhood to adult. Most patients remain ambulatory.

序列相似性

Belongs to the InsP3 receptor family.  
Contains 5 MIR domains.

结构域

The receptor contains a calcium channel in its C-terminal extremity. Its large N-terminal cytoplasmic region has the ligand-binding site in the N-terminus and modulatory sites in the middle portion immediately upstream of the channel region.

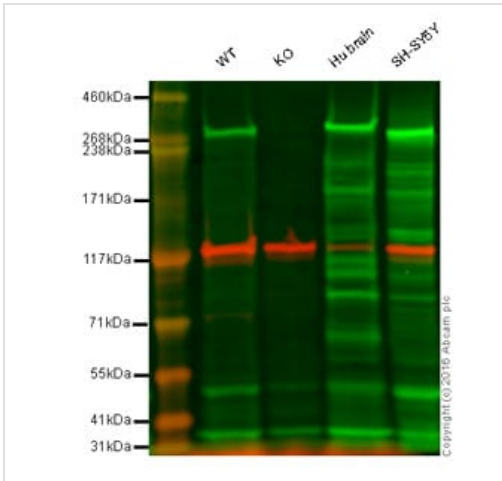
翻译后修饰

Phosphorylated by cAMP kinase. Phosphorylation prevents the ligand-induced opening of the calcium channels.  
Phosphorylated on tyrosine residues.

细胞定位

Endoplasmic reticulum membrane.

图片



Western blot - Anti-IP3 receptor antibody [EPR4536] (ab125076)

**Lane 1:** Wild-type HAP1 cell lysate (20 µg)

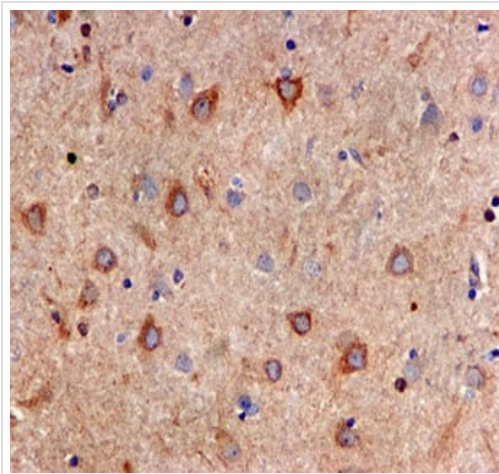
**Lane 2:** IP3 receptor knockout HAP1 cell lysate (20 µg)

**Lane 3:** Human brain tissue lysate (20 µg)

**Lane 4:** SH-SY5Y cell lysate (20 µg)

**Lanes 1 - 4:** Merged signal (red and green). Green - ab125076 observed at 270 kDa. Red - loading control, **ab18058**, observed at 124 kDa.

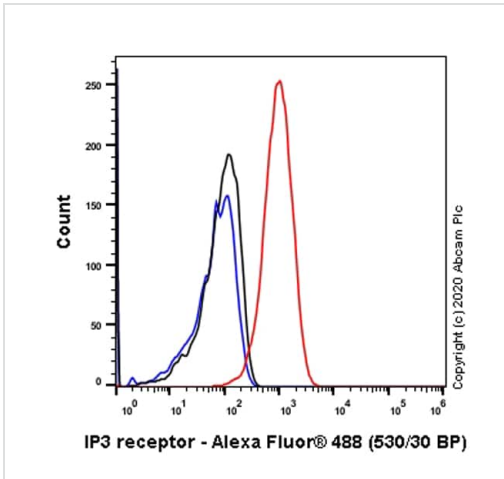
ab125076 was shown to specifically recognize IP3 receptor in wild-type HAP1 cells along with additional cross-reactive bands. No band was observed when IP3 receptor knockout samples were examined. Wild-type and IP3 receptor knockout samples were subjected to SDS-PAGE. ab125076 and **ab18058** (loading control to Vinculin) were diluted 1/1000 and 1/10,000 respectively and incubated overnight at 4°C. Blots were developed with Goat anti-Rabbit IgG H&L (IRDye® 800CW) preadsorbed (**ab216773**) and Goat anti-Mouse IgG H&L (IRDye® 680RD) preadsorbed (**ab216776**) secondary antibodies at 1/10,000 dilution for 1 hour at room temperature before imaging.



Immunohistochemistry (Formalin/PFA-fixed paraffin-embedded sections) - Anti-IP3 receptor antibody [EPR4536] (ab125076)

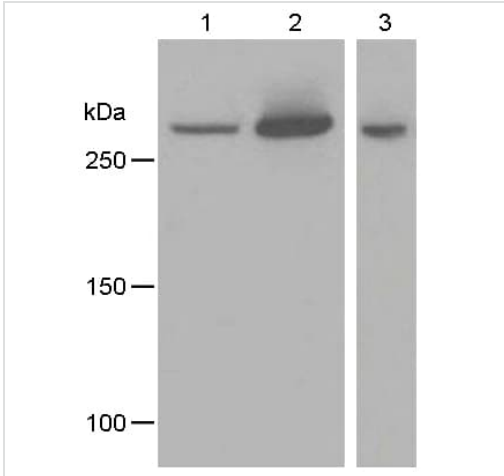
ab125076, at 1/50, staining IP3R in paraffin-embedded Human brain tissue by immunohistochemistry.

Perform heat mediated antigen retrieval with citrate buffer pH 6 before commencing with IHC staining protocol.



Flow Cytometry (Intracellular) - Anti-IP3 receptor antibody [EPR4536] (ab125076)

Flow Cytometry analysis of SH-SY5Y (Human neuroblastoma epithelial cell) cells labeling IP3 receptor with purified ab125076 at 1/500 dilution (1 µg/mL) (Red). Cells were fixed with 4% Paraformaldehyde and permeabilised with 90% Methanol. A Goat anti rabbit IgG (Alexa Fluor® 488, **ab150077**) secondary antibody was used at 1/2000. Isotype control - Rabbit monoclonal IgG (Black). Unlabeled control - Cell without incubation with primary antibody and secondary antibody (Blue).



Western blot - Anti-IP3 receptor antibody [EPR4536] (ab125076)

**All lanes** : Anti-IP3 receptor antibody [EPR4536] (ab125076) at 1/1000 dilution

**Lane 1** : SH-SY5Y cell lysate

**Lane 2** : HeLa cell lysate

**Lane 3** : HuT78 cell lysate





Lysates/proteins at 10 µg per lane.

**Secondary**

**All lanes** : Goat anti-Rabbit HRP at 1/2000 dilution

**Predicted band size:** 314 kDa

Why choose a recombinant antibody?

 <p><b>Research with confidence</b> Consistent and reproducible results</p>	 <p><b>Long-term and scalable supply</b> Recombinant technology</p>
 <p><b>Success from the first experiment</b> Confirmed specificity</p>	 <p><b>Ethical standards compliant</b> Animal-free production</p>

Anti-IP3 receptor antibody [EPR4536] (ab125076)

**Please note:** All products are "FOR RESEARCH USE ONLY. NOT FOR USE IN DIAGNOSTIC PROCEDURES"

### Our Abpromise to you: Quality guaranteed and expert technical support

---

- Replacement or refund for products not performing as stated on the datasheet
- Valid for 12 months from date of delivery
- Response to your inquiry within 24 hours
- We provide support in Chinese, English, French, German, Japanese and Spanish
- Extensive multi-media technical resources to help you
- We investigate all quality concerns to ensure our products perform to the highest standards

If the product does not perform as described on this datasheet, we will offer a refund or replacement. For full details of the Abpromise, please visit <https://www.abcam.cn/abpromise> or contact our technical team.

### Terms and conditions

---

- Guarantee only valid for products bought direct from Abcam or one of our authorized distributors