


Anti-INTS11 antibody ab75276

★★★★☆ [3 Abreviews](#) [5 References](#) [3 图像](#)

概述

产品名称	Anti-INTS11抗体
描述	兔多克隆抗体to INTS11
宿主	Rabbit
经测试应用	适用于: WB, IP, IHC-P
种属反应性	与反应: Mouse, Human 预测可用于: Horse, Chimpanzee, Rhesus monkey, Gorilla, Opossum, Orangutan, Elephant 
免疫原	Synthetic peptide corresponding to Human INTS11. Database link: NP_060341.2
阳性对照	HeLa, 293T and NIH3T3 whole cell lysates.
常规说明	<p>The Life Science industry has been in the grips of a reproducibility crisis for a number of years. Abcam is leading the way in addressing this with our range of recombinant monoclonal antibodies and knockout edited cell lines for gold-standard validation. Please check that this product meets your needs before purchasing.</p> <p>If you have any questions, special requirements or concerns, please send us an inquiry and/or contact our Support team ahead of purchase. Recommended alternatives for this product can be found below, along with publications, customer reviews and Q&As</p>

性能

形式	Liquid
存放说明	Shipped at 4°C. Upon delivery aliquot and store at -20°C. Avoid freeze / thaw cycles.
存储溶液	pH: 7 Preservative: 0.09% Sodium azide Constituents: 1.815% Tris, 1.764% Sodium citrate, 0.021% PBS
纯度	Immunogen affinity purified
纯化说明	ab75276 was affinity purified using an epitope specific to INTS11 immobilized on solid support.
克隆	多克隆
同种型	IgG

应用

The Abpromise guarantee

Abpromise™ 承诺保证使用 ab75276 于以下的经测试应用

“应用说明”部分 下显示的仅为推荐的起始稀释度;实际最佳的稀释度/浓度应由使用者检定。

应用	Ab评论	说明
WB	★★★★☆ (2)	1/2000 - 1/10000. Detects a band of approximately 68 kDa (predicted molecular weight: 68 kDa).
IP		Use at 2-5 µg/mg of lysate.
IHC-P		1/500 - 1/2000. Perform heat mediated antigen retrieval with citrate buffer pH 6 before commencing with IHC staining protocol.

靶标

功能

Catalytic component of the Integrator complex, a complex involved in the small nuclear RNAs (snRNA) U1 and U2 transcription and in their 3'-box-dependent processing. The Integrator complex is associated with the C-terminal domain (CTD) of RNA polymerase II largest subunit (POLR2A) and is recruited to the U1 and U2 snRNAs genes. Mediates the snRNAs 3' cleavage.

序列相似性

Belongs to the metallo-beta-lactamase superfamily. RNA-metabolizing metallo-beta-lactamase-like family. INTS11 subfamily.

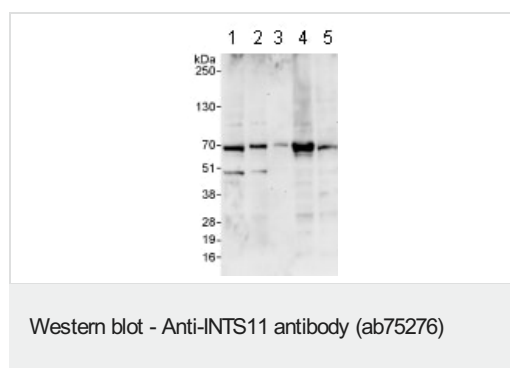
结构域

The HXHXDH motif is essential for the endoribonuclease activity of the CPSF complex.

细胞定位

Nucleus. Cytoplasm.

图片



All lanes : Anti-INTS11 antibody (ab75276) at 0.1 µg/ml

Lane 1 : HeLa whole cell lysate at 50 µg

Lane 2 : HeLa whole cell lysate at 15 µg

Lane 3 : HeLa whole cell lysate at 5 µg

Lane 4 : 293T whole cell lysate at 50 µg

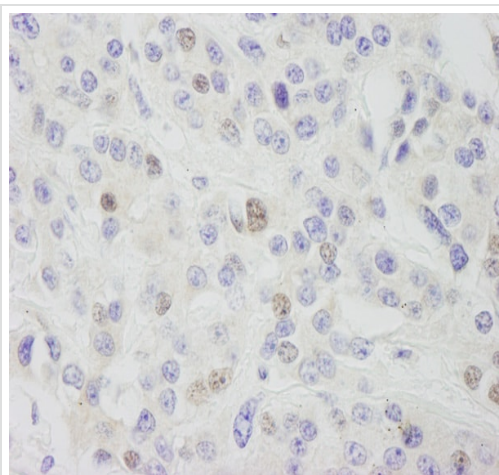
Lane 5 : NIH3T3 whole cell lysate at 50 µg

Developed using the ECL technique.

Predicted band size: 68 kDa

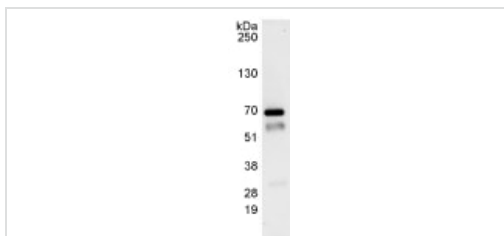
Observed band size: 68 kDa

Exposure time: 3 minutes



Immunohistochemistry (Formalin/PFA-fixed paraffin-embedded sections) - Anti-INTS11 antibody (ab75276)

Immunohistochemistry (Formalin/PFA-fixed paraffin-embedded sections) analysis of human breast carcinoma tissue labelling INTS11 with ab75276 at 1/1000 (1µg/ml). Detection: DAB.



Immunoprecipitation - Anti-INTS11 antibody (ab75276)

Detection of INTS11 by Western Blot of Immunoprecipitate. **ab75278** at 1µg/ml staining INTS11 in HeLa whole cell lysate immunoprecipitated using ab75276 at 3µg/mg lysate (1 mg/IP; 20% of IP loaded/lane).

Detection: Chemiluminescence with exposure time of 30 seconds.

Please note: All products are "FOR RESEARCH USE ONLY. NOT FOR USE IN DIAGNOSTIC PROCEDURES"

Our Abpromise to you: Quality guaranteed and expert technical support

- Replacement or refund for products not performing as stated on the datasheet
- Valid for 12 months from date of delivery
- Response to your inquiry within 24 hours
- We provide support in Chinese, English, French, German, Japanese and Spanish
- Extensive multi-media technical resources to help you
- We investigate all quality concerns to ensure our products perform to the highest standards

If the product does not perform as described on this datasheet, we will offer a refund or replacement. For full details of the Abpromise, please visit <https://www.abcam.cn/abpromise> or contact our technical team.

Terms and conditions

- Guarantee only valid for products bought direct from Abcam or one of our authorized distributors