

Anti-Intrinsic Factor antibody ab102049

[1 References](#) [2 图像](#)

概述

产品名称	Anti-Intrinsic Factor抗体
描述	兔多克隆抗体to Intrinsic Factor
宿主	Rabbit
经测试应用	适用于: WB
种属反应性	与反应: Mouse
免疫原	Recombinant full length protein within Human Intrinsic Factor aa 1-450. The exact immunogen sequence used to generate this antibody is proprietary information. If additional detail on the immunogen is needed to determine the suitability of the antibody for your needs, please contact our Scientific Support team to discuss your requirements.
阳性对照	Mouse stomach lysate. Transfected 293T cells.
常规说明	<p>The Life Science industry has been in the grips of a reproducibility crisis for a number of years. Abcam is leading the way in addressing this with our range of recombinant monoclonal antibodies and knockout edited cell lines for gold-standard validation. Please check that this product meets your needs before purchasing.</p> <p>If you have any questions, special requirements or concerns, please send us an inquiry and/or contact our Support team ahead of purchase. Recommended alternatives for this product can be found below, along with publications, customer reviews and Q&As</p>

性能

形式	Liquid
存放说明	Shipped at 4°C. Upon delivery aliquot. Store at -20°C or -80°C. Avoid freeze / thaw cycle.
存储溶液	pH: 7.4 Constituent: PBS
纯度	Protein A purified
克隆	多克隆
同种型	IgG

应用

The Abpromise guarantee

Abpromise™ 承诺保证使用ab102049于以下的经测试应用

“应用说明”部分 下显示的仅为推荐的起始稀释度;实际最佳的稀释度/浓度应由使用者检定。

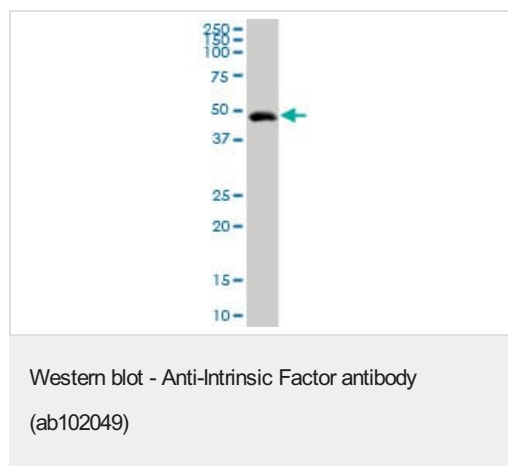
应用	Ab评论	说明
WB		1/500 - 1/1000. Predicted molecular weight: 46 kDa.

靶标

相关性 Intrinsic factor promotes absorption of the essential vitamin Cobalamin (Cbl) in the ileum by specific receptor mediated endocytosis. Defects in the gene GIF are the cause of hereditary intrinsic factor deficiency (IFD) also called congenital pernicious anemia. IFD is an autosomal recessive disorder characterized by megaloblastic anemia.

细胞定位 Secreted

图片



Anti-Intrinsic Factor antibody (ab102049) at 1/500 dilution + Mouse stomach lysate at 50 µg

Developed using the ECL technique.

Predicted band size: 46 kDa



All lanes : Anti-Intrinsic Factor antibody (ab102049) at 1/500 dilution

Lane 1 : Intrinsic Factor transfected lysate

Lane 2 : Non transfected lysate

Lysates/proteins at 25 µg per lane.

Developed using the ECL technique.

Predicted band size: 46 kDa

Please note: All products are "FOR RESEARCH USE ONLY. NOT FOR USE IN DIAGNOSTIC PROCEDURES"

Our Abpromise to you: Quality guaranteed and expert technical support

- Replacement or refund for products not performing as stated on the datasheet
- Valid for 12 months from date of delivery
- Response to your inquiry within 24 hours

- We provide support in Chinese, English, French, German, Japanese and Spanish
- Extensive multi-media technical resources to help you
- We investigate all quality concerns to ensure our products perform to the highest standards

If the product does not perform as described on this datasheet, we will offer a refund or replacement. For full details of the Abpromise, please visit <https://www.abcam.cn/abpromise> or contact our technical team.

Terms and conditions

- Guarantee only valid for products bought direct from Abcam or one of our authorized distributors