

Anti-Integrin beta 3 antibody [EPR2342] ab119992

重组 RabMAb

29 References 4 图像

概述	
产品名称	Anti-Integrin beta 3抗体[EPR2342]
描述	兔单克隆抗体[EPR2342] to Integrin beta 3
宿主	Rabbit
经测试应用	适用于: Flow Cyt (Intra), WB, IP
种属反应性	与反应: Mouse, Rat, Human
免疫原	Synthetic peptide. This information is proprietary to Abcam and/or its suppliers.
阳性对照	Flow Cyt (intra): HUVEC cells. IP: HUVEC whole cell lysate WB: U-87MG, HEL, HUVEC and C2C12 whole cell lysate.
常规说明	<p>This product is a recombinant monoclonal antibody, which offers several advantages including:</p> <ul style="list-style-type: none"><li>- High batch-to-batch consistency and reproducibility</li><li>- Improved sensitivity and specificity</li><li>- Long-term security of supply</li><li>- Animal-free production</li></ul> <p>For more information <a href="#">see here</a>.</p> <p>Our RabMAb<sup>®</sup> technology is a patented hybridoma-based technology for making rabbit monoclonal antibodies. For details on our patents, please refer to <a href="#">RabMAb<sup>®</sup> patents</a>.</p>
性能	
形式	Liquid
存放说明	Shipped at 4°C. Store at -20°C. Stable for 12 months at -20°C.
存储溶液	<p>pH: 7.20</p> <p>Preservative: 0.01% Sodium azide</p> <p>Constituents: 0.05% BSA, 40% Glycerol (glycerin, glycerine), 59% PBS</p>
纯度	Protein A purified
克隆	单克隆
克隆编号	EPR2342
同种型	IgG

应用

**The Abpromise guarantee**      **Abpromise™**承诺保证使用ab119992于以下的经测试应用

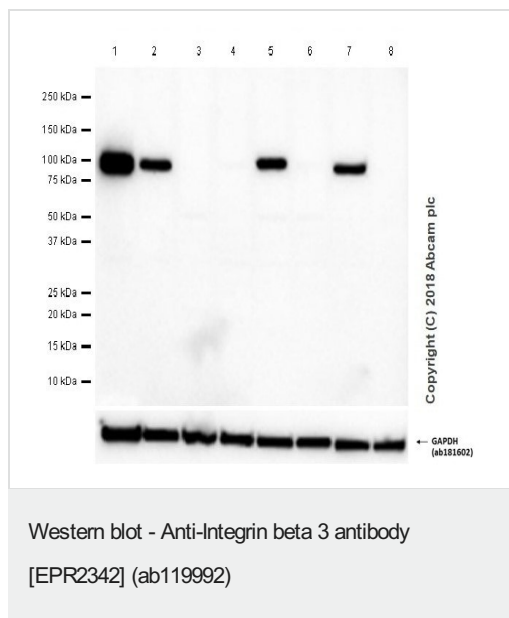
“应用说明”部分 下显示的仅为推荐的起始稀释度;实际最佳的稀释度/浓度应由使用者检定。

应用	Ab评论	说明
Flow Cyt (Intra)		1/20.
WB		1/1000. Detects a band of approximately 110 kDa (predicted molecular weight: 87 kDa).
IP		1/20.

靶标

功能	Integrin alpha-V/beta-3 is a receptor for cytotactin, fibronectin, laminin, matrix metalloproteinase-2, osteopontin, osteomodulin, prothrombin, thrombospondin, vitronectin and von Willebrand factor. Integrin alpha-IIb/beta-3 is a receptor for fibronectin, fibrinogen, plasminogen, prothrombin, thrombospondin and vitronectin. Integrins alpha-IIb/beta-3 and alpha-V/beta-3 recognize the sequence R-G-D in a wide array of ligands. Integrin alpha-IIb/beta-3 recognizes the sequence H-H-L-G-G-G-A-K-Q-A-G-D-V in fibrinogen gamma chain. Following activation integrin alpha-IIb/beta-3 brings about platelet/platelet interaction through binding of soluble fibrinogen. This step leads to rapid platelet aggregation which physically plugs ruptured endothelial surface. In case of HIV-1 infection, the interaction with extracellular viral Tat protein seems to enhance angiogenesis in Kaposi's sarcoma lesions.
组织特异性	Isoform beta-3A and isoform beta-3C are widely expressed. Isoform beta-3A is specifically expressed in osteoblast cells; isoform beta-3C is specifically expressed in prostate and testis.
疾病相关	Defects in ITGB3 are a cause of Glanzmann thrombasthenia (GT) [MIM:273800]; also known as thrombasthenia of Glanzmann and Naegeli. GT is the most common inherited disease of platelets. It is an autosomal recessive disorder characterized by mucocutaneous bleeding of mild-to-moderate severity and the inability of this integrin to recognize macromolecular or synthetic peptide ligands. GT has been classified clinically into types I and II. In type I, platelets show absence of the glycoprotein IIb/beta-3 complexes at their surface and lack fibrinogen and clot retraction capability. In type II, the platelets express the glycoprotein IIb/beta-3 complex at reduced levels (5-20% controls), have detectable amounts of fibrinogen, and have low or moderate clot retraction capability. The platelets of GT 'variants' have normal or near normal (60-100%) expression of dysfunctional receptors.
序列相似性	Belongs to the integrin beta chain family. Contains 1 VWFA domain.
翻译后修饰	Phosphorylated on tyrosine residues in response to thrombin-induced platelet aggregation. Probably involved in outside-in signaling. A peptide (AA 740-762) is capable of binding GRB2 only when both Tyr-773 and Tyr-785 are phosphorylated. Phosphorylation of Thr-779 inhibits SHC binding.
细胞定位	Membrane.

图片



**All lanes :** Anti-Integrin beta 3 antibody [EPR2342] (ab119992) at 1/1000 dilution

**Lane 1 :** U-87MG (Human glioblastoma-astrocytoma epithelial cell) whole cell lysate

**Lane 2 :** HEL (Human Erythroleukemia erythroblast) whole cell lysate

**Lane 3 :** LnCaP (Human prostate carcinoma epithelial cell) whole cell lysate

**Lane 4 :** HeLa (Human cervix adenocarcinoma epithelial cell) whole cell lysate

**Lane 5 :** HUVEC (Human umbilical vein endothelial cell) whole cell lysate

**Lane 6 :** PC-3 (Human prostate adenocarcinoma epithelial cell) whole cell lysate

**Lane 7 :** C2C12 (Mouse myoblasts myoblast) whole cell lysate

**Lane 8 :** Raw264.7 (Mouse Abelson murine leukemia virus-induced tumor macrophage) whole cell lysate

Lysates/proteins at 20 µg per lane.

## Secondary

**All lanes :** Goat Anti-Rabbit IgG H&L (HRP) ([ab97051](#)) at 1/20000 dilution

**Predicted band size:** 87 kDa

**Observed band size:** 110 kDa

**Exposure time:** 40 seconds

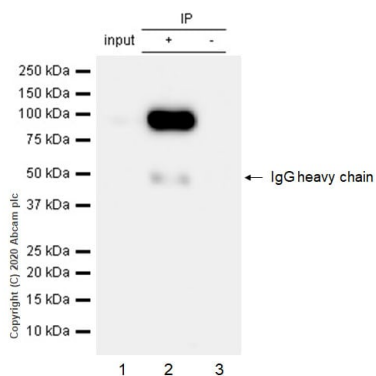
**Blocking buffer and concentration:** 5% NFDM/TBST.

**Diluting buffer and concentration:** 5% NFDM/TBST.

[ab181602](#) was used as a loading control.

LnCaP, HeLa and PC-3 are low expression cell lines ( PMID: 21867506, PMID: 25248000).

Though there are publications stating expression of Integrin beta 3 in RAW264.7, ab119992 and [ab179473](#) show negative in Raw264.7.



Immunoprecipitation - Anti-Integrin beta 3 antibody  
[EPR2342] (ab119992)

Purified ab119992 at 1:20 dilution (0.7 µg) immunoprecipitating Integrin beta 3 in HUVEC whole cell lysate.

Lane 1 (input): HUVEC (Human umbilical vein endothelial cell) whole cell lysate 10 µg.

Lane 2 (+): ab119992 + HUVEC whole cell lysate.

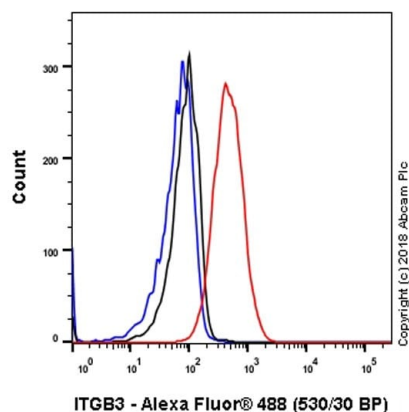
Lane 3 (-): Rabbit monoclonal IgG (**ab172730**) instead of ab119992 in HUVEC whole cell lysate.

VeriBlot for IP Detection Reagent (HRP)(**ab131366**) (1:1000 dilution) was used for Western blotting.

Blocking Buffer and concentration: 5% NFDM/TBST.

Diluting buffer and concentration: 5% NFDM/TBST.

Observed band size: 110 kDa



Flow Cytometry (Intracellular) - Anti-Integrin beta 3  
antibody [EPR2342] (ab119992)

Intracellular flow cytometric analysis of 4% paraformaldehyde-fixed, 90% methanol permeabilized HUVEC (Human umbilical vein endothelial cell) cell line labeling Integrin beta 3 with ab119992 at 1/20 (red) compared with a Rabbit monoclonal IgG (**ab172730**) (black) and an unlabeled control (cells without incubation with primary antibody and secondary antibody) (blue). Goat anti rabbit IgG (Alexa Fluor® 488, **ab150077**), at 1/2000 dilution was used as the secondary antibody.

### Why choose a recombinant antibody?



**Research with confidence**  
Consistent and reproducible results



**Long-term and scalable supply**  
Recombinant technology



**Success from the first experiment**  
Confirmed specificity



**Ethical standards compliant**  
Animal-free production

Anti-Integrin beta 3 antibody [EPR2342] (ab119992)

**Please note:** All products are "FOR RESEARCH USE ONLY. NOT FOR USE IN DIAGNOSTIC PROCEDURES"

### Our Abpromise to you: Quality guaranteed and expert technical support

---

- Replacement or refund for products not performing as stated on the datasheet
- Valid for 12 months from date of delivery
- Response to your inquiry within 24 hours
- We provide support in Chinese, English, French, German, Japanese and Spanish
- Extensive multi-media technical resources to help you
- We investigate all quality concerns to ensure our products perform to the highest standards

If the product does not perform as described on this datasheet, we will offer a refund or replacement. For full details of the Abpromise, please visit <https://www.abcam.cn/abpromise> or contact our technical team.

### Terms and conditions

---

- Guarantee only valid for products bought direct from Abcam or one of our authorized distributors