



### Anti-Integrin beta 1d antibody [2B1] ab8991

**8 References**   **2 图像**

#### 概述

<b>产品名称</b>	Anti-Integrin beta 1d抗体[2B1]
<b>描述</b>	小鼠单克隆抗体[2B1] to Integrin beta 1d
<b>宿主</b>	Mouse
<b>特异性</b>	Recognizes specifically the cytoplasmic domain of integrin subunit beta 1D present in cardiac and skeletal muscle.  A broad species reactivity is expected because of the conserved nature of the epitope.
<b>经测试应用</b>	<b>适用于:</b> WB, IHC
<b>种属反应性</b>	<b>与反应:</b> Human
<b>免疫原</b>	Synthetic peptide corresponding to Integrin beta 1d. The immunogen corresponds to the C-terminal 24 amino acids of integrin $\beta$ 1D including an appending N-terminal cysteine ( CQENPIYKS-PINNFKNPNYGRKAGL ) coupled to keyhole limpet hemocyanin. Database link: <a href="#">P05556</a>  <a href="#">Run BLAST with</a>  <a href="#">Run BLAST with</a>
<b>表位</b>	Cytoplasmic domain, C-terminal. Isoform of the Integrin b1 subunit present in cardiac and skeletal muscle.
<b>阳性对照</b>	WB: Human heart, tongue and skeletal muscle tissue lysates. IHC: Human myocardium.
<b>常规说明</b>	<p>The integrins, finally, form a large family of glycosylated transmembrane proteins that act as dimers of an alpha and a beta subunit in interconnecting the cytoskeleton and the extracellular matrix.</p> <p>The Life Science industry has been in the grips of a reproducibility crisis for a number of years. Abcam is leading the way in addressing this with our range of recombinant monoclonal antibodies and knockout edited cell lines for gold-standard validation. Please check that this product meets your needs before purchasing.</p> <p>If you have any questions, special requirements or concerns, please send us an inquiry and/or contact our Support team ahead of purchase. Recommended alternatives for this product can be found below, along with publications, customer reviews and Q&amp;As</p>

#### 性能

<b>形式</b>	Liquid
<b>存放说明</b>	Shipped at 4°C. Store at +4°C short term (1-2 weeks). Upon delivery aliquot. Store at -20°C or -80°C. Avoid freeze / thaw cycle.
<b>存储溶液</b>	Preservative: 0.09% Sodium azide Constituent: PBS
<b>纯度</b>	Protein G purified
<b>Primary antibody说明</b>	The integrins, finally, form a large family of glycosylated transmembrane proteins that act as dimers of an alpha and a beta subunit in interconnecting the cytoskeleton and the extracellular matrix.
<b>克隆</b>	单克隆
<b>克隆编号</b>	2B1
<b>骨髓瘤</b>	Sp2/0
<b>同种型</b>	IgG1
<b>轻链类型</b>	kappa

## 应用

**The Abpromise guarantee**      **Abpromise™**承诺保证使用ab8991于以下的经测试应用

“应用说明”部分 下显示的仅为推荐的起始稀释度;实际最佳的稀释度/浓度应由使用者检定。

应用	Ab评论	说明
WB		1/100 - 1/1000.
IHC		1/25 - 1/200.

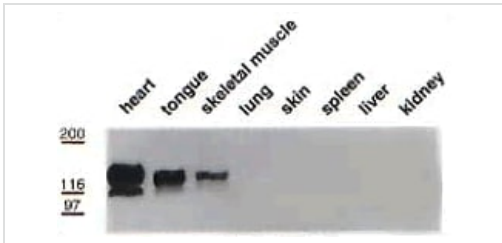
## 靶标

**相关性**

Integrin beta 1, also known as CD29, is a 130 kDa transmembrane glycoprotein that forms noncovalent complexes with various Integrin alpha subunits (including alpha 1, alpha 2, alpha 3, alpha 4, alpha 5, and alpha 6, also known as CD49a, CD49b, CD49c, CD49d, CD49e, and CD49f, respectively) to form the functional receptors that bind to specific extracellular matrix proteins. Integrin receptors are involved in the regulation of a variety of important biological functions, including embryonic development, wound repair, hemostasis, and prevention of programmed cell death. They are also implicated in abnormal pathological states such as tumor directed angiogenesis, tumor cell growth, and metastasis. These heterodimeric receptors bridge the cytoplasmic actin cytoskeleton with proteins present in the extracellular matrix and/or on adjacent cells. The clustering of integrins on a cell surface leads to the formation of focal contacts. Interactions between integrins and the extracellular matrix lead to activation of signal transduction pathways and regulation of gene expression. The isoform beta-1D of Integrin 1, is expressed specifically in striated muscle (skeletal and cardiac muscle).

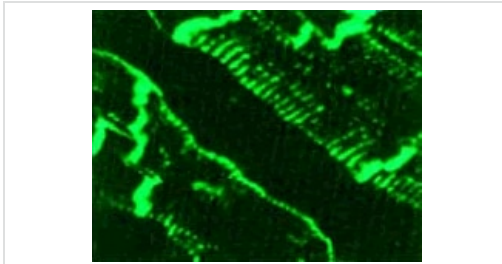
**细胞定位**      Cell Membrane

## 图片



Western blotting of beta1D integrin showing its muscle cell specific expression pattern.

Western blot - Anti-Integrin beta 1d antibody [2B1] (ab8991)



Immunohistochemistry (Immunofluorescence) staining of Human myocardium for beta1D integrin.

Immunohistochemistry - Anti-Integrin beta 1d antibody [2B1] (ab8991)

**Please note:** All products are "FOR RESEARCH USE ONLY. NOT FOR USE IN DIAGNOSTIC PROCEDURES"

### Our Abpromise to you: Quality guaranteed and expert technical support

- Replacement or refund for products not performing as stated on the datasheet
- Valid for 12 months from date of delivery
- Response to your inquiry within 24 hours
- We provide support in Chinese, English, French, German, Japanese and Spanish
- Extensive multi-media technical resources to help you
- We investigate all quality concerns to ensure our products perform to the highest standards

If the product does not perform as described on this datasheet, we will offer a refund or replacement. For full details of the Abpromise, please visit <https://www.abcam.cn/abpromise> or contact our technical team.

### Terms and conditions

- Guarantee only valid for products bought direct from Abcam or one of our authorized distributors