

Anti-Integrin alpha 2 antibody [EPR5789] ab109432

敲除验证 重组 RabMAb

1 References 4 图像

概述

产品名称	Anti-Integrin alpha 2抗体[EPR5789]
描述	兔单克隆抗体[EPR5789] to Integrin alpha 2
宿主	Rabbit
经测试应用	适用于: WB 不适用于: Flow Cyt,IHC-P or IP
种属反应性	与反应: Human
免疫原	Synthetic peptide. This information is proprietary to Abcam and/or its suppliers.
阳性对照	WB: HeLa, HAP1, 293T, T47-D, and A431 cell lysates.
常规说明	<p>This product is a recombinant monoclonal antibody, which offers several advantages including:</p> <ul style="list-style-type: none">- High batch-to-batch consistency and reproducibility- Improved sensitivity and specificity- Long-term security of supply- Animal-free production <p>For more information see here.</p> <p>Our RabMAb[®] technology is a patented hybridoma-based technology for making rabbit monoclonal antibodies. For details on our patents, please refer to RabMAb[®] patents.</p> <p>Mouse, Rat: We have preliminary internal testing data to indicate this antibody may not react with these species. Please contact us for more information.</p>

性能

形式	Liquid
存放说明	Shipped at 4°C. Store at -20°C. Stable for 12 months at -20°C.
存储溶液	pH: 7.20 Preservative: 0.05% Sodium azide Constituents: 0.1% BSA, 40% Glycerol (glycerin, glycerine), 9.85% Tris glycine, 50% Tissue culture supernatant
纯度	Protein A purified
克隆	单克隆

克隆编号EPR5789

同种型IgG

应用

The Abpromise guarantee

Abpromise™承诺保证使用ab109432于以下的经测试应用

“应用说明”部分 下显示的仅为推荐的起始稀释度;实际最佳的稀释度/浓度应由使用者检定。

应用	Ab评论	说明
WB		1/1000 - 1/10000. Predicted molecular weight: 129 kDa.

应用说明

Is unsuitable for Flow Cyt, IHC-P or IP.

靶标

功能

Integrin alpha-2/beta-1 is a receptor for laminin, collagen, collagen C-propeptides, fibronectin and E-cadherin. It recognizes the proline-hydroxylated sequence G-F-P-G-E-R in collagen. It is responsible for adhesion of platelets and other cells to collagens, modulation of collagen and collagenase gene expression, force generation and organization of newly synthesized extracellular matrix.

序列相似性

Belongs to the integrin alpha chain family.
Contains 7 FG-GAP repeats.
Contains 1 VWFA domain.

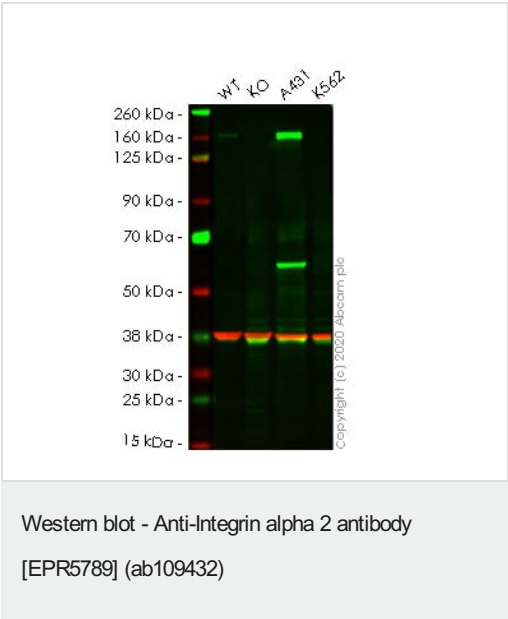
结构域

The integrin I-domain (insert) is a VWFA domain. Integrins with I-domains do not undergo protease cleavage.

细胞定位

Membrane.

图片



All lanes : Anti-Integrin alpha 2 antibody [EPR5789] (ab109432) at 1/1000 dilution

- Lane 1 : Wild-type HeLa cell lysate
- Lane 2 : ITGA2 knockout HeLa cell lysate
- Lane 3 : A431 cell lysate
- Lane 4 : K562 cell lysate

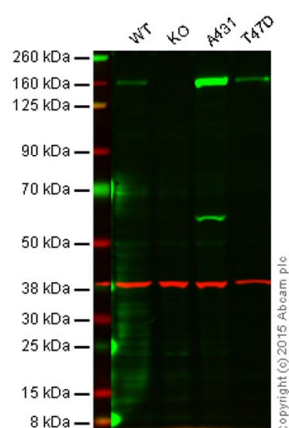
Lysates/proteins at 20 µg per lane.

Performed under reducing conditions.

Predicted band size: 129 kDa
Observed band size: 129 kDa

Lanes 1-4: Merged signal (red and green). Green - ab109432 observed at 129 kDa. Red - loading control **ab8245** observed at 37 kDa.

ab109432 Anti-Integrin alpha 2 antibody [EPR5789] was shown to specifically react with Integrin alpha 2 in wild-type HeLa cells. Loss of signal was observed when knockout cell line **ab264819** (knockout cell lysate **ab257262**) was used. Wild-type and Integrin alpha 2 knockout samples were subjected to SDS-PAGE. ab109432 and Anti-GAPDH antibody [6C5] - Loading Control (**ab8245**) were incubated overnight at 4°C at 1 in 1000 Dilution and 1 in 20000 dilution respectively. Blots were developed with Goat anti-Rabbit IgG H&L (IRDye® 800CW) preadsorbed (**ab216773**) and Goat anti-Mouse IgG H&L (IRDye® 680RD) preadsorbed (**ab216776**) secondary antibodies at 1 in 20000 dilution for 1 hour at room temperature before imaging.



Western blot - Anti-Integrin alpha 2 antibody [EPR5789] (ab109432)

All lanes : Anti-Integrin alpha 2 antibody [EPR5789] (ab109432) at 1/1000 dilution

Lane 1 : Wild-type HAP1 cell lysate

Lane 2 : Integrin alpha 2 knockout HAP1 cell lysate

Lane 3 : A431 cell lysate

Lane 4 : T47D cell lysate

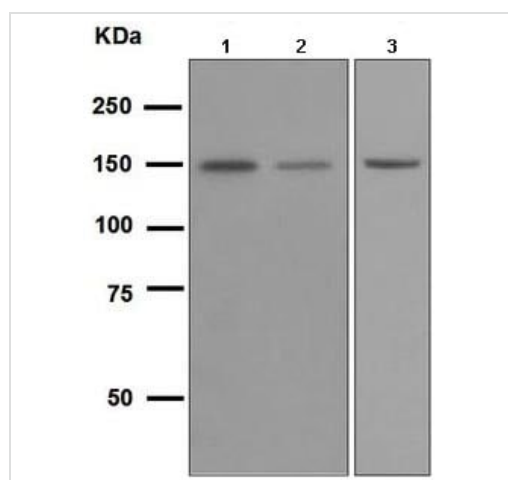
Lysates/proteins at 20 µg per lane.

Predicted band size: 129 kDa

Lanes 1 - 4: Merged signal (red and green). Green - ab109432 observed at 165 kDa. Red - loading control, **ab8245**, observed at 37 kDa.

ab109432 was shown to specifically react with Integrin alpha 2 when Integrin alpha 2 knockout samples were used. Wild-type and Integrin alpha 2 knockout samples were subjected to SDS-PAGE. ab109432 and **ab8245** (loading control to GAPDH) were diluted 1/1000 and 1/2000 respectively and incubated overnight at 4°C. Blots were developed with Goat anti-Rabbit IgG H&L (IRDye®

800CW) preadsorbed **ab216773** and Goat anti-Mouse IgG H&L (IRDye® 680RD) preadsorbed **ab216776** secondary antibodies at 1/10 000 dilution for 1 h at room temperature before imaging.



Western blot - Anti-Integrin alpha 2 antibody [EPR5789] (ab109432)

All lanes : Anti-Integrin alpha 2 antibody [EPR5789] (ab109432) at 1/1000 dilution

Lane 1 : 293T cell lysate

Lane 2 : T47-D cell lysate

Lane 3 : A431 cell lysate

Lysates/proteins at 10 µg per lane.

Predicted band size: 129 kDa

Why choose a recombinant antibody?

Research with confidence
Consistent and reproducible results

Long-term and scalable supply
Recombinant technology

Success from the first experiment
Confirmed specificity

Ethical standards compliant
Animal-free production

Anti-Integrin alpha 2 antibody [EPR5789] (ab109432)

Please note: All products are "FOR RESEARCH USE ONLY. NOT FOR USE IN DIAGNOSTIC PROCEDURES"

Our Abpromise to you: Quality guaranteed and expert technical support

- Replacement or refund for products not performing as stated on the datasheet
- Valid for 12 months from date of delivery
- Response to your inquiry within 24 hours
- We provide support in Chinese, English, French, German, Japanese and Spanish
- Extensive multi-media technical resources to help you
- We investigate all quality concerns to ensure our products perform to the highest standards

If the product does not perform as described on this datasheet, we will offer a refund or replacement. For full details of the Abpromise, please visit <https://www.abcam.cn/abpromise> or contact our technical team.

Terms and conditions

- Guarantee only valid for products bought direct from Abcam or one of our authorized distributors