

Anti-Int1 antibody ab121692

2 图像

概述

产品名称	Anti-Int1 抗体
描述	兔多克隆抗体 to Int1
宿主	Rabbit
经测试应用	适用于: WB, IHC-P
种属反应性	与反应: Human
免疫原	Recombinant fragment corresponding to Human Int1 aa 289-379. Sequence: L TEEEDSQTELLIAEEKLSPEQEGQLMPRYEELAESVVEEYVL DMLRDQLN RRQPIDNVSRLRLRLTSTCGYKEVRL LAVQKLEMWLNPK Run BLAST with Run BLAST with
阳性对照	IHC: Human thyroid gland tissue WB: Human cell line RT-4 and human cell line U-251 MG.
常规说明	<p>The Life Science industry has been in the grips of a reproducibility crisis for a number of years. Abcam is leading the way in addressing this with our range of recombinant monoclonal antibodies and knockout edited cell lines for gold-standard validation. Please check that this product meets your needs before purchasing.</p> <p>If you have any questions, special requirements or concerns, please send us an inquiry and/or contact our Support team ahead of purchase. Recommended alternatives for this product can be found below, along with publications, customer reviews and Q&As</p>

性能

形式	Liquid
存放说明	Shipped at 4°C. Upon delivery aliquot and store at -20°C. Avoid repeated freeze / thaw cycles.
存储溶液	pH: 7.20 Preservative: 0.02% Sodium azide Constituents: 59% PBS, 40% Glycerol (glycerin, glycerine)
纯度	Immunogen affinity purified
克隆	多克隆
同种型	IgG

应用

The Abpromise guarantee

Abpromise™承诺保证使用ab121692于以下的经测试应用

“应用说明”部分 下显示的仅为推荐的起始稀释度;实际最佳的稀释度/浓度应由使用者检定。

应用	Ab评论	说明
WB		Use a concentration of 0.04 - 0.4 µg/ml. Predicted molecular weight: 244 kDa.
IHC-P		1/900. Perform heat mediated antigen retrieval via the pressure cooker method before commencing with IHC staining protocol. Use buffer at pH 6 for antigen retrieval.

靶标

功能

Component of the Integrator complex, a complex involved in the small nuclear RNAs (snRNA) U1 and U2 transcription and in their 3'-box-dependent processing. The Integrator complex is associated with the C-terminal domain (CTD) of RNA polymerase II largest subunit (POLR2A) and is recruited to the U1 and U2 snRNAs genes.

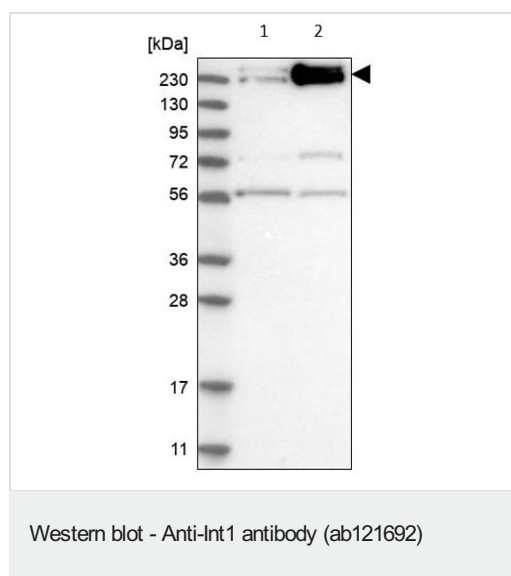
序列相似性

Belongs to the Integrator subunit 1 family.

细胞定位

Nucleus membrane.

图片

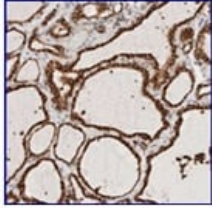


All lanes : Anti-Int1 antibody (ab121692) at 0.4 µg/ml

Lane 1 : Human cell line RT-4

Lane 2 : Human cell line U-251 MG

Predicted band size: 244 kDa



Immunohistochemical staining of paraffin embedded Human thyroid gland tissue, using 1/900 ab121692.

Immunohistochemistry (Formalin/PFA-fixed paraffin-embedded sections) - Anti-Int1 antibody (ab121692)

Please note: All products are "FOR RESEARCH USE ONLY. NOT FOR USE IN DIAGNOSTIC PROCEDURES"

Our Abpromise to you: Quality guaranteed and expert technical support

- Replacement or refund for products not performing as stated on the datasheet
- Valid for 12 months from date of delivery
- Response to your inquiry within 24 hours
- We provide support in Chinese, English, French, German, Japanese and Spanish
- Extensive multi-media technical resources to help you
- We investigate all quality concerns to ensure our products perform to the highest standards

If the product does not perform as described on this datasheet, we will offer a refund or replacement. For full details of the Abpromise, please visit <https://www.abcam.cn/abpromise> or contact our technical team.

Terms and conditions

- Guarantee only valid for products bought direct from Abcam or one of our authorized distributors