

Anti-Insulin antibody [K36aC10] ab6995

★★★★★ [9 Abreviews](#) [76 References](#) [1 图像](#)

概述

产品名称	Anti-Insulin抗体[K36aC10]
描述	小鼠单克隆抗体[K36aC10] to Insulin
宿主	Mouse
特异性	The antibody exhibits cross-reactivity with human proinsulin. This antibody recognizes purified insulin from the pancreas of human, bovine, horse, sheep, and proinsulin from human. Cross reaction has been observed with insulin containing cells in fixed sections of pancreas from human, porcine, dog, rabbit, bovine, sheep, rat, guinea pig and cat.
经测试应用	适用于: IHC-P
种属反应性	与反应: Human
免疫原	Human insulin.
阳性对照	IHC: Pancreas tissue
常规说明	<p>The Life Science industry has been in the grips of a reproducibility crisis for a number of years. Abcam is leading the way in addressing this with our range of recombinant monoclonal antibodies and knockout edited cell lines for gold-standard validation. Please check that this product meets your needs before purchasing.</p> <p>If you have any questions, special requirements or concerns, please send us an inquiry and/or contact our Support team ahead of purchase. Recommended alternatives for this product can be found below, along with publications, customer reviews and Q&As</p>

性能

形式	Liquid
存放说明	Shipped at 4°C. Store at +4°C short term (1-2 weeks). Upon delivery aliquot. Store at -20°C long term. Avoid freeze / thaw cycle.
存储溶液	<p>pH: 7.30</p> <p>Preservative: 0.05% Sodium azide</p> <p>Constituents: PBS, BSA</p>
纯度	Ascites
纯化说明	Ascites diluted in a PBS-based diluent.
克隆	单克隆

克隆编号	K36aC10
同种型	IgG1

应用

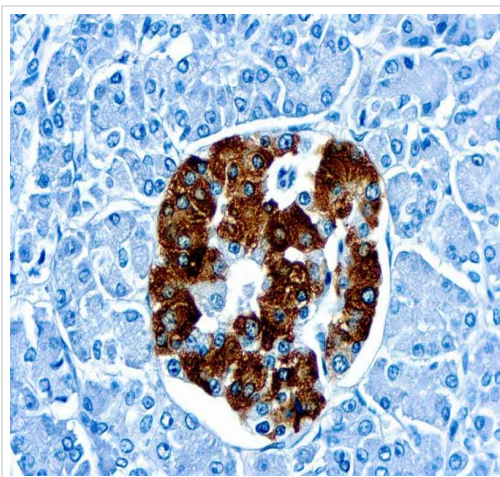
The Abpromise guarantee **Abpromise™**承诺保证使用ab6995于以下的经测试应用
“应用说明”部分 下显示的仅为推荐的起始稀释度;实际最佳的稀释度/浓度应由使用者检定。

应用	Ab评论	说明
IHC-P	★★★★★ (5)	1/25 - 1/50.

靶标

功能	Insulin decreases blood glucose concentration. It increases cell permeability to monosaccharides, amino acids and fatty acids. It accelerates glycolysis, the pentose phosphate cycle, and glycogen synthesis in liver.
疾病相关	<p>Defects in INS are the cause of familial hyperproinsulinemia (FHPRI) [MIM:176730].</p> <p>Defects in INS are a cause of diabetes mellitus insulin-dependent type 2 (IDDM2) [MIM:125852]. IDDM2 is a multifactorial disorder of glucose homeostasis that is characterized by susceptibility to ketoacidosis in the absence of insulin therapy. Clinical fetaures are polydipsia, polyphagia and polyuria which result from hyperglycemia-induced osmotic diuresis and secondary thirst. These derangements result in long-term complications that affect the eyes, kidneys, nerves, and blood vessels.</p> <p>Defects in INS are a cause of diabetes mellitus permanent neonatal (PNDM) [MIM:606176]. PNDM is a rare form of diabetes distinct from childhood-onset autoimmune diabetes mellitus type 1. It is characterized by insulin-requiring hyperglycemia that is diagnosed within the first months of life. Permanent neonatal diabetes requires lifelong therapy.</p> <p>Defects in INS are a cause of maturity-onset diabetes of the young type 10 (MODY10) [MIM:613370]. MODY10 is a form of diabetes that is characterized by an autosomal dominant mode of inheritance, onset in childhood or early adulthood (usually before 25 years of age), a primary defect in insulin secretion and frequent insulin-independence at the beginning of the disease.</p>
序列相似性	Belongs to the insulin family.
细胞定位	Secreted.

图片



Immunohistochemistry (Formalin/PFA-fixed paraffin-embedded sections) analysis of human pancreas tissue labelling insulin with ab6995 at 1/25 dilution.

Immunohistochemistry (Formalin/PFA-fixed paraffin-embedded sections) - Anti-Insulin antibody [K36aC10] (ab6995)

Please note: All products are "FOR RESEARCH USE ONLY. NOT FOR USE IN DIAGNOSTIC PROCEDURES"

Our Abpromise to you: Quality guaranteed and expert technical support

- Replacement or refund for products not performing as stated on the datasheet
- Valid for 12 months from date of delivery
- Response to your inquiry within 24 hours
- We provide support in Chinese, English, French, German, Japanese and Spanish
- Extensive multi-media technical resources to help you
- We investigate all quality concerns to ensure our products perform to the highest standards

If the product does not perform as described on this datasheet, we will offer a refund or replacement. For full details of the Abpromise, please visit <https://www.abcam.cn/abpromise> or contact our technical team.

Terms and conditions

- Guarantee only valid for products bought direct from Abcam or one of our authorized distributors