

# Anti-Inhibin beta A antibody ab97705

[8 References](#) [2 图像](#)

### 概述

产品名称	Anti-Inhibin beta A抗体
描述	兔多克隆抗体to Inhibin beta A
宿主	Rabbit
经测试应用	适用于: WB, ICC/IF
种属反应性	与反应: Human
免疫原	Synthetic peptide, corresponding to a sequence within amino acids 362-423 (SGSSLSFHST VINHYRMRGH SPFANLKSCC VPTKLRPMSM LYYDDGQNI KDKIQNMIVE EC) of Human Inhibin beta A (NP_002183). <a href="#">Run BLAST with ExpASY</a> <a href="#">Run BLAST with NCBI</a>
阳性对照	H1299, HeLa S3 and HepG2 whole cell lysate ( <a href="#">ab7900</a> ); HeLa cells; 293T, A431, MOLT4 and Raji cell lines.
常规说明	<p>The Life Science industry has been in the grips of a reproducibility crisis for a number of years. Abcam is leading the way in addressing this with our range of recombinant monoclonal antibodies and knockout edited cell lines for gold-standard validation. Please check that this product meets your needs before purchasing.</p> <p>If you have any questions, special requirements or concerns, please send us an inquiry and/or contact our Support team ahead of purchase. Recommended alternatives for this product can be found below, along with publications, customer reviews and Q&amp;As</p>

### 性能

形式	Liquid
存放说明	Shipped at 4°C. Upon delivery aliquot. Store at -20°C or -80°C. Avoid freeze / thaw cycle.
存储溶液	pH: 7.00 Preservative: 0.025% Proclin 300 Constituents: 79% PBS, 20% Glycerol (glycerin, glycerine)
纯度	Immunogen affinity purified
克隆	多克隆
同种型	IgG

## 应用

**The Abpromise guarantee**      **Abpromise™**承诺保证使用ab97705于以下的经测试应用

“应用说明”部分 下显示的仅为推荐的起始稀释度;实际最佳的稀释度/浓度应由使用者检定。

应用	Ab评论	说明
WB		1/500 - 1/3000. Predicted molecular weight: 47 kDa.
ICC/IF		1/100 - 1/200.

## 靶标

### 功能

Inhibins and activins inhibit and activate, respectively, the secretion of follitropin by the pituitary gland. Inhibins/activins are involved in regulating a number of diverse functions such as hypothalamic and pituitary hormone secretion, gonadal hormone secretion, germ cell development and maturation, erythroid differentiation, insulin secretion, nerve cell survival, embryonic axial development or bone growth, depending on their subunit composition. Inhibins appear to oppose the functions of activins.

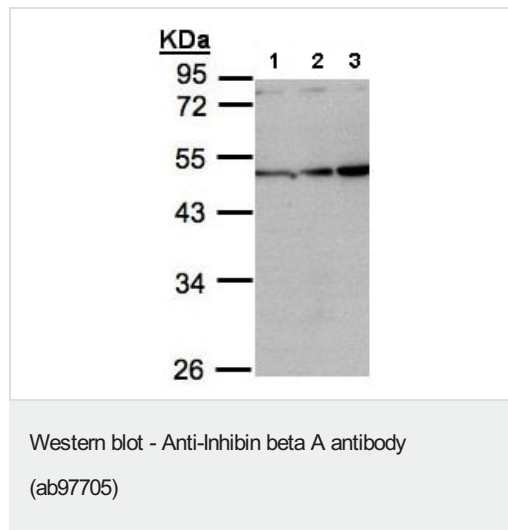
### 序列相似性

Belongs to the TGF-beta family.

### 细胞定位

Secreted.

## 图片



**All lanes** : Anti-Inhibin beta A antibody (ab97705) at 1/1000 dilution

**Lane 1** : H1299 whole cell lysate

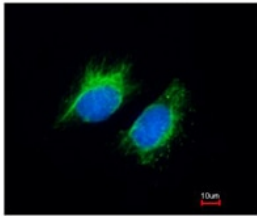
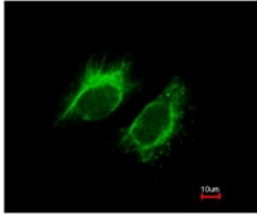
**Lane 2** : HeLa S3 whole cell lysate

**Lane 3** : HepG2 whole cell lysate

Lysates/proteins at 30 µg per lane.

**Predicted band size:** 47 kDa

10% SDS-PAGE.



ab97705, at 1/200 dilution, staining Inhibin beta A in paraformaldehyde-fixed HeLa cells by Immunofluorescence. Lower image is merged with DNA probe.

Immunocytochemistry/ Immunofluorescence - Anti-Inhibin beta A antibody (ab97705)

**Please note:** All products are "FOR RESEARCH USE ONLY. NOT FOR USE IN DIAGNOSTIC PROCEDURES"

### Our Abpromise to you: Quality guaranteed and expert technical support

---

- Replacement or refund for products not performing as stated on the datasheet
- Valid for 12 months from date of delivery
- Response to your inquiry within 24 hours
- We provide support in Chinese, English, French, German, Japanese and Spanish
- Extensive multi-media technical resources to help you
- We investigate all quality concerns to ensure our products perform to the highest standards

If the product does not perform as described on this datasheet, we will offer a refund or replacement. For full details of the Abpromise, please visit <https://www.abcam.cn/abpromise> or contact our technical team.

### Terms and conditions

---

- Guarantee only valid for products bought direct from Abcam or one of our authorized distributors