



### Anti-Inhibin alpha antibody [R1] ab14087

★★★★★ [1 Abreviews](#) [5 References](#) [8 图像](#)

#### 概述

产品名称	Anti-Inhibin alpha抗体[R1]
描述	小鼠单克隆抗体[R1] to Inhibin alpha
宿主	Mouse
经测试应用	适用于: IHC-P
种属反应性	与反应: Human
免疫原	<p>Synthetic peptide corresponding to Human Inhibin alpha aa 233-264. Note that this peptide corresponds to the N-terminus of the mature region of the human inhibin alpha subunit.</p> <p>Sequence:</p> <p>STPLMSWPWSPSALRLLQRPPEEPAAHANCHR</p> <p>Database link: <a href="#">P05111</a></p> <p> <a href="#">Run BLAST with</a>  <a href="#">Run BLAST with</a></p>
阳性对照	human ovary, testis, placenta
常规说明	<p>Inhibin alpha is expressed in a range of tissues including prostate, brain, adrenal gland, testis and ovary. The antibody may be of value in the differentiation of adrenocortical tumours, placental and gestational trophoblastic lesions and sex cord stromal tumours.</p> <p>The Life Science industry has been in the grips of a reproducibility crisis for a number of years. Abcam is leading the way in addressing this with our range of recombinant monoclonal antibodies and knockout edited cell lines for gold-standard validation. Please check that this product meets your needs before purchasing.</p> <p>If you have any questions, special requirements or concerns, please send us an inquiry and/or contact our Support team ahead of purchase. Recommended alternatives for this product can be found below, along with publications, customer reviews and Q&amp;As</p>

#### 性能

形式	Liquid
存放说明	Shipped at 4°C. Store at +4°C short term (1-2 weeks). Upon delivery aliquot. Store at -20°C or -80°C. Avoid freeze / thaw cycle.
存储溶液	<p>Preservative: 0.08% Sodium azide</p> <p>Constituent: Tissue culture supernatant</p>

纯度	Tissue culture supernatant
Primary antibody说明	Inhibin alpha is expressed in a range of tissues including prostate, brain, adrenal gland, testis and ovary. The antibody may be of value in the differentiation of adrenocortical tumours, placental and gestational trophoblastic lesions and sex cord stromal tumours.
克隆	单克隆
克隆编号	R1
同种型	IgG2a

应用

The Abpromise guarantee      **Abpromise™**承诺保证使用ab14087于以下的经测试应用

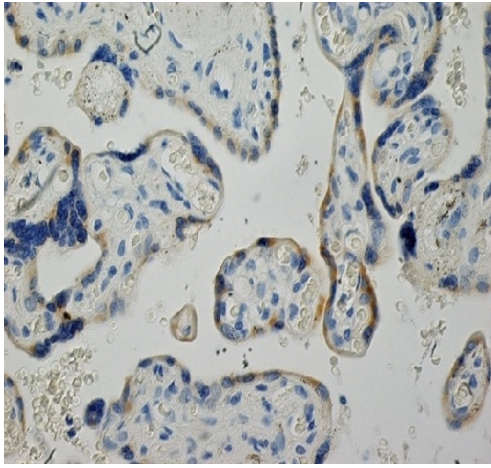
“应用说明”部分 下显示的仅为推荐的起始稀释度;实际最佳的稀释度/浓度应由使用者检定。

应用	Ab评论	说明
IHC-P	★★★★★ (1)	1/1 - 1/50. Perform heat mediated antigen retrieval before commencing with IHC staining protocol. Neat - 1/1/50. Sodium citrate pH 6.0 is recommended for antigen retrieval.

靶标

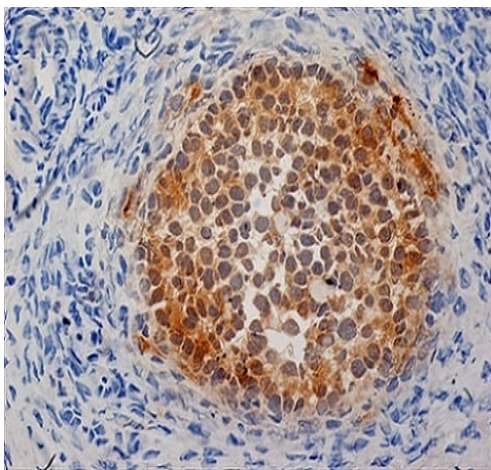
功能	Inhibins and activins inhibit and activate, respectively, the secretion of follitropin by the pituitary gland. Inhibins/activins are involved in regulating a number of diverse functions such as hypothalamic and pituitary hormone secretion, gonadal hormone secretion, germ cell development and maturation, erythroid differentiation, insulin secretion, nerve cell survival, embryonic axial development or bone growth, depending on their subunit composition. Inhibins appear to oppose the functions of activins.
组织特异性	Originally found in ovary (granulosa cells) and testis (Sertoli cells), but widely distributed in many tissues including brain and placenta. In adrenal cortex expression is limited to the zona reticularis and the innermost zona fasciculata in the normal gland, extending centripetally into the zona fasciculata in hyperplasia. Also found in adrenocortical tumors. Also expressed in prostate epithelium of benign prostatic hyperplasia, in regions of basal cell hyperplasia and in nonmalignant regions of high grade prostate cancer. Only circulating inhibin B is found in male, whereas circulating inhibins A and B are found in female.
序列相似性	Belongs to the TGF-beta family.
翻译后修饰	Proteolytic processing yields a number of bioactive forms. The 20/23 kDa forms consist solely of the mature alpha chain, the 26/29 kDa forms consist of the most N-terminal propeptide linked through a disulfide bond to the mature alpha chain, the 50/53 kDa forms encompass the entire proprotein. Each type can be furthermore either mono- or diglycosylated, causing the mass difference.
细胞定位	Secreted.

图片



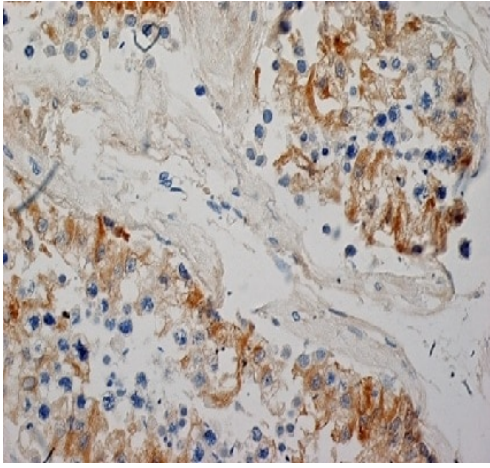
Immunohistochemistry (Formalin/PFA-fixed paraffin-embedded sections) - Anti-Inhibin alpha antibody [R1] (ab14087)

Immunohistochemical analysis of formalin fixed, paraffin embedded human placenta tissue labeling inhibin alpha with ab14087. Following antigen retrieval in Tris/EDTA pH 9.0. Blocking with peroxidase blocking reagent and 10% normal goat serum. Visualization was with DAB substrate and counter-staining with haematoxylin.



Immunohistochemistry (Formalin/PFA-fixed paraffin-embedded sections) - Anti-Inhibin alpha antibody [R1] (ab14087)

Immunohistochemical analysis of paraffin embedded human ovary tissue labeling inhibin alpha with ab14087. Blocking with 0.3%  $H_2O_2$  and 10% normal goat serum. Visualization was with DAB substrate and counter-staining with haematoxylin.

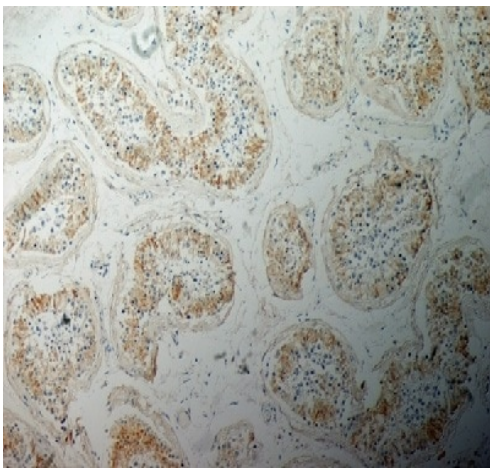


Immunohistochemistry (Formalin/PFA-fixed paraffin-embedded sections) - Anti-Inhibin alpha antibody [R1] (ab14087)

Immunohistochemical analysis of formalin fixed, paraffin embedded human testis tissue labeling inhibin alpha with ab14087. Following antigen retrieval in Tris/EDTA pH 9.0. Blocking with peroxidase blocking reagent and 10% normal goat serum. Visualization was with DAB substrate and counter-staining with haematoxylin.

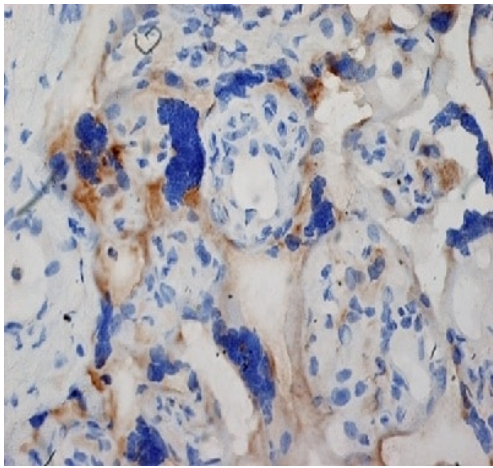
Immunohistochemistry (Formalin/PFA-fixed paraffin-embedded sections) - Anti-Inhibin alpha antibody [R1] (ab14087)

Immunohistochemical analysis of formalin fixed, paraffin embedded human testis tissue (showing sertoli cells, leydig cells and spermatogonia) labeling inhibin alpha with ab14087.



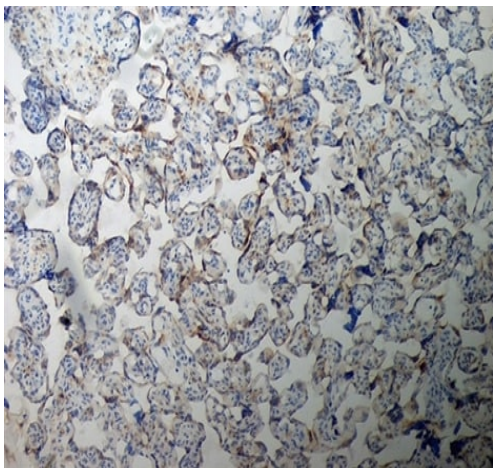
Immunohistochemistry (Formalin/PFA-fixed paraffin-embedded sections) - Anti-Inhibin alpha antibody [R1] (ab14087)

Immunohistochemical analysis of formalin fixed, paraffin embedded human testis tissue labeling inhibin alpha with ab14087. Following antigen retrieval in Tris/EDTA pH 9.0. Blocking with peroxidase blocking reagent and 10% normal goat serum. Visualization was with DAB substrate and counter-staining with haematoxylin.



Immunohistochemistry (Formalin/PFA-fixed paraffin-embedded sections) - Anti-Inhibin alpha antibody [R1] (ab14087)

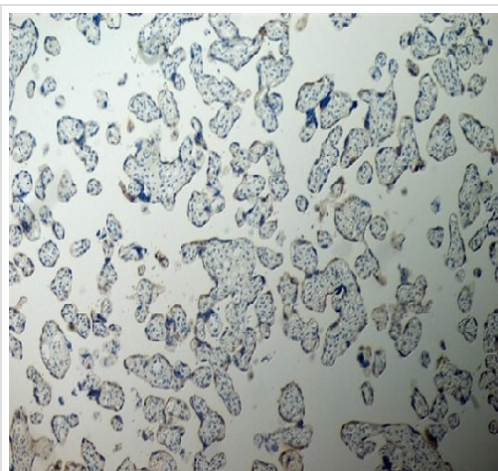
Immunohistochemical analysis of paraffin embedded human placenta tissue labeling inhibin alpha with ab14087. Blocking with 0.3%  $\text{H}_2\text{O}_2$  and 10% normal goat serum. Visualization was with DAB substrate and counter-staining with haematoxylin.



Immunohistochemistry (Formalin/PFA-fixed paraffin-embedded sections) - Anti-Inhibin alpha antibody [R1] (ab14087)

Immunohistochemical analysis of paraffin embedded human placenta tissue labeling inhibin alpha with ab14087. Blocking with 0.3%  $\text{H}_2\text{O}_2$  and 10% normal goat serum. Visualization was with DAB substrate and counter-staining with haematoxylin.





Immunohistochemistry (Formalin/PFA-fixed paraffin-embedded sections) - Anti-Inhibin alpha antibody [R1] (ab14087)

Immunohistochemical analysis of formalin fixed, paraffin embedded human placenta tissue labeling inhibin alpha with ab14087. Following antigen retrieval in Tris/EDTA pH 9.0. Blocking with peroxidase blocking reagent and 10% normal goat serum. Visualization was with DAB substrate and counter-staining with haematoxylin.

**Please note:** All products are "FOR RESEARCH USE ONLY. NOT FOR USE IN DIAGNOSTIC PROCEDURES"

### Our Abpromise to you: Quality guaranteed and expert technical support

---

- Replacement or refund for products not performing as stated on the datasheet
- Valid for 12 months from date of delivery
- Response to your inquiry within 24 hours
- We provide support in Chinese, English, French, German, Japanese and Spanish
- Extensive multi-media technical resources to help you
- We investigate all quality concerns to ensure our products perform to the highest standards

If the product does not perform as described on this datasheet, we will offer a refund or replacement. For full details of the Abpromise, please visit <https://www.abcam.cn/abpromise> or contact our technical team.

### Terms and conditions

---

- Guarantee only valid for products bought direct from Abcam or one of our authorized distributors