


Anti-Influenza Virus NS1A Binding Protein antibody ab101278

★★★★☆ **1 Abreviews** **2 图像**

概述

产品名称	Anti-Influenza Virus NS1A Binding蛋白抗体
描述	兔多克隆抗体to Influenza Virus NS1A Binding蛋白
宿主	Rabbit
经测试应用	适用于: WB, IP
种属反应性	与反应: Mouse, Human 预测可用于: Dog, Chimpanzee, Rhesus monkey, Gorilla, Orangutan 
免疫原	Other Immunogen Type corresponding to Human Influenza Virus NS1A Binding Protein aa 50-150. Database link: Q9Y6Y0
阳性对照	HeLa, 293T and NIH/3T3 whole cell lysates.
常规说明	<p>The Life Science industry has been in the grips of a reproducibility crisis for a number of years. Abcam is leading the way in addressing this with our range of recombinant monoclonal antibodies and knockout edited cell lines for gold-standard validation. Please check that this product meets your needs before purchasing.</p> <p>If you have any questions, special requirements or concerns, please send us an inquiry and/or contact our Support team ahead of purchase. Recommended alternatives for this product can be found below, along with publications, customer reviews and Q&As</p>

性能

形式	Liquid
存放说明	Shipped at 4°C. Upon delivery aliquot and store at -20°C. Avoid freeze / thaw cycles.
存储溶液	pH: 7.00 Preservative: 0.09% Sodium azide Constituent: 99% Tris citrate/phosphate
纯度	Immunogen affinity purified
纯化说明	ab101278 was affinity purified using an epitope specific to Influenza Virus NS1A Binding Protein immobilized on solid support.
克隆	多克隆
同种型	IgG

应用

The Abpromise guarantee

Abpromise™承诺保证使用ab101278于以下的经测试应用

“应用说明”部分 下显示的仅为推荐的起始稀释度;实际最佳的稀释度/浓度应由使用者检定。

应用	Ab评论	说明
WB		1/2000 - 1/10000. Predicted molecular weight: 71 kDa.
IP		Use at 2-5 µg/mg of lysate.

靶标

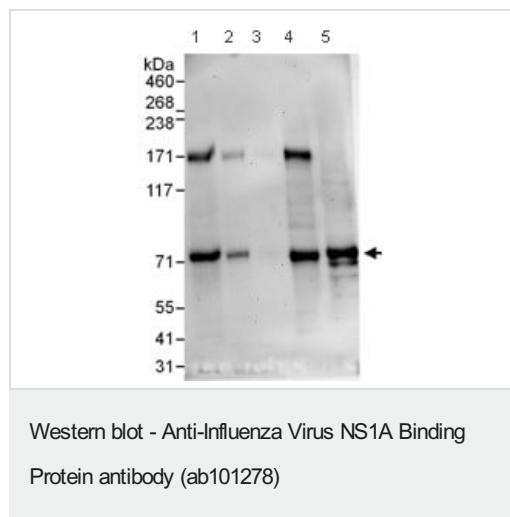
相关性

NS1ABP plays a role in cell division and in the dynamic organization of the actin skeleton as a stabilizer of actin filaments by association with F-actin through Kelch repeats and is known to protect cells from cell death induced by actin destabilization. Interacts with NS/Influenza virus NS1A protein and is believed to mediate the inhibition of its splicing activity. It is usually associated with actin filaments (related to speckle domains) but following Influenza Avirus infection, NS1ABP presents a more diffuse distribution in the nucleoplasm

细胞定位

Nuclear

图片



All lanes : Anti-Influenza Virus NS1A Binding Protein antibody (ab101278) at 0.1 µg/ml

Lane 1 : HeLa whole cell lysate at 50 µg

Lane 2 : HeLa whole cell lysate at 15 µg

Lane 3 : HeLa whole cell lysate at 5 µg

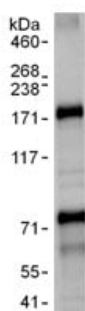
Lane 4 : 293T whole cell lysate at 50 µg

Lane 5 : NIH3T3 whole cell lysate at 50 µg

Developed using the ECL technique.

Predicted band size: 71 kDa

Exposure time: 3 minutes



Immunoprecipitation - Anti-Influenza Virus NS1A
Binding Protein antibody (ab101278)

Detection of Influenza Virus NS1A Binding Protein by Western Blot of Immunoprecipitate.

ab101278, at 1 µg/ml, staining Influenza Virus NS1A Binding Protein in HeLa whole cell lysate immunoprecipitated using ab101278 at 3 µg/mg lysate (1 mg/IP; 20% of IP loaded/lane).

Detection: Chemiluminescence with exposure time of 10 seconds.

Please note: All products are "FOR RESEARCH USE ONLY. NOT FOR USE IN DIAGNOSTIC PROCEDURES"

Our Abpromise to you: Quality guaranteed and expert technical support

- Replacement or refund for products not performing as stated on the datasheet
- Valid for 12 months from date of delivery
- Response to your inquiry within 24 hours
- We provide support in Chinese, English, French, German, Japanese and Spanish
- Extensive multi-media technical resources to help you
- We investigate all quality concerns to ensure our products perform to the highest standards

If the product does not perform as described on this datasheet, we will offer a refund or replacement. For full details of the Abpromise, please visit <https://www.abcam.cn/abpromise> or contact our technical team.

Terms and conditions

- Guarantee only valid for products bought direct from Abcam or one of our authorized distributors