

Anti-Influenza A Virus Hemagglutinin H1 antibody ab91531

4 References [1 图像](#)

概述

产品名称	抗甲型流感Virus Hemagglutinin H1抗体
描述	兔多克隆抗体to甲型流感Virus Hemagglutinin H1
宿主	Rabbit
特异性	ab91531 is specific for the seasonal Influenza A Virus Hemagglutinin H1 and does not cross-react with Swine Influenza A (H1N1) Hemagglutinin.
经测试应用	适用于: ELISA, WB
种属反应性	与反应: Influenza A
免疫原	A synthetic peptide from Influenza A Virus Hemagglutinin H1 (Genbank ACA28844).
阳性对照	Influenza A Virus Hemagglutinin H1
常规说明	<p>The Life Science industry has been in the grips of a reproducibility crisis for a number of years. Abcam is leading the way in addressing this with our range of recombinant monoclonal antibodies and knockout edited cell lines for gold-standard validation. Please check that this product meets your needs before purchasing.</p> <p>If you have any questions, special requirements or concerns, please send us an inquiry and/or contact our Support team ahead of purchase. Recommended alternatives for this product can be found below, along with publications, customer reviews and Q&As</p>

性能

形式	Liquid
存放说明	Shipped at 4°C. Store at +4°C.
存储溶液	<p>pH: 7.2</p> <p>Preservative: 0.02% Sodium azide</p> <p>Constituent: PBS</p>
纯度	Immunogen affinity purified
纯化说明	Affinity chromatography purified via peptide column.
克隆	多克隆
同种型	IgG

The Abpromise guarantee

Abpromise™承诺保证使用ab91531于以下的经测试应用

“应用说明”部分 下显示的仅为推荐的起始稀释度;实际最佳的稀释度/浓度应由使用者检定。

应用	Ab评论	说明
ELISA		
WB		

应用说明

ELISA: Use at a concentration of 1 µg/ml. ab91531 will detect 2 ng of free peptide at 1 µg/ml.

WB: Use at a concentration of 2 µg/ml. Predicted molecular weight: 63 kDa.

Not yet tested in other applications.

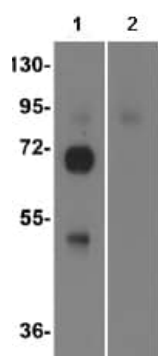
Optimal dilutions/concentrations should be determined by the end user.

靶标

相关性

Influenza A virus is a major public health threat. Novel influenza virus strains caused by genetic drift and viral recombination emerge periodically to which humans have little or no immunity, resulting in devastating pandemics. Influenza A can exist in a variety of animals; however it is in birds that all subtypes can be found. These subtypes are classified based on the combination of the virus coat glycoproteins hemagglutinin (HA) and neuraminidase (NA) subtypes. In natural infection, inactive HA is matured into HA1 and HA2 outside the cell by one or more trypsin-like, arginine-specific endoprotease secreted by the bronchial epithelial cells.

图片



All lanes : Anti-Influenza A Virus Hemagglutinin H1 antibody (ab91531) at 2 µg/ml

Lane 1 : Recombinant Influenza A Virus Hemagglutinin H1

Lane 2 : Recombinant Swine A Virus Hemagglutinin H1

Predicted band size: 63 kDa

Western blot - Anti-Influenza A Virus Hemagglutinin H1 antibody (ab91531)

Please note: All products are "FOR RESEARCH USE ONLY. NOT FOR USE IN DIAGNOSTIC PROCEDURES"

Our Abpromise to you: Quality guaranteed and expert technical support

- Replacement or refund for products not performing as stated on the datasheet
- Valid for 12 months from date of delivery
- Response to your inquiry within 24 hours

- We provide support in Chinese, English, French, German, Japanese and Spanish
- Extensive multi-media technical resources to help you
- We investigate all quality concerns to ensure our products perform to the highest standards

If the product does not perform as described on this datasheet, we will offer a refund or replacement. For full details of the Abpromise, please visit <https://www.abcam.cn/abpromise> or contact our technical team.

Terms and conditions

- Guarantee only valid for products bought direct from Abcam or one of our authorized distributors