

Anti-INF2 antibody ab121114

4 图像

概述

产品名称	Anti-INF2抗体
描述	兔多克隆抗体to INF2
宿主	Rabbit
经测试应用	适用于: IHC-P
种属反应性	与反应: Human
免疫原	Recombinant fragment corresponding to Human INF2 aa 50-250. Database link: Q27J81
阳性对照	IHC-P: INF2 transfected HEK293T cells, Human stomach tissue, U-251MG cells
常规说明	<p>The Life Science industry has been in the grips of a reproducibility crisis for a number of years. Abcam is leading the way in addressing this with our range of recombinant monoclonal antibodies and knockout edited cell lines for gold-standard validation. Please check that this product meets your needs before purchasing.</p> <p>If you have any questions, special requirements or concerns, please send us an inquiry and/or contact our Support team ahead of purchase. Recommended alternatives for this product can be found below, along with publications, customer reviews and Q&As</p>

 [Run BLAST with](#)

 [Run BLAST with](#)

性能

形式	Liquid
存放说明	Shipped at 4°C. Upon delivery aliquot and store at -20°C. Avoid freeze / thaw cycles.
存储溶液	pH: 7.20 Preservative: 0.02% Sodium azide Constituents: 59% PBS, 40% Glycerol (glycerin, glycerine)
纯度	Immunogen affinity purified
克隆	多克隆
同种型	IgG

应用

The Abpromise guarantee

Abpromise™ 承诺保证使用 ab121114 于以下的经测试应用

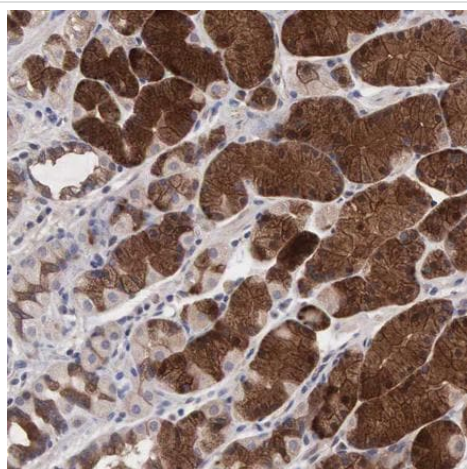
“应用说明”部分下显示的仅为推荐的起始稀释度；实际最佳的稀释度/浓度应由使用者检定。

应用	Ab评论	说明
IHC-P		1/50 - 1/200. Perform heat mediated antigen retrieval with citrate buffer pH 6 before commencing with IHC staining protocol. Use buffer at pH 6 for antigen retrieval.

靶标

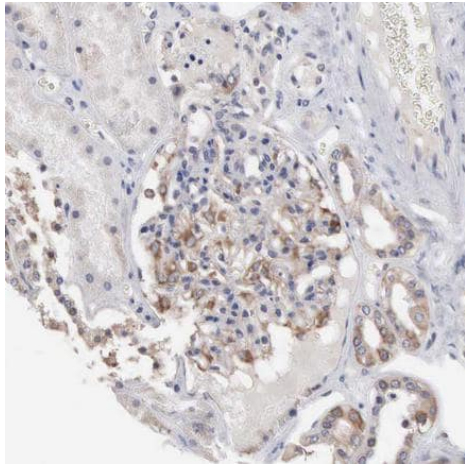
功能	Severs actin filaments and accelerates their polymerization and depolymerization.
组织特异性	Widely expressed. In the kidney, expression is apparent in podocytes and some tubule cells.
疾病相关	Defects in INF2 are the cause of focal segmental glomerulosclerosis type 5 (FSGS5) [MIM:613237]. A renal pathology defined by the presence of segmental sclerosis in glomeruli and resulting in proteinuria, reduced glomerular filtration rate and edema. Renal insufficiency often progresses to end-stage renal disease, a highly morbid state requiring either dialysis therapy or kidney transplantation.
序列相似性	Belongs to the formin homology family. Contains 1 FH2 (formin homology 2) domain. Contains 1 GBD/FH3 (Rho GTPase-binding/formin homology 3) domain. Contains 1 WH2 domain.
结构域	The WH2 domain acts as the DAD (diaphanous autoregulatory) domain and binds to actin monomers. Regulated by autoinhibition due to intramolecular GBD-DAD binding. The severing activity is dependent on covalent attachment of the FH2 domain to the C-terminus.
细胞定位	Cytoplasm > perinuclear region.

图片



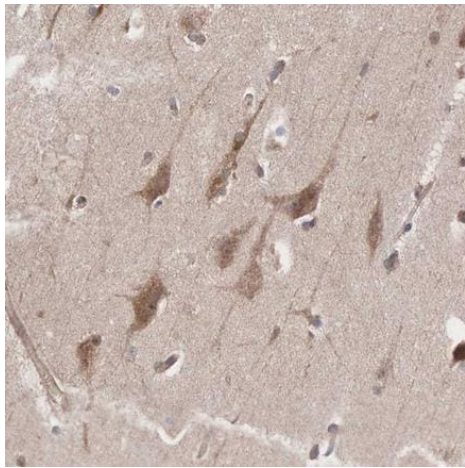
Immunohistochemical analysis of human stomach tissue labelling INF2 with ab121114 at 1/50 dilution. Moderate to strong cytoplasmic positivity in glandular cells is shown.

Immunohistochemistry (Formalin/PFA-fixed paraffin-embedded sections) - Anti-INF2 antibody (ab121114)



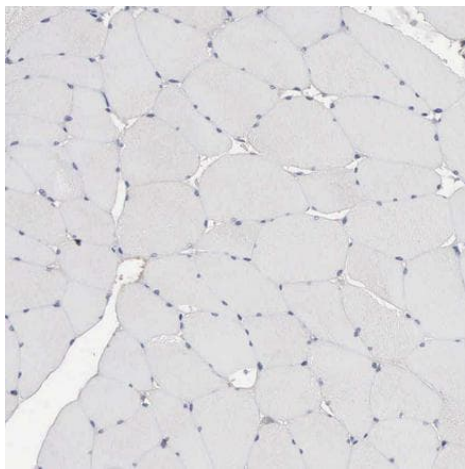
Immunohistochemical analysis of human kidney tissue labelling INF2 with ab121114 at 1/50 dilution. Moderate cytoplasmic positivity in podocytes and cells in tubules is shown.

Immunohistochemistry (Formalin/PFA-fixed paraffin-embedded sections) - Anti-INF2 antibody (ab121114)



Immunohistochemical analysis of human skeletal muscle labelling INF2 with ab121114 at 1/50 dilution. Moderate cytoplasmic positivity in neurons is shown.

Immunohistochemistry (Formalin/PFA-fixed paraffin-embedded sections) - Anti-INF2 antibody (ab121114)



Immunohistochemical analysis of human skeletal muscle labelling INF2 with ab121114 at 1/50 dilution. No cytoplasmic positivity is shown in striated muscle fibres.

Immunohistochemistry (Formalin/PFA-fixed paraffin-embedded sections) - Anti-INF2 antibody (ab121114)

Please note: All products are "FOR RESEARCH USE ONLY. NOT FOR USE IN DIAGNOSTIC PROCEDURES"

Our Abpromise to you: Quality guaranteed and expert technical support

- Replacement or refund for products not performing as stated on the datasheet
- Valid for 12 months from date of delivery
- Response to your inquiry within 24 hours

- We provide support in Chinese, English, French, German, Japanese and Spanish
- Extensive multi-media technical resources to help you
- We investigate all quality concerns to ensure our products perform to the highest standards

If the product does not perform as described on this datasheet, we will offer a refund or replacement. For full details of the Abpromise, please visit <https://www.abcam.cn/abpromise> or contact our technical team.

Terms and conditions

- Guarantee only valid for products bought direct from Abcam or one of our authorized distributors