

Anti-Importin 9/RANBP9 antibody [EPR1352] ab124710

敲除验证 重组 RabMAb

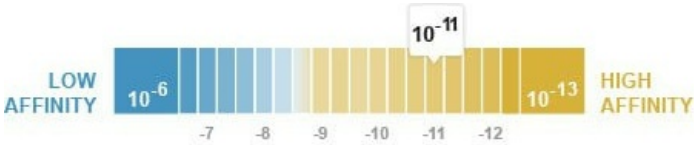
2 References 5 图像

概述

产品名称	Anti-Importin 9/RANBP9抗体[EPR1352]
描述	兔单克隆抗体[EPR1352] to Importin 9/RANBP9
宿主	Rabbit
经测试应用	适用于: WB, IHC-P 不适用于: Flow Cyt or IP
种属反应性	与反应: Mouse, Rat, Human
免疫原	Synthetic peptide. This information is proprietary to Abcam and/or its suppliers.
阳性对照	HeLa, SKBR-3, C6, and NIH/3T3 cell lysates and Human brain tissue.
常规说明	This product is a recombinant monoclonal antibody, which offers several advantages including: - High batch-to-batch consistency and reproducibility - Improved sensitivity and specificity - Long-term security of supply - Animal-free production For more information see here . Our RabMAb [®] technology is a patented hybridoma-based technology for making rabbit monoclonal antibodies. For details on our patents, please refer to RabMAb[®] patents .

性能

形式	Liquid
存放说明	Shipped at 4°C. Store at -20°C. Stable for 12 months at -20°C.
解离常数 (K _D)	K _D = 2.29 x 10 ⁻¹¹ M



[Learn more about K_D](#)

存储溶液	pH: 7.20 Preservative: 0.05% Sodium azide Constituents: 40% Glycerol (glycerin, glycerine), 9.85% Tris glycine, 50% Tissue culture
------	--

纯度	supernatant
克隆	Protein A purified
克隆编号	单克隆
同种型	EPR1352
	IgG

应用

The Abpromise guarantee **Abpromise™承诺保证使用ab124710于以下的经测试应用**

“应用说明”部分下显示的仅为推荐的起始稀释度;实际最佳的稀释度/浓度应由使用者检定。

应用	Ab评论	说明
WB		1/1000 - 1/10000. Predicted molecular weight: 116 kDa.
IHC-P		1/500 - 1/1000. Perform heat mediated antigen retrieval before commencing with IHC staining protocol.

应用说明 Is unsuitable for Flow Cyt or IP.

靶标

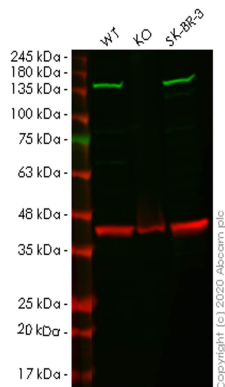
功能

Functions in nuclear protein import as nuclear transport receptor. Serves as receptor for nuclear localization signals (NLS) in cargo substrates. Is thought to mediate docking of the importin/substrate complex to the nuclear pore complex (NPC) through binding to nucleoporin and the complex is subsequently translocated through the pore by an energy requiring, Ran-dependent mechanism. At the nucleoplasmic side of the NPC, Ran binds to the importin, the importin/substrate complex dissociates and importin is re-exported from the nucleus to the cytoplasm where GTP hydrolysis releases Ran. The directionality of nuclear import is thought to be conferred by an asymmetric distribution of the GTP- and GDP-bound forms of Ran between the cytoplasm and nucleus (By similarity). Mediates the nuclear import of H2B histone (By similarity), RPS7 and RPL18A. Prevents the cytoplasmic aggregation of RPS7 and RPL18A by shielding exposed basic domains. May also import H2A, H3, H4 histones (By similarity), RPL4 and RPL6.

序列相似性	<p>Belongs to the importin beta family.</p> <p>Contains 1 importin N-terminal domain.</p>
-------	---

细胞定位 Cytoplasm. Nucleus.

图片



Western blot - Anti-Importin 9/RANBP9 antibody [EPR1352] (ab124710)

All lanes : Anti-Importin 9/RANBP9 antibody [EPR1352] (ab124710) at 1/1000 dilution

Lane 1 : Wild-type HeLa cell lysate

Lane 2 : IPO9 knockout HeLa cell lysate

Lane 3 : SK-BR-3 cell lysate

Lysates/proteins at 20 µg per lane.

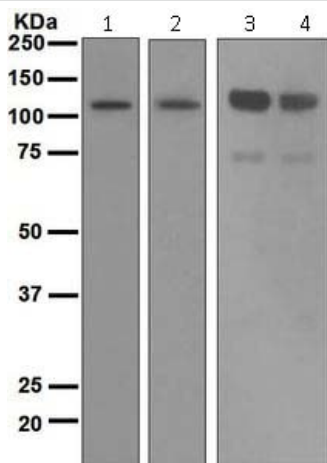
Predicted band size: 116 kDa

Lanes 1-3: Merged signal (red and green). Green - ab124710.

Red - loading control, **ab8245** observed at 36 kDa.

ab124710 was shown to react with IPO9 in wild-type HeLa cells in western blot. Loss of signal was observed when knockout cell line **ab265352** (knockout cell lysate **ab257483**) was used. Wild-type and IPO9 knockout samples were subjected to SDS-PAGE.

ab124710 and Anti-GAPDH antibody [6C5] - Loading Control (**ab8245**) were incubated overnight at 4°C at 1 in 1000 dilution and 1 in 20000 dilution respectively. Blots were developed with Goat anti-Rabbit IgG H&L (IRDye® 800CW) preadsorbed (**ab216773**) and Goat anti-Mouse IgG H&L (IRDye® 680RD) preadsorbed (**ab216776**) secondary antibodies at 1 in 10000 dilution for 1 hour at room temperature before imaging.



Western blot - Anti-Importin 9/RANBP9 antibody [EPR1352] (ab124710)

All lanes : Anti-Importin 9/RANBP9 antibody [EPR1352] (ab124710) at 1/1000 dilution

Lane 1 : HeLa cell lysate

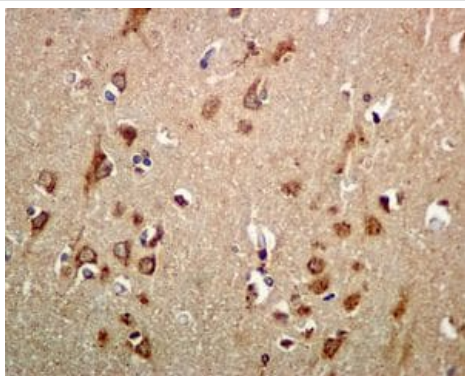
Lane 2 : SKBR-3 cell lysate

Lane 3 : C6 cell lysate

Lane 4 : NIH/3T3 cell lysate

Lysates/proteins at 10 µg per lane.

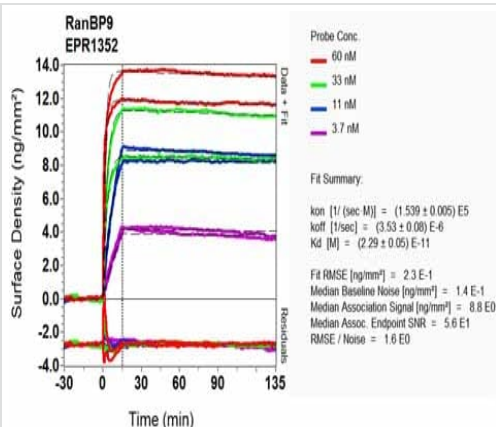
Predicted band size: 116 kDa



Immunohistochemistry (Formalin/PFA-fixed paraffin-embedded sections) - Anti-Importin 9/RANBP9 antibody [EPR1352] (ab124710)

ab124710, at 1/500 to 1/1000, staining Importin 9/RANBP9 in Human brain tissue by immunohistochemistry [Paraffin Embedded Tissues (IHC-P)].

Perform heat mediated antigen retrieval before commencing with IHC staining protocol.



SPR Scanning - Anti-Importin 9/RANBP9 antibody [EPR1352] (ab124710)

Equilibrium dissociation constant (K_D)

Learn more about K_D

[Click here to learn more about \$K_D\$](#)

Why choose a recombinant antibody?



Research with confidence
Consistent and reproducible results



Long-term and scalable supply
Recombinant technology



Success from the first experiment
Confirmed specificity



Ethical standards compliant
Animal-free production

Anti-Importin 9/RANBP9 antibody [EPR1352]
(ab124710)

Please note: All products are "FOR RESEARCH USE ONLY. NOT FOR USE IN DIAGNOSTIC PROCEDURES"

Our Abpromise to you: Quality guaranteed and expert technical support

- Replacement or refund for products not performing as stated on the datasheet
- Valid for 12 months from date of delivery
- Response to your inquiry within 24 hours
- We provide support in Chinese, English, French, German, Japanese and Spanish
- Extensive multi-media technical resources to help you
- We investigate all quality concerns to ensure our products perform to the highest standards

If the product does not perform as described on this datasheet, we will offer a refund or replacement. For full details of the Abpromise, please visit <https://www.abcam.cn/abpromise> or contact our technical team.

Terms and conditions

- Guarantee only valid for products bought direct from Abcam or one of our authorized distributors