

Anti-Importin 7 antibody ab99273

[12 References](#) [3 图像](#)

概述

产品名称	Anti-Importin 7抗体
描述	兔多克隆抗体to Importin 7
宿主	Rabbit
经测试应用	适用于: WB, IP, IHC-P
种属反应性	与反应: Mouse, Human 预测可用于: Rat, Rabbit, Horse, Guinea pig, Cow, Dog, Pig, Chimpanzee, Rhesus monkey, Gorilla, Chinese hamster, Elephant 
免疫原	Synthetic peptide within Human Importin 7 aa 200-300. The exact immunogen sequence used to generate this antibody is proprietary information. If additional detail on the immunogen is needed to determine the suitability of the antibody for your needs, please contact our Scientific Support team to discuss your requirements. NP_006382.1 Database link: O95373
阳性对照	HeLa whole cell lysate (ab150035), 293T whole cell lysate and Mouse NIH3T3 whole cell lysate.
常规说明	<p>The Life Science industry has been in the grips of a reproducibility crisis for a number of years. Abcam is leading the way in addressing this with our range of recombinant monoclonal antibodies and knockout edited cell lines for gold-standard validation. Please check that this product meets your needs before purchasing.</p> <p>If you have any questions, special requirements or concerns, please send us an inquiry and/or contact our Support team ahead of purchase. Recommended alternatives for this product can be found below, along with publications, customer reviews and Q&As</p>

性能

形式	Liquid
存放说明	Shipped at 4°C. Upon delivery aliquot and store at -20°C. Avoid freeze / thaw cycles.
存储溶液	pH: 6.8 Preservative: 0.09% Sodium azide Constituents: 0.1% BSA, Tris buffered saline
纯度	Immunogen affinity purified
纯化说明	ab99273 was affinity purified using an epitope specific to Importin 7 immobilized on solid support.
克隆	多克隆

应用

The Abpromise guarantee **Abpromise™**承诺保证使用ab99273于以下的经测试应用

“应用说明”部分 下显示的仅为推荐的起始稀释度;实际最佳的稀释度/浓度应由使用者检定。

应用	Ab评论	说明
WB		1/2000 - 1/10000. Predicted molecular weight: 120 kDa.
IP		Use at 5-15 µg/mg of lysate.
IHC-P		1/200 - 1/1000. Perform heat mediated antigen retrieval with citrate buffer pH 6 before commencing with IHC staining protocol.

靶标

功能

Functions in nuclear protein import, either by acting as autonomous nuclear transport receptor or as an adapter-like protein in association with the importin-beta subunit KPMB1. Acting autonomously, is thought to serve itself as receptor for nuclear localization signals (NLS) and to promote translocation of import substrates through the nuclear pore complex (NPC) by an energy requiring, Ran-dependent mechanism. At the nucleoplasmic side of the NPC, Ran binds to importin, the importin/substrate complex dissociates and importin is re-exported from the nucleus to the cytoplasm where GTP hydrolysis releases Ran. The directionality of nuclear import is thought to be conferred by an asymmetric distribution of the GTP- and GDP-bound forms of Ran between the cytoplasm and nucleus. Mediates autonomously the nuclear import of ribosomal proteins RPL23A, RPS7 and RPL5. Binds to a beta-like import receptor binding (BIB) domain of RPL23A. In association with KPMB1 mediates the nuclear import of H1 histone and the Ran-binding site of IPO7 is not required but synergizes with that of KPMB1 in importin/substrate complex dissociation. In vitro, mediates nuclear import of H2A, H2B, H3 and H4 histones. In vitro, mediates the nuclear import of HIV-1 reverse transcription complex (RTC) integrase. In case of HIV-1 infection, binds and mediates the nuclear import of HIV-1 Rev.

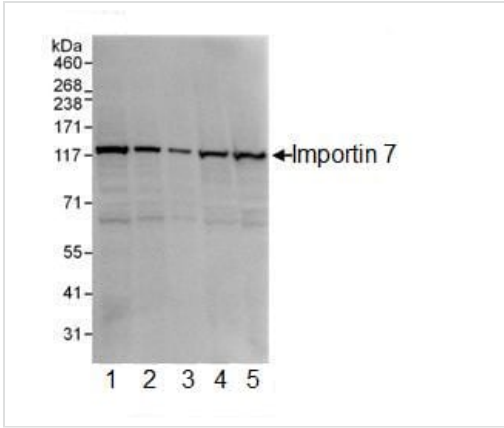
序列相似性

Belongs to the importin beta family.
Contains 1 importin N-terminal domain.

细胞定位

Cytoplasm. Nucleus.

图片



Western blot - Anti-Importin 7 antibody (ab99273)

All lanes : Anti-Importin 7 antibody (ab99273) at 0.04 µg/ml

Lane 1 : HeLa whole cell lysate at 50 µg

Lane 2 : HeLa whole cell lysate at 15 µg

Lane 3 : HeLa whole cell lysate at 5 µg

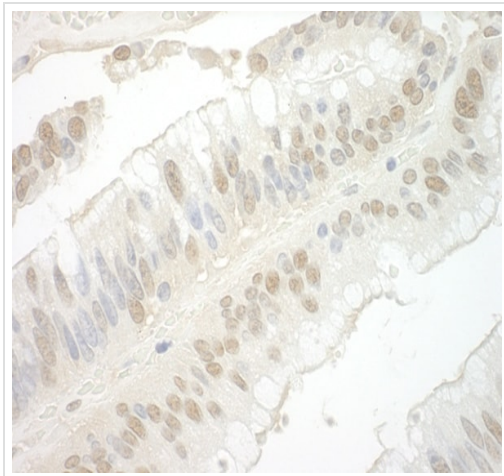
Lane 4 : 293T whole cell lysate at 50 µg

Lane 5 : Mouse NIH3T3 whole cell lysate at 50 µg

Developed using the ECL technique.

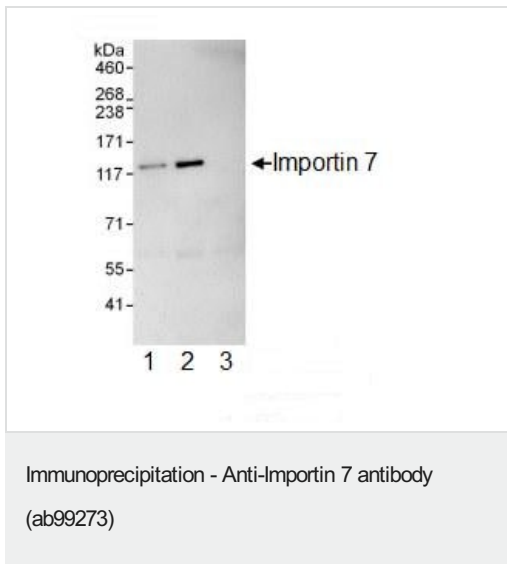
Predicted band size: 120 kDa

Exposure time: 3 seconds



Immunohistochemistry (Formalin/PFA-fixed paraffin-embedded sections) - Anti-Importin 7 antibody (ab99273)

Immunohistochemistry (Formalin/PFA-fixed paraffin-embedded sections) analysis of human colon carcinoma tissue labelling Importin 7 with ab99273 at 1/1000 (0.2µg/mg). Detection: DAB.



ab99273 at 0.1 µg/ml detecting Importin 7 in HeLa whole cell lysate by western blot analysis following immunoprecipitation. Detection utilised ECL with a 1 second exposure.

For immunoprecipitation, ab99273 was used at 10 µg/mg lysate; 1 mg of lysate was used for IP and 20% of IP was loaded.

Lane 1; IP using **ab99272** which recognizes an upstream epitope of Importin 7.

Lane 2; IP using ab99273.

Lane 3; IP using control IgG.

Please note: All products are "FOR RESEARCH USE ONLY. NOT FOR USE IN DIAGNOSTIC PROCEDURES"

Our Abpromise to you: Quality guaranteed and expert technical support

- Replacement or refund for products not performing as stated on the datasheet
- Valid for 12 months from date of delivery
- Response to your inquiry within 24 hours
- We provide support in Chinese, English, French, German, Japanese and Spanish
- Extensive multi-media technical resources to help you
- We investigate all quality concerns to ensure our products perform to the highest standards

If the product does not perform as described on this datasheet, we will offer a refund or replacement. For full details of the Abpromise, please visit <https://www.abcam.cn/abpromise> or contact our technical team.

Terms and conditions

- Guarantee only valid for products bought direct from Abcam or one of our authorized distributors