


Anti-IMPDH2 antibody [EPR8364(B)] ab131158

重组 RabMAb

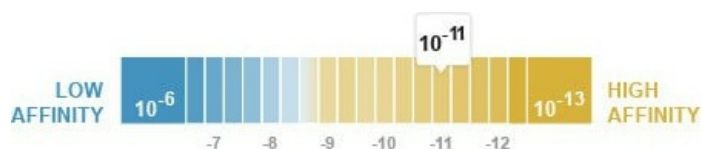
★★★★☆ **1 Abreviews** **13 References** **6 图像**

概述

产品名称	Anti-IMPDH2抗体[EPR8364(B)]
描述	兔单克隆抗体[EPR8364(B)] to IMPDH2
宿主	Rabbit
特异性	The immunogen used to raise this antibody shares 79% homology with Human IMPDH1. This antibody shows very faint band when testing IMPDH1 recombinant protein in WB test.
经测试应用	适用于: WB, IHC-P, ICC/IF
种属反应性	与反应: Human 预测可用于: Mouse, Rat 
免疫原	Synthetic peptide within Human IMPDH2 aa 100-200. The exact sequence is proprietary.
阳性对照	K562, HepG2, HeLa and NCI-H460 cell lysates; Human colon tissue
常规说明	This product is a recombinant monoclonal antibody, which offers several advantages including: <ul style="list-style-type: none"> - High batch-to-batch consistency and reproducibility - Improved sensitivity and specificity - Long-term security of supply - Animal-free production For more information see here . Our RabMAb [®] technology is a patented hybridoma-based technology for making rabbit monoclonal antibodies. For details on our patents, please refer to RabMAb[®] patents .

性能

形式	Liquid
存放说明	Shipped at 4°C. Store at -20°C. Stable for 12 months at -20°C.
解离常数 (K_D)	K _D = 2.20 x 10 ⁻¹¹ M



[Learn more about K_D](#)

存储溶液	pH: 7.20 Preservative: 0.01% Sodium azide Constituents: 9% PBS, 40% Glycerol (glycerin, glycerine), 0.05% BSA, 50% Tissue culture supernatant
纯度	Protein A purified
克隆	单克隆
克隆编号	EPR8364(B)
同种型	IgG

应用

The Abpromise guarantee **Abpromise™**承诺保证使用ab131158于以下的经测试应用

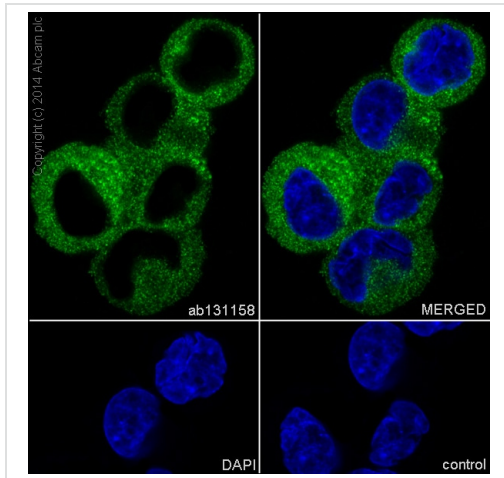
“应用说明”部分 下显示的仅为推荐的起始稀释度;实际最佳的稀释度/浓度应由使用者检定。

应用	Ab评论	说明
WB		1/1000 - 1/10000. Predicted molecular weight: 56 kDa.
IHC-P	★★★★★ (1)	1/100 - 1/250. Perform heat mediated antigen retrieval with citrate buffer pH 6 before commencing with IHC staining protocol.
ICC/IF		1/100 - 1/250.

靶标

功能	Rate limiting enzyme in the de novo synthesis of guanine nucleotides and therefore is involved in the regulation of cell growth. It may also have a role in the development of malignancy and the growth progression of some tumors.
组织特异性	IMP type I is the main species in normal leukocytes and type II predominates over type I in the tumor.
通路	Purine metabolism; XMP biosynthesis via de novo pathway; XMP from IMP: step 1/1.
序列相似性	Belongs to the IMPDH/GMPR family. Contains 2 CBS domains.
翻译后修饰	The N-terminus is blocked.

图片

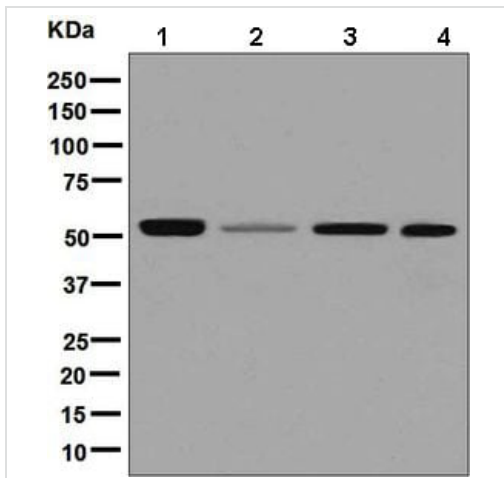


Immunocytochemistry/ Immunofluorescence - Anti-IMPDPH2 antibody [EPR8364(B)] (ab131158)

ab131158 staining IMPDH2 in K562 (human chronic myelogenous leukemia) cells by ICC/IF

(Immunocytochemistry/immunofluorescence). Cells were fixed with 4% PFA and permeabilized with 0.1% triton X-100. Samples were incubated with primary antibody at a dilution of 1/500. A goat anti rabbit IgG (Alexa Fluor® 488) ([ab150077](#)) was used as the secondary antibody at a dilution of 1/1000.

DAPI was used as a nuclear counterstain and the negative control was PBS only.



Western blot - Anti-IMPDPH2 antibody [EPR8364(B)] (ab131158)

All lanes : Anti-IMPDPH2 antibody [EPR8364(B)] (ab131158) at 1/1000 dilution

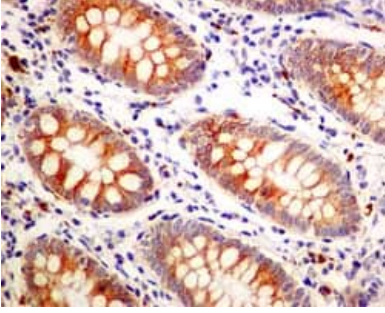
Lane 1 : K562 cell lysate

Lane 2 : HepG2 cell lysate

Lane 3 : HeLa cell lysate

Lane 4 : NCI-H460 cell lysate

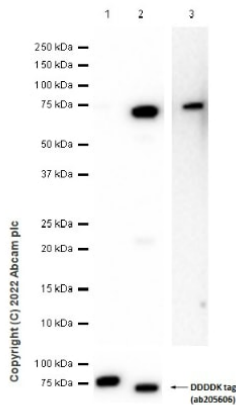
Predicted band size: 56 kDa



Immunohistochemistry (Formalin/PFA-fixed paraffin-embedded sections) - Anti-IMPDH2 antibody [EPR8364(B)] (ab131158)

Immunohistochemical analysis of paraffin-embedded Human colon tissue labelling IMPDH2 with ab131158 at 1/100 dilution.

Perform heat mediated antigen retrieval with citrate buffer pH 6 before commencing with IHC staining protocol.



Western blot - Anti-IMPDH2 antibody [EPR8364(B)] (ab131158)

All lanes : Anti-IMPDH2 antibody [EPR8364(B)] (ab131158) at 1/1000 dilution

Lanes 1 & 3 : C-Myc/DDK tagged full length IMPDH1 Human Recombinant Protein

Lane 2 : C-Myc/DDK tagged full length IMPDH2 Human Recombinant Protein

Secondary

All lanes : Goat Anti-Rabbit IgG H&L (HRP) ([ab97051](#)) at 1/20000 dilution

Predicted band size: 56 kDa

Observed band size: 75 kDa

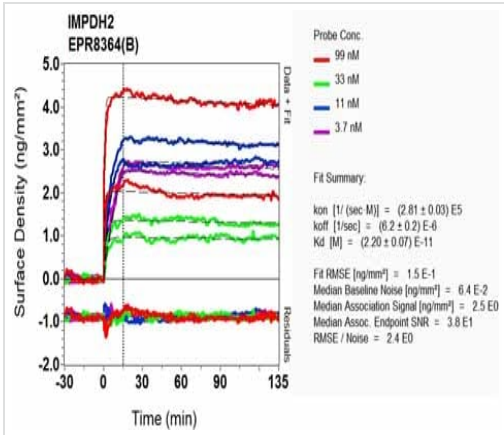
Blocking and dilution buffer: 5% NFDN/TBST.

Exposure times:

Lane 1&2: 5 seconds

Lane 3: 180 seconds.

This antibody shows very faint band when testing IMPDH1 recombinant protein in WB test



OI-RD Scanning - Anti-IMP2H2 antibody
[EPR8364(B)] (ab131158)

Equilibrium disassociation constant (K_D)

Learn more about K_D

[Click here to learn more about \$K_D\$](#)

Why choose a recombinant antibody?

Research with confidence
Consistent and reproducible results

Long-term and scalable supply
Recombinant technology

Success from the first experiment
Confirmed specificity

Ethical standards compliant
Animal-free production

Anti-IMP2H2 antibody [EPR8364(B)] (ab131158)

Please note: All products are "FOR RESEARCH USE ONLY. NOT FOR USE IN DIAGNOSTIC PROCEDURES"

Our Promise to you: Quality guaranteed and expert technical support

- Replacement or refund for products not performing as stated on the datasheet
- Valid for 12 months from date of delivery
- Response to your inquiry within 24 hours
- We provide support in Chinese, English, French, German, Japanese and Spanish
- Extensive multi-media technical resources to help you
- We investigate all quality concerns to ensure our products perform to the highest standards

If the product does not perform as described on this datasheet, we will offer a refund or replacement. For full details of the Abpromise, please visit <https://www.abcam.cn/abpromise> or contact our technical team.

Terms and conditions

- Guarantee only valid for products bought direct from Abcam or one of our authorized distributors