


Anti-ILF2/NF45 antibody ab113205

2 References **4 图像**

概述

产品名称	Anti-ILF2/NF45抗体
描述	兔多克隆抗体to ILF2/NF45
宿主	Rabbit
经测试应用	适用于: IHC-P, WB, IP
种属反应性	与反应: Mouse, Human 预测可用于: Rat, Rabbit, Horse, Chicken, Guinea pig, Cow, Dog, Turkey, Pig, Xenopus laevis, Chimpanzee, Rhesus monkey, Orangutan, Xenopus tropicalis 
免疫原	Synthetic peptide corresponding to Human ILF2/NF45 aa 340-390. Database link: NP_004506.2
阳性对照	WB: HeLa, 293T and mouse NIH3T3 cell lysates. IHC: mouse renal cell carcinoma, human lung cancer
常规说明	<p>The Life Science industry has been in the grips of a reproducibility crisis for a number of years. Abcam is leading the way in addressing this with our range of recombinant monoclonal antibodies and knockout edited cell lines for gold-standard validation. Please check that this product meets your needs before purchasing.</p> <p>If you have any questions, special requirements or concerns, please send us an inquiry and/or contact our Support team ahead of purchase. Recommended alternatives for this product can be found below, along with publications, customer reviews and Q&As</p>

性能

形式	Liquid
存放说明	Shipped at 4°C. Upon delivery aliquot and store at -20°C. Avoid freeze / thaw cycles.
存储溶液	pH: 7.00 Preservative: 0.09% Sodium azide Constituent: 99% Tris citrate/phosphate
纯度	pH 7 to 8 Immunogen affinity purified
克隆	多克隆
同种型	IgG

应用

The Abpromise guarantee **Abpromise™**承诺保证使用ab113205于以下的经测试应用

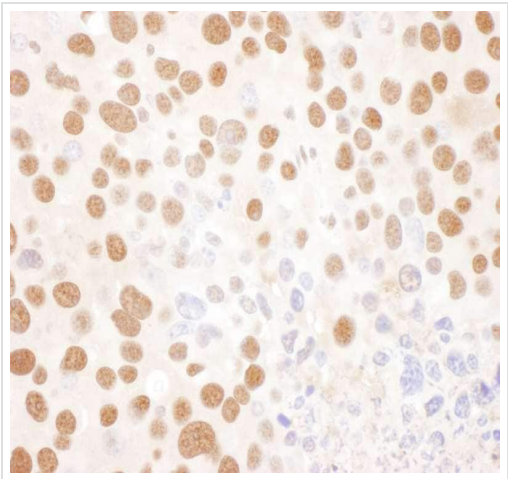
“应用说明”部分 下显示的仅为推荐的起始稀释度;实际最佳的稀释度/浓度应由使用者检定。

应用	Ab评论	说明
IHC-P		1/1000 - 1/5000. Perform heat mediated antigen retrieval with citrate buffer pH 6 before commencing with IHC staining protocol.
WB		1/2000 - 1/10000. Predicted molecular weight: 43 kDa.
IP		Use at 2-10 µg/mg of lysate.

靶标

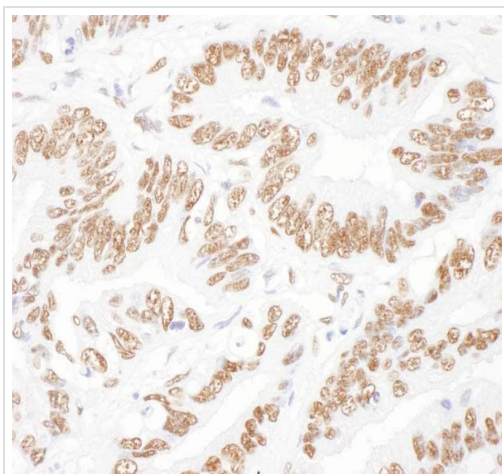
功能	Appears to function predominantly as a heterodimeric complex with ILF3. This complex may regulate transcription of the IL2 gene during T-cell activation. It can also promote the formation of stable DNA-dependent protein kinase holoenzyme complexes on DNA.
序列相似性	Contains 1 DZF domain.
翻译后修饰	Phosphorylated upon DNA damage, probably by ATM or ATR.
细胞定位	Nucleus > nucleolus. Cytoplasm. Localized in cytoplasmic mRNP granules containing untranslated mRNAs.

图片



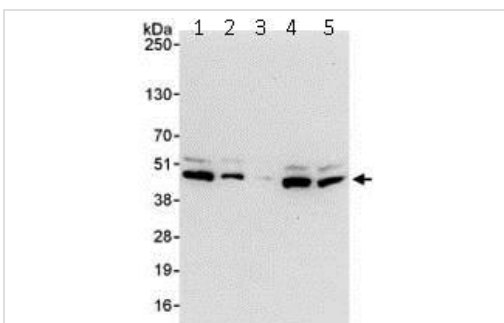
Immunohistochemistry (Formalin/PFA-fixed paraffin-embedded sections) - Anti-ILF2/NF45 antibody (ab113205)

Immunohistochemistry (Formalin/PFA-fixed paraffin-embedded sections) analysis of mouse renal cell carcinoma tissue labelling ILF1 / NF45 with ab113205 at 1/1000 dilution. Heat mediated antigen retrieval performed with citrate buffer pH 6 before commencing with IHC staining protocol.



Immunohistochemistry (Formalin/PFA-fixed paraffin-embedded sections) - Anti-ILF2/NF45 antibody (ab113205)

Immunohistochemistry (Formalin/PFA-fixed paraffin-embedded sections) analysis of human lung cancer tissue labelling ILF1 / NF45 with ab113205 at 1/5000 dilution. Heat mediated antigen retrieval performed with citrate buffer pH 6 before commencing with IHC staining protocol.



Western blot - Anti-ILF2/NF45 antibody (ab113205)

All lanes : Anti-ILF2/NF45 antibody (ab113205) at 0.1 µg/ml

Lane 1 : HeLa cell lysate at 50 µg

Lane 2 : HeLa cell lysate at 15 µg

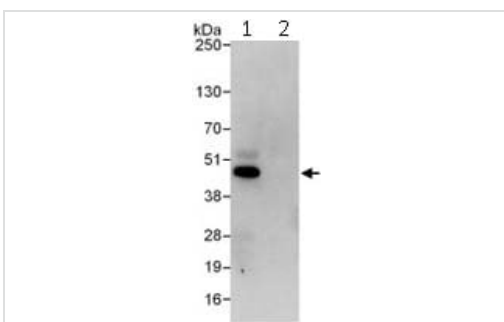
Lane 3 : HeLa cell lysate at 5 µg

Lane 4 : 293T cell lysate at 50 µg

Lane 5 : NIH3T3 cell lysate at 50 µg

Predicted band size: 43 kDa

Exposure time: 10 seconds



Immunoprecipitation - Anti-ILF2/NF45 antibody (ab113205)

Detection of ILF2/NF45 by Western Blot of Immunoprecipitate.

Lane 1: ab113205 at 1µg/ml staining ILF2/NF45 in HeLa whole cell lysate immunoprecipitated using ab113205 at 6µg/mg lysate (1 mg/IP; 20% of IP loaded/lane).

Lane 2: Control IgG

Detection: Chemiluminescence with exposure time of 10 seconds.

Please note: All products are "FOR RESEARCH USE ONLY. NOT FOR USE IN DIAGNOSTIC PROCEDURES"

Our Abpromise to you: Quality guaranteed and expert technical support

- Replacement or refund for products not performing as stated on the datasheet
- Valid for 12 months from date of delivery
- Response to your inquiry within 24 hours

- We provide support in Chinese, English, French, German, Japanese and Spanish
- Extensive multi-media technical resources to help you
- We investigate all quality concerns to ensure our products perform to the highest standards

If the product does not perform as described on this datasheet, we will offer a refund or replacement. For full details of the Abpromise, please visit <https://www.abcam.cn/abpromise> or contact our technical team.

Terms and conditions

- Guarantee only valid for products bought direct from Abcam or one of our authorized distributors