


# Anti-IL2 Receptor beta/p75 antibody ab61195

[2 Abreviews](#) [5 References](#) [2 图像](#)

### 概述

产品名称	Anti-IL2 Receptor beta/p75抗体
描述	兔多克隆抗体to IL2 Receptor beta/p75
宿主	Rabbit
经测试应用	适用于: IHC-P, WB
种属反应性	与反应: Human, African green monkey 预测可用于: Mouse, Rat 
免疫原	Synthetic peptide corresponding to Human IL2 Receptor beta/p75.
阳性对照	WB: COS7 cell extracts. IHC-P: Human lung carcinoma tissue.
常规说明	<p>The Life Science industry has been in the grips of a reproducibility crisis for a number of years. Abcam is leading the way in addressing this with our range of recombinant monoclonal antibodies and knockout edited cell lines for gold-standard validation. Please check that this product meets your needs before purchasing.</p> <p>If you have any questions, special requirements or concerns, please send us an inquiry and/or contact our Support team ahead of purchase. Recommended alternatives for this product can be found below, along with publications, customer reviews and Q&amp;As</p>

### 性能

形式	Liquid
存放说明	Shipped at 4°C. Store at -20°C. Stable for 12 months at -20°C.
存储溶液	pH: 7.40 Preservative: 0.02% Sodium azide Constituents: PBS, 50% Glycerol (glycerin, glycerine), 0.87% Sodium chloride
纯度	Without Mg <sup>2+</sup> and Ca <sup>2+</sup> Immunogen affinity purified
纯化说明	ab61195 was affinity-purified from rabbit antiserum by affinity-chromatography using epitope-specific immunogen.
克隆	多克隆
同种型	IgG

## 应用

**The Abpromise guarantee**      **Abpromise™**承诺保证使用ab61195于以下的经测试应用

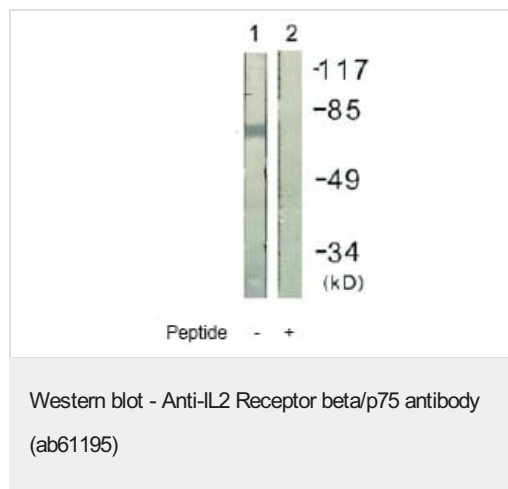
“应用说明”部分 下显示的仅为推荐的起始稀释度;实际最佳的稀释度/浓度应由使用者检定。

应用	Ab评论	说明
IHC-P		1/50 - 1/100.
WB		1/500 - 1/1000. Detects a band of approximately 61 kDa (predicted molecular weight: 61 kDa).

## 靶标

<b>功能</b>	Receptor for interleukin-2. This beta subunit is involved in receptor mediated endocytosis and transduces the mitogenic signals of IL2.
<b>序列相似性</b>	Belongs to the type I cytokine receptor family. Type 4 subfamily. Contains 1 fibronectin type-III domain.
<b>结构域</b>	The WSXWS motif appears to be necessary for proper protein folding and thereby efficient intracellular transport and cell-surface receptor binding. The box 1 motif is required for JAK interaction and/or activation.
<b>细胞定位</b>	Membrane.

## 图片



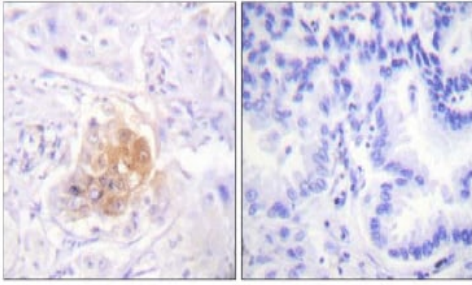
**All lanes** : Anti-IL2 Receptor beta/p75 antibody (ab61195) at 1/500 dilution

**Lane 1** : COS7 cell extracts

**Lane 2** : COS7 cell extracts with immunising peptide

**Predicted band size:** 61 kDa

**Observed band size:** 61 kDa



Peptide - +

Immunohistochemistry (Formalin/PFA-fixed paraffin-embedded sections) - Anti-IL2 Receptor beta/p75 antibody (ab61195)

ab61195 at 1/50 dilution staining IL2 Receptor beta/p75 in human lung carcinoma by Immunohistochemistry, Paraffin-embedded tissue, in the absence (left) or presence (right) of the immunising peptide.

**Please note:** All products are "FOR RESEARCH USE ONLY. NOT FOR USE IN DIAGNOSTIC PROCEDURES"

### Our Abpromise to you: Quality guaranteed and expert technical support

---

- Replacement or refund for products not performing as stated on the datasheet
- Valid for 12 months from date of delivery
- Response to your inquiry within 24 hours
- We provide support in Chinese, English, French, German, Japanese and Spanish
- Extensive multi-media technical resources to help you
- We investigate all quality concerns to ensure our products perform to the highest standards

If the product does not perform as described on this datasheet, we will offer a refund or replacement. For full details of the Abpromise, please visit <https://www.abcam.cn/abpromise> or contact our technical team.

### Terms and conditions

---

- Guarantee only valid for products bought direct from Abcam or one of our authorized distributors