

### Anti-IL-6 antibody [EPR20653] ab214429

敲除验证
重组
RabMAb

[4 References](#)
[5 图像](#)

#### 概述

产品名称	Anti-IL-6抗体[EPR20653]
描述	兔单克隆抗体[EPR20653] to IL-6
宿主	Rabbit
经测试应用	适用于: WB, ICC/IF, IP
种属反应性	与反应: Human
免疫原	Recombinant fragment. This information is proprietary to Abcam and/or its suppliers.
阳性对照	WB: HUVEC treated with 0.5 µg/ml Lipopolysaccharides (LPS) for 24 hours and 300 ng/ml Brefeldin A (BFA) for 20 hours whole cell lysate; Wild-type A549 IL-1β ( <a href="#">ab259387</a> ) (20 ng/ml, 24h) and Brefeldin A ( <a href="#">ab120299</a> )-treated (5 µg/ml for the last 4h) cell lysate ICC/IF: HUVEC treated with Lipopolysaccharides (LPS) (0.5 µg/ml 24h) and Brefeldin A (BFA) (300 ng/ml 20h) cells. IP: HUVEC treated with 0.5 µg/ml Lipopolysaccharides (LPS) for 24 hours and 300 ng/ml Brefeldin A (BFA) for 20 hours whole cell lysate.
常规说明	<p>This product is a recombinant monoclonal antibody, which offers several advantages including:</p> <ul style="list-style-type: none"> <li>- High batch-to-batch consistency and reproducibility</li> <li>- Improved sensitivity and specificity</li> <li>- Long-term security of supply</li> <li>- Animal-free production</li> </ul> <p>For more information <a href="#">see here</a>.</p> <p>Our RabMAb<sup>®</sup> technology is a patented hybridoma-based technology for making rabbit monoclonal antibodies. For details on our patents, please refer to <a href="#">RabMAb<sup>®</sup> patents</a>.</p>

#### 性能

形式	Liquid
存放说明	Shipped at 4°C. Store at +4°C short term (1-2 weeks). Upon delivery aliquot. Store at -20°C long term. Avoid freeze / thaw cycle.
存储溶液	<p>pH: 7.2</p> <p>Preservative: 0.01% Sodium azide</p> <p>Constituents: 0.05% BSA, 40% Glycerol (glycerin, glycerine), PBS</p>
纯度	Protein A purified

克隆	单克隆
克隆编号	EPR20653
同种型	IgG

应用

The Abpromise guarantee

Abpromise™承诺保证使用ab214429于以下的经测试应用

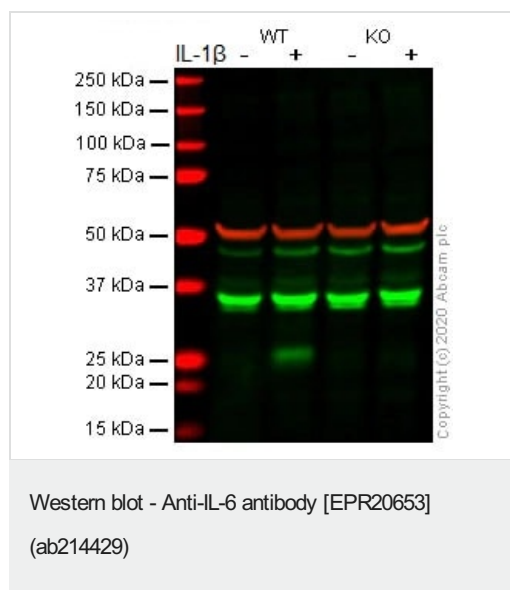
“应用说明”部分 下显示的仅为推荐的起始稀释度;实际最佳的稀释度/浓度应由使用者检定。

应用	Ab评论	说明
WB		1/1000. Detects a band of approximately 21-28 kDa (predicted molecular weight: 23 kDa).
ICC/IF		1/500.
IP		1/30.

靶标

功能	Cytokine with a wide variety of biological functions. It is a potent inducer of the acute phase response. Plays an essential role in the final differentiation of B-cells into Ig-secreting cells Involved in lymphocyte and monocyte differentiation. It induces myeloma and plasmacytoma growth and induces nerve cells differentiation Acts on B-cells, T-cells, hepatocytes, hematopoietic progenitor cells and cells of the CNS. Also acts as a myokine. It is discharged into the bloodstream after muscle contraction and acts to increase the breakdown of fats and to improve insulin resistance.
疾病相关	Genetic variations in IL6 are associated with susceptibility to rheumatoid arthritis systemic juvenile (RASJ) [MIM:604302]. An inflammatory articular disorder with systemic-onset beginning before the age of 16. It represents a subgroup of juvenile arthritis associated with severe extraarticular features and occasionally fatal complications. During active phases of the disorder, patients display a typical daily spiking fever, an evanescent macular rash, lymphadenopathy, hepatosplenomegaly, serositis, myalgia and arthritis. Note=A IL6 promoter polymorphism is associated with a lifetime risk of development of Kaposi sarcoma in HIV-infected men.
序列相似性	Belongs to the IL-6 superfamily.
翻译后修饰	N- and O-glycosylated.
细胞定位	Secreted.

图片



**All lanes :** Anti-IL-6 antibody [EPR20653] (ab214429) at 1/1000 dilution

**Lane 1 :** Wild-type A549 Brefeldin A ([ab120299](#))-treated (5ug/ml, 4h) cell lysate

**Lane 2 :** Wild-type A549 IL-1 $\beta$  ([ab259387](#)) (20 ng/ml, 24h) and Brefeldin A ([ab120299](#))-treated (5 ug/ml for the last 4h) cell lysate

**Lane 3 :** IL-6 knockout A549 Brefeldin A ([ab120299](#))-treated (5ug/ml, 4h) cell lysate

**Lane 4 :** IL-6 knockout A549 IL-1 $\beta$  ([ab259387](#)) (20 ng/ml, 24h) and Brefeldin A ([ab120299](#))-treated (5 ug/ml for the last 4h) cell lysate

Lysates/proteins at 30  $\mu$ g per lane.

Performed under reducing conditions.

**Predicted band size:** 23 kDa

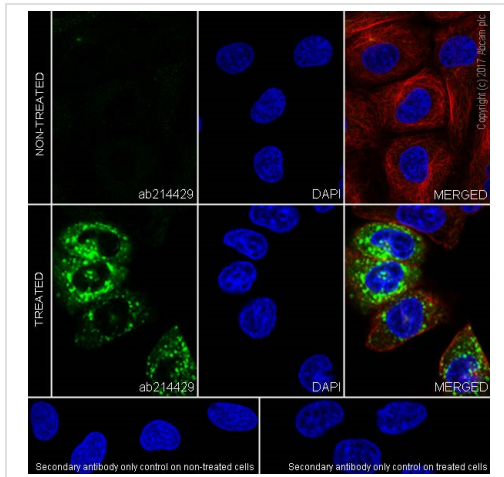
**Observed band size:** 25 kDa

**Additional bands at:** 35 kDa (possible non-specific binding)

**Lanes 1 - 4:** Merged signal (red and green). Green - ab214429 observed at 25 kDa. Red - loading control [ab7291](#) (Mouse anti-Alpha Tubulin [DM1A]) observed at 55kDa.

ab214429 was shown to react with IL-6 in wild-type A549 cells in western blot with loss of signal observed in IL-6 knockout cell line [ab273751](#) (knockout cell lysate [ab275501](#)). Wild-type and IL-6 knockout A549 cell lysates were subjected to SDS-PAGE.

Membranes were blocked in fluorescent western blot (TBS-based) blocking solution before incubation with ab214429 and [ab7291](#) (Mouse anti-Alpha Tubulin [DM1A]) overnight at 4°C at a 1 in 1000 Dilution and a 1 in 20000 dilution respectively. Blots were incubated with Goat anti-Rabbit IgG H&L (IRDye® 800CW) preabsorbed ([ab216773](#)) and Goat anti-Mouse IgG H&L (IRDye® 680RD) preabsorbed ([ab216776](#)) secondary antibodies at 1 in 20000 dilution for 1 hour at room temperature before imaging.

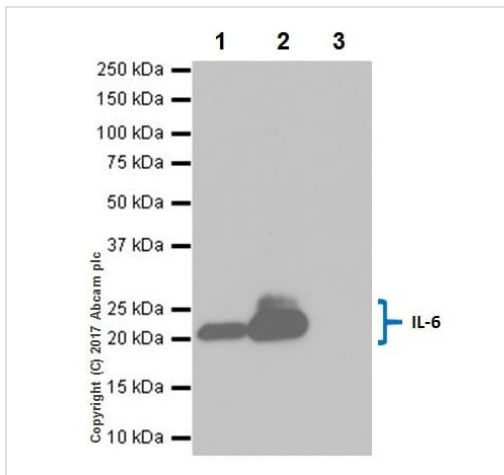


Immunocytochemistry/ Immunofluorescence - Anti-IL-6 antibody [EPR20653] (ab214429)

Immunofluorescent analysis of 4% paraformaldehyde-fixed, 0.1% Triton X-100 permeabilized HUVEC (human umbilical vein endothelial cell line) cells, untreated or treated with Lipopolysaccharides (LPS) (0.5 µg/ml 24 hours) and Brefeldin A (BFA) (300 ng/ml 20 hours), labeling IL6 with ab214429 at 1/500 dilution, followed by Goat Anti-Rabbit IgG H&L (Alexa Fluor® 488) (**ab150077**) secondary antibody at 1/1000 dilution (green). Confocal image showing the cytoplasmic expression increased on HUVEC cells treated with Lipopolysaccharides (LPS) (0.5 µg/ml, 24 hours) and Brefeldin A (BFA) (300 ng/ml, 20 hours).

The nuclear counter stain is DAPI (blue). Tubulin is detected with Anti-alpha Tubulin antibody [DM1A] - Microtubule Marker (Alexa Fluor® 594) (**ab195889**) (red) at 1/200 dilution.

Secondary antibody only control: Used PBS instead of primary antibody, secondary antibody is Goat Anti-Rabbit IgG H&L (Alexa Fluor® 488) (**ab150077**) secondary antibody at 1/1000 dilution.



Immunoprecipitation - Anti-IL-6 antibody [EPR20653] (ab214429)

IL6 was immunoprecipitated from 0.35 mg of HUVEC (human umbilical vein endothelial cell line) treated with Lipopolysaccharides (LPS) and Brefeldin A (BFA) whole cell lysate with ab214429 at 1/30 dilution. Western blot was performed from the immunoprecipitate using ab214429 at 1/1,000 dilution. VeriBlot for IP Detection Reagent (HRP) (**ab131366**), was used for detection at 1/10,000 dilution

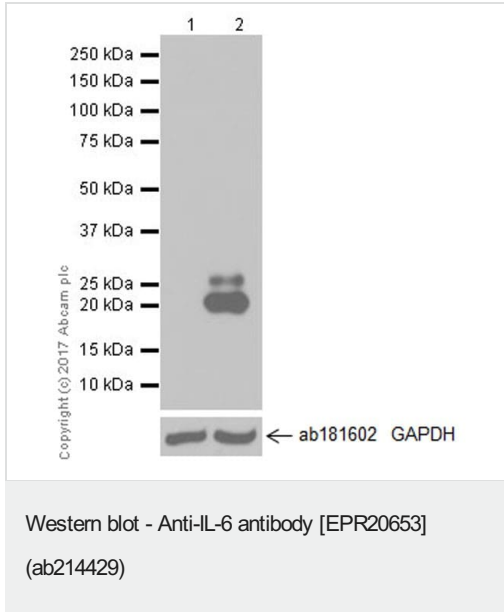
Lane 1: HUVEC treated with 0.5 µg/ml LPS for 24 hours and 300 ng/ml BFA for 20 hours whole cell lysate 10 µg (Input).

Lane 2: ab214429 IP in HUVEC treated with 0.5 µg/ml LPS for 24 hours and 300 ng/ml BFA for 20 hours whole cell lysate (+).

Lane 3: Rabbit monoclonal IgG (**ab172730**) instead of ab214429 in HUVEC treated with 0.5 µg/ml LPS for 24 hours and 300 ng/ml BFA for 20 hours whole cell lysate (-).

Blocking/Dilution buffer: 5% NFDM/TBST.

Exposure time: 3 minutes.



**All lanes :** Anti-IL-6 antibody [EPR20653] (ab214429) at 1/1000 dilution

**Lane 1 :** Untreated HUVEC (human umbilical vein endothelial cell line) whole cell lysate

**Lane 2 :** HUVEC treated with 0.5 µg/ml Lipopolysaccharides (LPS) for 24 hours and 300 ng/ml Brefeldin A (BFA) for 20 hours, whole cell lysate

Lysates/proteins at 10 µg per lane.

#### Secondary

**All lanes :** Goat Anti-Rabbit IgG H&L (HRP) ([ab97051](#)) at 1/100000 dilution

Developed using the ECL technique.

**Predicted band size:** 23 kDa

**Observed band size:** 21-28 kDa

**Exposure time:** 30 seconds

Blocking/Dilution buffer: 5% NFDm/TBST.

The MW observed is consistent with the literature (PMID:2523818, PMID: 2783321).

### Why choose a recombinant antibody?



**Research with confidence**  
Consistent and reproducible results



**Long-term and scalable supply**  
Recombinant technology



**Success from the first experiment**  
Confirmed specificity



**Ethical standards compliant**  
Animal-free production

Anti-IL-6 antibody [EPR20653] (ab214429)

**Please note:** All products are "FOR RESEARCH USE ONLY. NOT FOR USE IN DIAGNOSTIC PROCEDURES"

### Our Abpromise to you: Quality guaranteed and expert technical support

- Replacement or refund for products not performing as stated on the datasheet
- Valid for 12 months from date of delivery
- Response to your inquiry within 24 hours
- We provide support in Chinese, English, French, German, Japanese and Spanish
- Extensive multi-media technical resources to help you
- We investigate all quality concerns to ensure our products perform to the highest standards

If the product does not perform as described on this datasheet, we will offer a refund or replacement. For full details of the Abpromise, please visit <https://www.abcam.cn/abpromise> or contact our technical team.

### Terms and conditions

- Guarantee only valid for products bought direct from Abcam or one of our authorized distributors