

Anti-IL-6 antibody [1.2-2B11-2G10] ab9324

★★★★★ [21 Abreviews](#) [265 References](#) [4 图像](#)

概述

| | |
|-------|--|
| 产品名称 | Anti-IL-6抗体[1.2-2B11-2G10] |
| 描述 | 小鼠单克隆抗体[1.2-2B11-2G10] to IL-6 |
| 宿主 | Mouse |
| 经测试应用 | 适用于: IHC-P, Sandwich ELISA, WB |
| 种属反应性 | 与反应: Rat, Human |
| 免疫原 | Recombinant full length protein corresponding to Human IL-6 aa 29-212. (Peptide available as ab9627). Database link: P05231 |
| 阳性对照 | IHC-P: Human liver tumor and prostate tumor tissues; WB: Human spleen and lung tissue lysates, Rat spleen and lung tissue lysates, Recombinant human IL6 protein (ab9627). |
| 常规说明 | Although some customers have been successful in IHC we no longer batch test in this application. The Life Science industry has been in the grips of a reproducibility crisis for a number of years. Abcam is leading the way in addressing this with our range of recombinant monoclonal antibodies and knockout edited cell lines for gold-standard validation. Please check that this product meets your needs before purchasing. If you have any questions, special requirements or concerns, please send us an inquiry and/or contact our Support team ahead of purchase. Recommended alternatives for this product can be found below, along with publications, customer reviews and Q&As |

性能

| | |
|------|--|
| 形式 | Lyophilized:Reconstitute with 500µl of sterile water. Please note that if you receive this product in liquid form it has already been reconstituted as described and no further reconstitution is necessary. |
| 存放说明 | Shipped at 4°C. Store at +4°C short term (1-2 weeks). Upon delivery aliquot. Store at -20°C long term. |
| 纯度 | Protein A purified |
| 克隆 | 单克隆 |
| 克隆编号 | 1.2-2B11-2G10 |
| 同种型 | IgG2a |

应用

The Abpromise guarantee **Abpromise™**承诺保证使用ab9324于以下的经测试应用

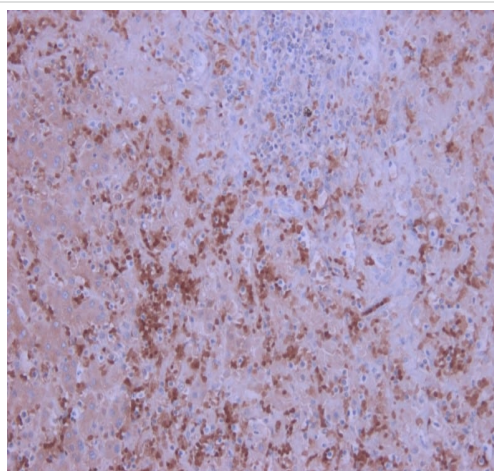
“应用说明”部分 下显示的仅为推荐的起始稀释度;实际最佳的稀释度/浓度应由使用者检定。

| 应用 | Ab评论 | 说明 |
|----------------|------------|---|
| IHC-P | ★★★★★ (12) | Use a concentration of 1 µg/ml. Perform heat mediated antigen retrieval before commencing with IHC staining protocol. |
| Sandwich ELISA | | Use at an assay dependent concentration. In a sandwich ELISA (assuming 100µl/well), a concentration of 1.0-2.0 µg/ml of this antibody will detect at least 1000pg/ml of Recombinant Human IL-6 when used with ab271236 detection antibody at a concentration of approximately 0.10-0.20 µg/ml. |
| WB | ★★★★★ (3) | Use at an assay dependent concentration. To detect human IL-6 by Western blot analysis this antibody can be used at a concentration of 0.50-1.0 µg/mL. When used in conjunction with compatible secondary reagents the detection limit for recombinant human IL-6 is 1.0-2.0 ng/lane, under reducing conditions and non-reducing conditions. |

靶标

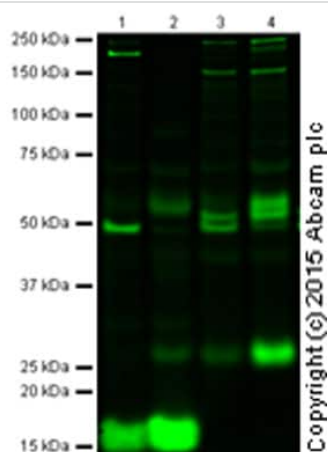
| | |
|-------|--|
| 功能 | Cytokine with a wide variety of biological functions. It is a potent inducer of the acute phase response. Plays an essential role in the final differentiation of B-cells into Ig-secreting cells Involved in lymphocyte and monocyte differentiation. It induces myeloma and plasmacytoma growth and induces nerve cells differentiation Acts on B-cells, T-cells, hepatocytes, hematopoietic progenitor cells and cells of the CNS. Also acts as a myokine. It is discharged into the bloodstream after muscle contraction and acts to increase the breakdown of fats and to improve insulin resistance. |
| 疾病相关 | Genetic variations in IL6 are associated with susceptibility to rheumatoid arthritis systemic juvenile (RASJ) [MIM:604302]. An inflammatory articular disorder with systemic-onset beginning before the age of 16. It represents a subgroup of juvenile arthritis associated with severe extraarticular features and occasionally fatal complications. During active phases of the disorder, patients display a typical daily spiking fever, an evanescent macular rash, lymphadenopathy, hepatosplenomegaly, serositis, myalgia and arthritis. Note=A IL6 promoter polymorphism is associated with a lifetime risk of development of Kaposi sarcoma in HIV-infected men. |
| 序列相似性 | Belongs to the IL-6 superfamily. |
| 翻译后修饰 | N- and O-glycosylated. |
| 细胞定位 | Secreted. |

图片



Immunohistochemistry (Formalin/PFA-fixed paraffin-embedded sections) - Anti-IL-6 antibody [1.2-2B11-2G10] (ab9324)

Immunohistochemistry (Formalin/PFA-fixed paraffin-embedded sections) analysis of human liver tumor tissue labelling IL-6 with ab9324 at 1 µg/mL (45 minute incubation at room temperature). Heat mediated antigen retrieval was performed using a buffer at pH 6. An HRP-labeled polymer detection system was used with a DAB chromogen.



Western blot - Anti-IL-6 antibody [1.2-2B11-2G10] (ab9324)

All lanes : Anti-IL-6 antibody [1.2-2B11-2G10] (ab9324) at 1/2000 dilution

Lane 1 : Human Spleen

Lane 2 : Human Lung

Lane 3 : Rat Spleen

Lane 4 : Rat Lung

Lysates/proteins at 20 µg per lane.

Secondary

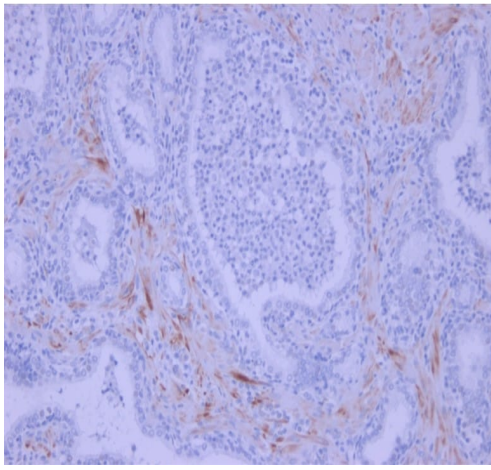
All lanes : 800CW Goat Anti-Mouse IgG at 1/10000 dilution

Performed under reducing conditions.

Observed band size: 17,25 kDa

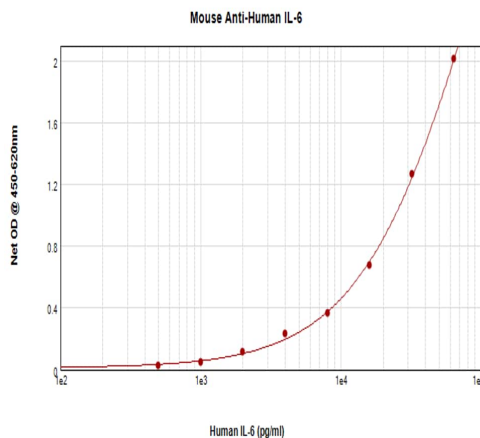
Additional bands at: 50 kDa (possible multimer)

This antibody was raised against an immunogen that is predicted to recognize the glycosylated form of IL6 as well as the IL6delta4 splice variant. The predicted molecular weights are 25 kDa and 17 kDa respectively. The band observed at 50 kDa may represent multimers of IL6 as reported in the literature.



Immunohistochemistry (Formalin/PFA-fixed paraffin-embedded sections) - Anti-IL-6 antibody [1.2-2B11-2G10] (ab9324)

Immunohistochemistry (Formalin/PFA-fixed paraffin-embedded sections) analysis of human prostate tumor tissue labelling IL-6 with ab9324 at 1 µg/mL (45 minute incubation at room temperature). Heat mediated antigen retrieval was performed using a buffer at pH 6. An HRP-labeled polymer detection system was used with a DAB chromogen.



Sandwich ELISA - Anti-IL-6 antibody [1.2-2B11-2G10] (ab9324)

ab9324 detecting IL-6 by sandwich ELISA.

Please note: All products are "FOR RESEARCH USE ONLY. NOT FOR USE IN DIAGNOSTIC PROCEDURES"

Our Abpromise to you: Quality guaranteed and expert technical support

- Replacement or refund for products not performing as stated on the datasheet
- Valid for 12 months from date of delivery
- Response to your inquiry within 24 hours
- We provide support in Chinese, English, French, German, Japanese and Spanish
- Extensive multi-media technical resources to help you
- We investigate all quality concerns to ensure our products perform to the highest standards

If the product does not perform as described on this datasheet, we will offer a refund or replacement. For full details of the Abpromise, please visit <https://www.abcam.cn/abpromise> or contact our technical team.

Terms and conditions

- Guarantee only valid for products bought direct from Abcam or one of our authorized distributors