

Anti-IL-23 antibody ab45420

★★★★★ [4 Abreviews](#) [30 References](#) [6 图像](#)

概述

产品名称	Anti-IL-23抗体
描述	兔多克隆抗体to IL-23
宿主	Rabbit
经测试应用	适用于: ICC/IF, IHC-P, WB
种属反应性	与反应: Human
免疫原	Synthetic peptide corresponding to Human IL-23 (C terminal). 14 amino acid peptide located within the last 50 amino acids of IL23.
阳性对照	Raji cells and Raji cell lysates.
常规说明	<p>The Life Science industry has been in the grips of a reproducibility crisis for a number of years. Abcam is leading the way in addressing this with our range of recombinant monoclonal antibodies and knockout edited cell lines for gold-standard validation. Please check that this product meets your needs before purchasing.</p> <p>If you have any questions, special requirements or concerns, please send us an inquiry and/or contact our Support team ahead of purchase. Recommended alternatives for this product can be found below, along with publications, customer reviews and Q&As</p>

性能

形式	Liquid
存放说明	Shipped at 4°C. Store at +4°C short term (1-2 weeks). Upon delivery aliquot. Store at -20°C. Avoid freeze / thaw cycle.
存储溶液	<p>pH: 7.2</p> <p>Preservative: 0.02% Sodium azide</p> <p>Constituent: PBS</p>
纯度	Immunogen affinity purified
克隆	多克隆
同种型	IgG

应用

The Abpromise guarantee

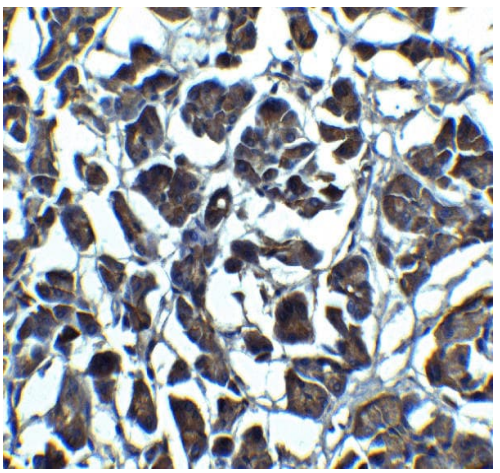
Abpromise™承诺保证使用ab45420于以下的经测试应用

“应用说明”部分 下显示的仅为推荐的起始稀释度;实际最佳的稀释度/浓度应由使用者检定。

应用	Ab评论	说明
ICC/IF	★★★★★ (2)	Use a concentration of 10 µg/ml.
IHC-P	★★★★★ (1)	Use a concentration of 5 µg/ml.
WB	★★★★★ (1)	Use a concentration of 1 - 4 µg/ml. Detects a band of approximately 24 kDa (predicted molecular weight: 21 kDa).

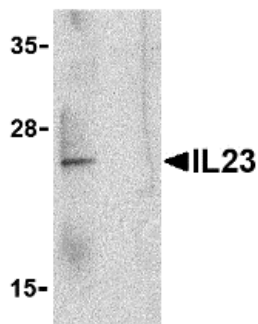
靶标	
功能	Associates with IL12B to form the IL-23 interleukin, an heterodimeric cytokine which functions in innate and adaptive immunity. IL-23 may constitute with IL-17 an acute response to infection in peripheral tissues. IL-23 binds to an heterodimeric receptor complex composed of IL12RB1 and IL23R, activates the Jak-Stat signaling cascade, stimulates memory rather than naive T-cells and promotes production of proinflammatory cytokines. IL-23 induces autoimmune inflammation and thus may be responsible for autoimmune inflammatory diseases and may be important for tumorigenesis.
组织特异性	Secreted by activated dendritic and phagocytic cells and keratinocytes. Also expressed by dermal Langerhans cells (at protein level).
序列相似性	Belongs to the IL-6 superfamily.
发展阶段	Expressed by newborns dendritic cells.
细胞定位	Secreted. Secreted upon association with IL12B.

图片



Immunohistochemistry of IL-23 in human pancreas tissue with ab45420 at 5 µg/mL.

Immunohistochemistry (Formalin/PFA-fixed paraffin-embedded sections) - Anti-IL-23 antibody (ab45420)



Western blot - Anti-IL-23 antibody (ab45420)

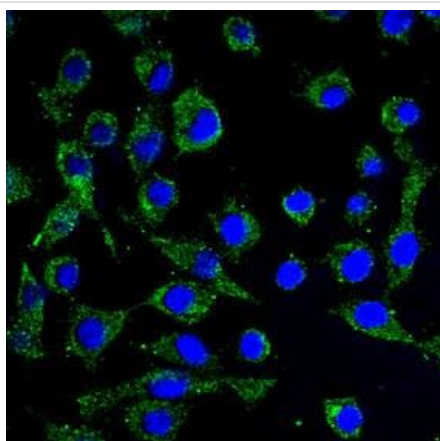
All lanes : Anti-IL-23 antibody (ab45420) at 1 µg/ml

Lane 1 : Raji lysate

Lane 2 : Raji lysate with IL23 P19 blocking peptide

Predicted band size: 21 kDa

Observed band size: 24 kDa



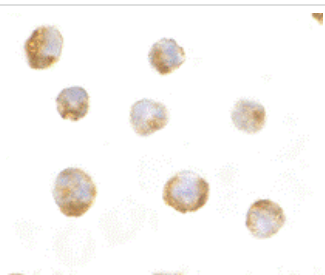
Immunocytochemistry/ Immunofluorescence - Anti-IL23 antibody (ab45420)

This image is courtesy of an anonymous Abreview

Ab45420 staining IL23 in Mouse bone marrow derived

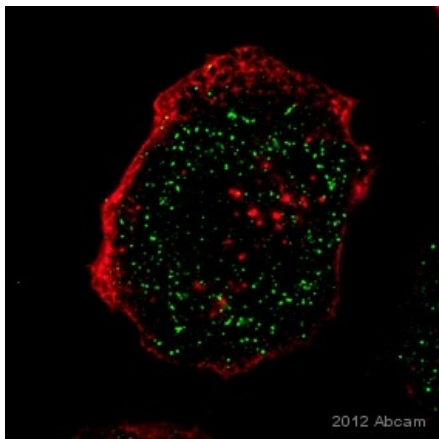
macrophages by ICC/IF

(Immunocytochemistry/Immunofluorescence). Cells were fixed with paraformaldehyde, permeabilized with 0.1% Triton X100 and blocked with 5% serum for 1 hour at 20°C. Samples were incubated with primary antibody at 1/200 dilution in 5% goat serum in PBS for 1 hour at 20°C. An Alexa Fluor® 488 goat anti-rabbit was used as the secondary antibody.



Immunocytochemistry/ Immunofluorescence - Anti-IL-23 antibody (ab45420)

ab45420 at 10 µg/ml staining IL23 in Raji cells by ICC/IF



Immunocytochemistry/ Immunofluorescence - Anti-IL-23 antibody (ab45420)

This image is courtesy of an Abreview submitted by Dr James Harris

ab45420 staining IL23 P19 (green) in Human THP-1 cells by Immunocytochemistry/ Immunofluorescence.

Cells were fixed with paraformaldehyde, permeabilized with 0.1% Triton X-100 and blocked with 5% serum for 1 hour at 20°C.

Samples were incubated with primary antibody (1/200 in 5% goat serum + 1 BSA) for 1 hour at 20°C. An AlexaFluor®488-conjugated goat anti-rabbit polyclonal IgG (1/500) was used as the secondary antibody.

Immunocytochemistry/ Immunofluorescence - Anti-IL-23 antibody (ab45420)

Immunofluorescence of IL-23 in Raji cells using ab45420 at 20 ug/ml.

Please note: All products are "FOR RESEARCH USE ONLY. NOT FOR USE IN DIAGNOSTIC PROCEDURES"

Our Abpromise to you: Quality guaranteed and expert technical support

- Replacement or refund for products not performing as stated on the datasheet
- Valid for 12 months from date of delivery
- Response to your inquiry within 24 hours
- We provide support in Chinese, English, French, German, Japanese and Spanish
- Extensive multi-media technical resources to help you
- We investigate all quality concerns to ensure our products perform to the highest standards

If the product does not perform as described on this datasheet, we will offer a refund or replacement. For full details of the Abpromise, please visit <https://www.abcam.cn/abpromise> or contact our technical team.

Terms and conditions

- Guarantee only valid for products bought direct from Abcam or one of our authorized distributors