

### Anti-IL-2 Receptor alpha antibody [IL2R.1] ab9496

★★★★★ [1 Abreviews](#) [2 References](#) [3 图像](#)

#### 概述

产品名称	Anti-IL-2 Receptor alpha抗体[IL2R.1]
描述	小鼠单克隆抗体[IL2R.1] to IL-2 Receptor alpha
宿主	Mouse
特异性	This antibody is specific to a 55 kDa protein known as interleukin 2-receptor (IL-2R alpha). IL-2R alpha is over expressed on the surface of activated T cell, HTLV-1 or HTLV-2 positive T cell lines and moderately expressed on activated B cells, NK-cells and macrophages.
经测试应用	适用于: Flow Cyt, IHC-P
种属反应性	与反应: Human
免疫原	Recombinant full length protein corresponding to Human IL-2 Receptor alpha. Database link: <a href="#">P01589</a>
阳性对照	Tonsil.
常规说明	<p>The Life Science industry has been in the grips of a reproducibility crisis for a number of years. Abcam is leading the way in addressing this with our range of recombinant monoclonal antibodies and knockout edited cell lines for gold-standard validation. Please check that this product meets your needs before purchasing.</p> <p>If you have any questions, special requirements or concerns, please send us an inquiry and/or contact our Support team ahead of purchase. Recommended alternatives for this product can be found below, along with publications, customer reviews and Q&amp;As</p>

#### 性能

形式	Liquid
存放说明	Shipped at 4°C. Store at +4°C short term (1-2 weeks). Store at -20°C or -80°C. Avoid freeze / thaw cycle.
存储溶液	pH: 7.30 Preservative: 0.1% Sodium azide Constituent: 0.1% Tween
纯度	Tissue culture supernatant
克隆	单克隆
克隆编号	IL2R.1

骨髓瘤	unknown
同种型	IgG1
轻链类型	kappa

应用

**The Abpromise guarantee**      **Abpromise™**承诺保证使用ab9496于以下的经测试应用

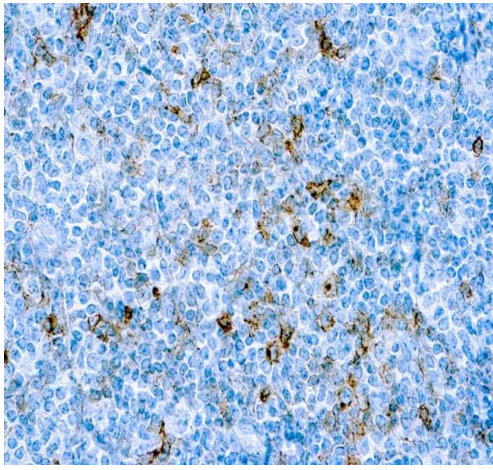
“应用说明”部分 下显示的仅为推荐的起始稀释度;实际最佳的稀释度/浓度应由使用者检定。

应用	Ab评论	说明
Flow Cyt		1/50. <b>ab170190</b> - Mouse monoclonal IgG1, is suitable for use as an isotype control with this antibody.
IHC-P	★★★★★ (1)	1/25 - 1/75. Perform heat mediated antigen retrieval before commencing with IHC staining protocol.

靶标

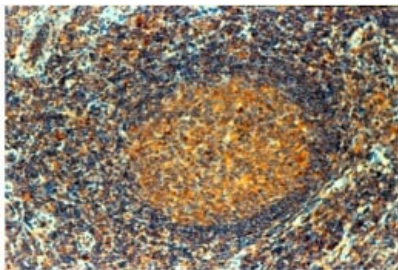
功能	Receptor for interleukin-2.
疾病相关	Genetic variations in IL2RA are associated with susceptibility to diabetes mellitus insulin-dependent type 10 (IDDM10) [MIM:601942]. A multifactorial disorder of glucose homeostasis that is characterized by susceptibility to ketoacidosis in the absence of insulin therapy. Clinical fetaures are polydipsia, polyphagia and polyuria which result from hyperglycemia-induced osmotic diuresis and secondary thirst. These derangements result in long-term complications that affect the eyes, kidneys, nerves, and blood vessels.
序列相似性	Contains 2 Sushi (CCP/SCR) domains.
细胞定位	Membrane.

图片



Immunohistochemistry (Formalin/PFA-fixed paraffin-embedded sections) - Anti-IL-2 Receptor alpha antibody [IL2R.1] (ab9496)

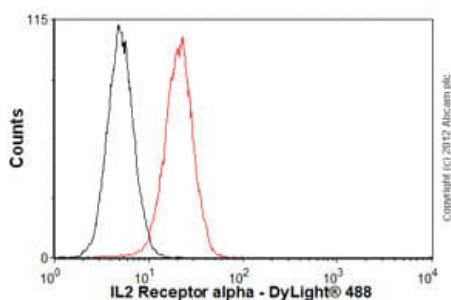
Formalin-fixed, paraffin-embedded human tonsil tissue stained for IL-2 Receptor alpha using ab9496 at 1/50 dilution in immunohistochemical analysis. Antigen retrieval with citrate buffer pH 6.0.



Immunohistochemistry (Formalin/PFA-fixed paraffin-embedded sections) - Anti-IL-2 Receptor alpha antibody [IL2R.1] (ab9496)

ab9496 - immunohistochemistry

Formalin fixed paraffin embedded human tonsil stained with CD25, using ABC and AEC chromagen.



Flow Cytometry - Anti-IL-2 Receptor alpha antibody [IL2R.1] (ab9496)

Overlay histogram showing Jurkat cells stained with ab9496 (red line). The cells were fixed with 80% methanol (5 min) and incubated in 1x PBS / 10% normal goat serum / 0.3M glycine to block non-specific protein-protein interactions. The cells were then incubated with the antibody (ab9496, 1/50 dilution) for 30 min at 22°C. The secondary antibody used was DyLight® 488 goat anti-mouse IgG (H+L) ([ab96879](#)) at 1/500 dilution for 30 min at 22°C. Isotype control antibody (black line) was mouse IgG1 [ICIGG1] ([ab91353](#), 2µg/1x10<sup>6</sup> cells) used under the same conditions. Acquisition of >5,000 events was performed.

Please note that Abcam do not have any data for use of this antibody on non-fixed cells. We welcome any customer feedback.

**Please note:** All products are "FOR RESEARCH USE ONLY. NOT FOR USE IN DIAGNOSTIC PROCEDURES"

### **Our Abpromise to you: Quality guaranteed and expert technical support**

---

- Replacement or refund for products not performing as stated on the datasheet
- Valid for 12 months from date of delivery
- Response to your inquiry within 24 hours
  
- We provide support in Chinese, English, French, German, Japanese and Spanish
- Extensive multi-media technical resources to help you
- We investigate all quality concerns to ensure our products perform to the highest standards

If the product does not perform as described on this datasheet, we will offer a refund or replacement. For full details of the Abpromise, please visit <https://www.abcam.cn/abpromise> or contact our technical team.

### **Terms and conditions**

---

- Guarantee only valid for products bought direct from Abcam or one of our authorized distributors