

Anti-IL-15RA antibody [JM7A4] ab91270

3 References [1 图像](#)

概述

产品名称	Anti-IL-15RA抗体[JM7A4]
描述	小鼠单克隆抗体[JM7A4] to IL-15RA
宿主	Mouse
经测试应用	适用于: WB, IP, Flow Cyt
种属反应性	与反应: Human
免疫原	Recombinant full length protein corresponding to Human IL-15RA.
阳性对照	LPS and IFN gamma stimulated PBMCs
常规说明	<p>The Life Science industry has been in the grips of a reproducibility crisis for a number of years. Abcam is leading the way in addressing this with our range of recombinant monoclonal antibodies and knockout edited cell lines for gold-standard validation. Please check that this product meets your needs before purchasing.</p> <p>If you have any questions, special requirements or concerns, please send us an inquiry and/or contact our Support team ahead of purchase. Recommended alternatives for this product can be found below, along with publications, customer reviews and Q&As</p>

性能

形式	Liquid
存放说明	Shipped at 4°C. Store at +4°C short term (1-2 weeks). Store at -20°C or -80°C. Avoid freeze / thaw cycle.
存储溶液	<p>pH: 7.20</p> <p>Preservative: 0.09% Sodium azide</p> <p>Constituent: PBS</p>
纯度	Protein A purified
纯化说明	ab91270 is affinity purified
克隆	单克隆
克隆编号	JM7A4
同种型	IgG2b

The Abpromise guarantee **Abpromise™**承诺保证使用ab91270于以下的经测试应用

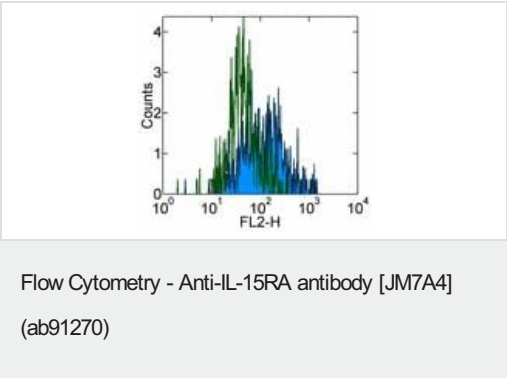
“应用说明”部分 下显示的仅为推荐的起始稀释度;实际最佳的稀释度/浓度应由使用者检定。

应用	Ab评论	说明
WB		Use at an assay dependent concentration.
IP		Use at an assay dependent concentration.
Flow Cyt		Use 0.5µg for 10 ⁶ cells. ab170192 - Mouse monoclonal IgG2b, is suitable for use as an isotype control with this antibody.

靶标

功能	Receptor for interleukin-15. Expression of different isoforms may alter or interfere with signal transduction. Isoform 5, isoform 6, isoform 7 and isoform 8 do not bind IL15. Signal transduction involves STAT3, STAT5, STAT6, JAK2 (By similarity) and SYK.
组织特异性	Isoform 1, isoform 3, isoform 4, isoform 5, isoform 6, isoform 7, isoform 8 and isoform 9 are widely expressed. Expressed in fetal brain with higher expression in the hippocampus and cerebellum than in cortex and thalamus. Higher levels of soluble sIL-15RA form in comparison with membrane-bound forms is present in all brain structures.
序列相似性	Contains 1 Sushi (CCP/SCR) domain.
翻译后修饰	A soluble form (sIL-15RA) arises from proteolytic shedding of the membrane-anchored receptor. The cleavage involves ADAM17/TACE (By similarity). It also binds IL-15 and thus interferes with IL-15 binding to the membrane receptor. Phosphorylated by activated SYK. N-glycosylated and O-glycosylated.
细胞定位	Secreted > extracellular space; Membrane. Nucleus membrane. Mainly found associated with the nuclear membrane and Endoplasmic reticulum membrane. Golgi apparatus membrane. Cytoplasmic vesicle membrane. Membrane. Isoform 5, isoform 6, isoform 7 and isoform 8 are associated with endoplasmic reticulum, Golgi and cytoplasmic vesicles, but not with the nuclear membrane.

图片



ab91270 staining IL-15RA in normal Human PBMCs by Flow cytometry.

Normal Human PBMCs were isolated, and cultured in standard conditions for 3 hours. Non adherent cells were removed from culture, and remaining cells were stimulated with LPS and IFN- γ for 24 hours.

Open/green histogram; stained with 0.25 μ g of Purified Mouse IgG2b Isotype Control

Closed/blue histogram; stained with 0.25 μ g of ab91270.

Detection utilised Biotin Anti-Mouse IgG and SAV-PE.
Cells in the large scatter population were used for analysis.

Please note: All products are "FOR RESEARCH USE ONLY. NOT FOR USE IN DIAGNOSTIC PROCEDURES"

Our Abpromise to you: Quality guaranteed and expert technical support

- Replacement or refund for products not performing as stated on the datasheet
- Valid for 12 months from date of delivery
- Response to your inquiry within 24 hours
- We provide support in Chinese, English, French, German, Japanese and Spanish
- Extensive multi-media technical resources to help you
- We investigate all quality concerns to ensure our products perform to the highest standards

If the product does not perform as described on this datasheet, we will offer a refund or replacement. For full details of the Abpromise, please visit <https://www.abcam.cn/abpromise> or contact our technical team.

Terms and conditions

- Guarantee only valid for products bought direct from Abcam or one of our authorized distributors