

# Anti-IL-13 receptor alpha 1 antibody ab108499

★★★★★ [1 Abreviews](#) [2 References](#) [2 图像](#)

### 概述

产品名称	Anti-IL-13 receptor alpha 1抗体
描述	兔多克隆抗体到 IL-13 receptor alpha 1
宿主	Rabbit
经测试应用	适用于: WB, IHC-P
种属反应性	与反应: Human 预测可用于: Mouse, Rat 
免疫原	Recombinant fragment corresponding to Human IL-13 receptor alpha 1 aa 70-304. Database link: <a href="#">BC015768</a>
阳性对照	A549 cell lysate. Human fetal heart tissue.
常规说明	<p>The Life Science industry has been in the grips of a reproducibility crisis for a number of years. Abcam is leading the way in addressing this with our range of recombinant monoclonal antibodies and knockout edited cell lines for gold-standard validation. Please check that this product meets your needs before purchasing.</p> <p>If you have any questions, special requirements or concerns, please send us an inquiry and/or contact our Support team ahead of purchase. Recommended alternatives for this product can be found below, along with publications, customer reviews and Q&amp;As</p>

### 性能

形式	Lyophilized:Reconstitute in 200ul sterile H2O.
存放说明	Shipped at 4°C. Upon delivery aliquot and store at -20°C. Avoid freeze / thaw cycles.
存储溶液	Preservative: 0.02% Sodium azide Constituent: 1% BSA
纯度	Immunogen affinity purified
克隆	多克隆
同种型	IgG

### 应用

The Abpromise guarantee

[Abpromise™](#) 承诺保证使用ab108499于以下的经测试应用

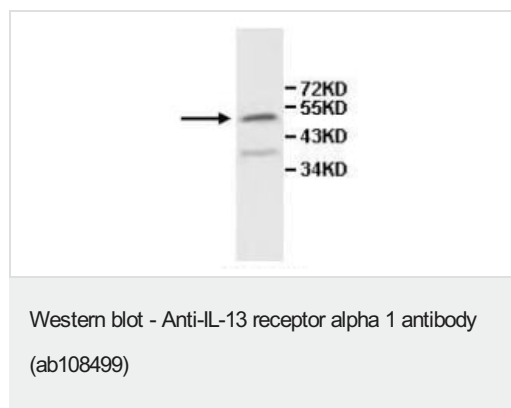
“应用说明”部分 下显示的仅为推荐的起始稀释度;实际最佳的稀释度/浓度应由使用者检定。

应用	Ab评论	说明
WB	★★★★★ (1)	1/500 - 1/1000. Predicted molecular weight: 49 kDa.
IHC-P		1/100 - 1/500.

## 靶标

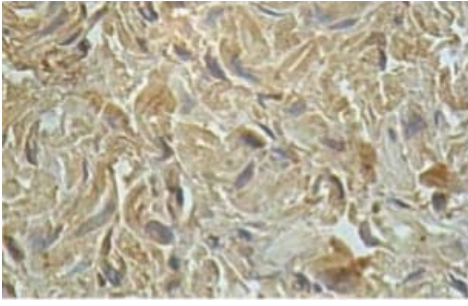
<b>功能</b>	Binds with low affinity to interleukin-13 (IL13). Together with IL4RA can form a functional receptor for IL13. Also serves as an alternate accessory protein to the common cytokine receptor gamma chain for interleukin-4 (IL4) signaling, but cannot replace the function of IL2RG in allowing enhanced interleukin-2 (IL2) binding activity.
<b>组织特异性</b>	Ubiquitous. Highest levels in heart, liver, skeletal muscle and ovary; lowest levels in brain, lung and kidney. Also found in B-cells, T-cells and endothelial cells.
<b>序列相似性</b>	Belongs to the type I cytokine receptor family. Type 5 subfamily.
<b>结构域</b>	The WSXWS motif appears to be necessary for proper protein folding and thereby efficient intracellular transport and cell-surface receptor binding. The box 1 motif is required for JAK interaction and/or activation.
<b>细胞定位</b>	Membrane.

## 图片



Anti-IL-13 receptor alpha 1 antibody (ab108499) at 1/500 dilution + A549 cell lysate

**Predicted band size: 49 kDa**



1/100 ab108499 staining IL13 receptor alpha 1 in formalin-fixed, paraffin-embedded Human fetal heart tissue.

Immunohistochemistry (Formalin/PFA-fixed paraffin-embedded sections) - Anti-IL-13 receptor alpha 1 antibody (ab108499)

**Please note:** All products are "FOR RESEARCH USE ONLY. NOT FOR USE IN DIAGNOSTIC PROCEDURES"

### **Our Abpromise to you: Quality guaranteed and expert technical support**

---

- Replacement or refund for products not performing as stated on the datasheet
- Valid for 12 months from date of delivery
- Response to your inquiry within 24 hours
- We provide support in Chinese, English, French, German, Japanese and Spanish
- Extensive multi-media technical resources to help you
- We investigate all quality concerns to ensure our products perform to the highest standards

If the product does not perform as described on this datasheet, we will offer a refund or replacement. For full details of the Abpromise, please visit <https://www.abcam.cn/abpromise> or contact our technical team.

### **Terms and conditions**

---

- Guarantee only valid for products bought direct from Abcam or one of our authorized distributors