

Anti-IL-12RB2 antibody ab96097

1 References [1 图像](#)

概述

产品名称	Anti-IL-12RB2抗体
描述	兔多克隆抗体to IL-12RB2
宿主	Rabbit
经测试应用	适用于: WB
种属反应性	与反应: Human
免疫原	Recombinant fragment corresponding to Human IL-12RB2 aa 323-665.
阳性对照	293T, H1299, HeLaS3, Molt 4, Raji; A431 or HepG2 whole cell lysate (ab7900)
常规说明	<p>The Life Science industry has been in the grips of a reproducibility crisis for a number of years. Abcam is leading the way in addressing this with our range of recombinant monoclonal antibodies and knockout edited cell lines for gold-standard validation. Please check that this product meets your needs before purchasing.</p> <p>If you have any questions, special requirements or concerns, please send us an inquiry and/or contact our Support team ahead of purchase. Recommended alternatives for this product can be found below, along with publications, customer reviews and Q&As</p>

性能

形式	Liquid
存放说明	Shipped at 4°C. Upon delivery aliquot and store at -20°C or -80°C. Avoid repeated freeze / thaw cycles.
存储溶液	<p>pH: 7.00</p> <p>Preservative: 0.01% Thimerosal (merthiolate)</p> <p>Constituents: 1.21% Tris, 0.75% Glycine, 10% Glycerol (glycerin, glycerine)</p>
纯度	Immunogen affinity purified
克隆	多克隆
同种型	IgG

应用

The Abpromise guarantee

Abpromise™ 承诺保证使用ab96097于以下的经测试应用

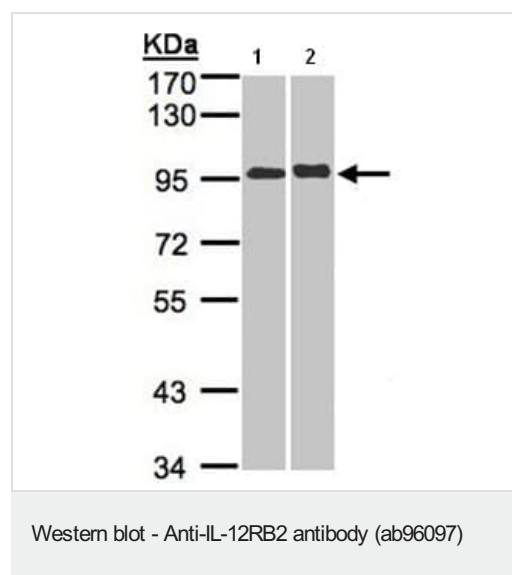
“应用说明”部分 下显示的仅为推荐的起始稀释度;实际最佳的稀释度/浓度应由使用者检定。

应用	Ab评论	说明
WB		1/500 - 1/3000. Predicted molecular weight: 97 kDa.

靶标

功能	Receptor for interleukin-12. This subunit is the signaling component coupling to the JAK2/STAT4 pathway. Promotes the proliferation of T-cells as well as NK cells. Induces the promotion of T-cells towards the Th1 phenotype by strongly enhancing IFN-gamma production.
组织特异性	Isoform 2 is expressed at similar levels in both naive and activated T-cells.
序列相似性	Belongs to the type I cytokine receptor family. Type 2 subfamily. Contains 5 fibronectin type-III domains.
发展阶段	Maximum levels in Th1 cells between day 3 and day 8 of activation.
结构域	The WSXWS motif appears to be necessary for proper protein folding and thereby efficient intracellular transport and cell-surface receptor binding. The box 1 motif is required for JAK interaction and/or activation.
翻译后修饰	On IL12 binding, phosphorylated on C-terminal tyrosine residues by JAK2. Phosphorylation on Tyr-800 is required for STAT4 binding and activation, and for SOCS3 binding.
细胞定位	Membrane.

图片



All lanes : Anti-IL-12RB2 antibody (ab96097) at 1/5000 dilution

Lane 1 : A431 whole cell lysate

Lane 2 : HepG2 whole cell lysate

Lysates/proteins at 30 µg per lane.

Predicted band size: 97 kDa

7.5% SDS PAGE

Please note: All products are "FOR RESEARCH USE ONLY. NOT FOR USE IN DIAGNOSTIC PROCEDURES"

Our Abpromise to you: Quality guaranteed and expert technical support

- Replacement or refund for products not performing as stated on the datasheet

- Valid for 12 months from date of delivery
- Response to your inquiry within 24 hours
- We provide support in Chinese, English, French, German, Japanese and Spanish
- Extensive multi-media technical resources to help you
- We investigate all quality concerns to ensure our products perform to the highest standards

If the product does not perform as described on this datasheet, we will offer a refund or replacement. For full details of the Abpromise, please visit <https://www.abcam.cn/abpromise> or contact our technical team.

Terms and conditions

- Guarantee only valid for products bought direct from Abcam or one of our authorized distributors