

### Anti-IL-12 p40 antibody ab77373

**1 References**   **1 图像**

#### 概述

产品名称	Anti-IL-12 p40抗体
描述	山羊多克隆抗体to IL-12 p40
宿主	Goat
经测试应用	适用于: WB
种属反应性	与反应: Rat
免疫原	Synthetic peptide corresponding to Mouse IL-12 p40 aa 211-222 (internal sequence). Sequence: C-EARQQNKYENYS

Database link: [NP\\_032378.1](#)

 [Run BLAST with](#)

 [Run BLAST with](#)

#### 常规说明

The Life Science industry has been in the grips of a reproducibility crisis for a number of years. Abcam is leading the way in addressing this with our range of recombinant monoclonal antibodies and knockout edited cell lines for gold-standard validation. Please check that this product meets your needs before purchasing.

If you have any questions, special requirements or concerns, please send us an inquiry and/or contact our Support team ahead of purchase. Recommended alternatives for this product can be found below, along with publications, customer reviews and Q&As

#### 性能

形式	Liquid
存放说明	Shipped at 4°C. Upon delivery aliquot and store at -20°C. Avoid repeated freeze / thaw cycles.
存储溶液	pH: 7.30 Preservative: 0.02% Sodium azide Constituents: 0.5% BSA, 99% Tris buffered saline
纯度	Immunogen affinity purified
纯化说明	ab77373 was purified from goat serum by ammonium sulphate precipitation followed by antigen affinity chromatography using the immunising peptide.
克隆	多克隆
同种型	IgG

## 应用

**The Abpromise guarantee**      **Abpromise™**承诺保证使用ab77373于以下的经测试应用

“应用说明”部分 下显示的仅为推荐的起始稀释度;实际最佳的稀释度/浓度应由使用者检定。

应用	Ab评论	说明
WB		

### 应用说明

Peptide ELISA: Antibody detection limit dilution 1/4000.

WB: Use at a concentration of 1 - 3 µg/ml. Detects a band of approximately 38 kDa (predicted molecular weight: 38 kDa).

Not yet tested in other applications.

Optimal dilutions/concentrations should be determined by the end user.

## 靶标

### 功能

Cytokine that can act as a growth factor for activated T and NK cells, enhance the lytic activity of NK/lymphokine-activated killer cells, and stimulate the production of IFN-gamma by resting PBMC.

Associates with IL23A to form the IL-23 interleukin, an heterodimeric cytokine which functions in innate and adaptive immunity. IL-23 may constitute with IL-17 an acute response to infection in peripheral tissues. IL-23 binds to an heterodimeric receptor complex composed of IL12RB1 and IL23R, activates the Jak-Stat signaling cascade, stimulates memory rather than naive T-cells and promotes production of proinflammatory cytokines. IL-23 induces autoimmune inflammation and thus may be responsible for autoimmune inflammatory diseases and may be important for tumorigenesis.

### 疾病相关

Defects in IL12B are a cause of mendelian susceptibility to mycobacterial disease (MSMD) [MIM:209950]; also known as familial disseminated atypical mycobacterial infection. This rare condition confers predisposition to illness caused by moderately virulent mycobacterial species, such as Bacillus Calmette-Guerin (BCG) vaccine and environmental non-tuberculous mycobacteria, and by the more virulent Mycobacterium tuberculosis. Other microorganisms rarely cause severe clinical disease in individuals with susceptibility to mycobacterial infections, with the exception of Salmonella which infects less than 50% of these individuals. The pathogenic mechanism underlying MSMD is the impairment of interferon-gamma mediated immunity, whose severity determines the clinical outcome. Some patients die of overwhelming mycobacterial disease with lepromatous-like lesions in early childhood, whereas others develop, later in life, disseminated but curable infections with tuberculoid granulomas. MSMD is a genetically heterogeneous disease with autosomal recessive, autosomal dominant or X-linked inheritance. Genetic variations in IL12B are a cause of susceptibility to psoriasis type 11 (PSORS11) [MIM:612599]. Psoriasis is a common, chronic inflammatory disease of the skin with multifactorial etiology. It is characterized by red, scaly plaques usually found on the scalp, elbows and knees. These lesions are caused by abnormal keratinocyte proliferation and infiltration of inflammatory cells into the dermis and epidermis.

### 序列相似性

Belongs to the type I cytokine receptor family. Type 3 subfamily.

Contains 1 fibronectin type-III domain.

## 翻译后修饰

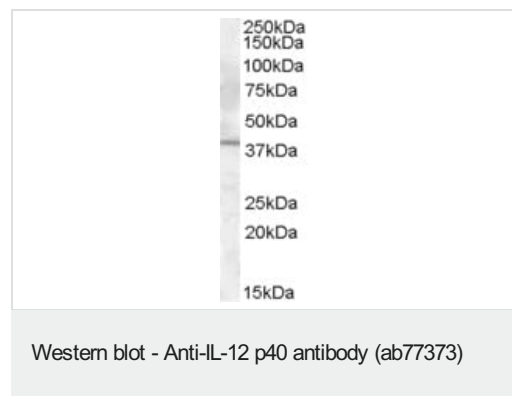
Contains 1 Ig-like C2-type (immunoglobulin-like) domain.

Known to be C-mannosylated in the recombinant protein; it is not yet known for sure if the wild-type protein is also modified.

## 细胞定位

Secreted.

## 图片



Anti-IL-12 p40 antibody (ab77373) at 1 µg/ml + Rat Liver lysate (in RIPA buffer) at 35 µg

**Predicted band size:** 38 kDa

**Observed band size:** 38 kDa

Primary incubation was 1 hour. Detected by chemiluminescence.

**Please note:** All products are "FOR RESEARCH USE ONLY. NOT FOR USE IN DIAGNOSTIC PROCEDURES"

## Our Abpromise to you: Quality guaranteed and expert technical support

- Replacement or refund for products not performing as stated on the datasheet
- Valid for 12 months from date of delivery
- Response to your inquiry within 24 hours
- We provide support in Chinese, English, French, German, Japanese and Spanish
- Extensive multi-media technical resources to help you
- We investigate all quality concerns to ensure our products perform to the highest standards

If the product does not perform as described on this datasheet, we will offer a refund or replacement. For full details of the Abpromise, please visit <https://www.abcam.cn/abpromise> or contact our technical team.

## Terms and conditions

- Guarantee only valid for products bought direct from Abcam or one of our authorized distributors