

Anti-IL-11RA antibody [EPR5446] ab125015

重组 RabMAb

3 References 11 图像

概述

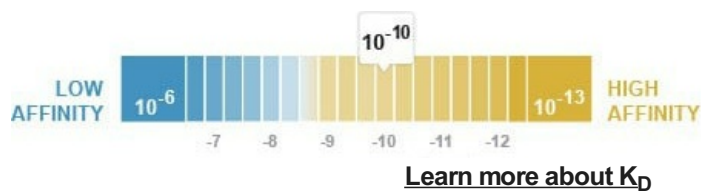
产品名称	Anti-IL-11RA抗体[EPR5446]
描述	兔单克隆抗体[EPR5446] to IL-11RA
宿主	Rabbit
特异性	The Mouse recommendation is based on the WB results. We do not guarantee other applications for Mouse.
经测试应用	适用于: Flow Cyt (Intra), WB, IHC-P, ICC/IF, Indirect ELISA 不适用于: IP
种属反应性	与反应: Mouse, Human
免疫原	Synthetic peptide within Human IL-11RA aa 350 to the C-terminus. The exact sequence is proprietary. Database link: Q14626
阳性对照	WB: 293T, Saos2, A673, PC3, HuT78, K562, and TF1 cell lysates; RAW264.7, WEHI-231, and M1 mouse cell lysates. Mouse spleen, testis, thymus, and lymph node tissue lysates; IHC-P: Human kidney tissue; Flow Cyt (intra): K562 cells; ICC/IF: K562 cells;
常规说明	This product is a recombinant monoclonal antibody, which offers several advantages including: <ul style="list-style-type: none">- High batch-to-batch consistency and reproducibility- Improved sensitivity and specificity- Long-term security of supply- Animal-free production For more information see here . Our RabMAb [®] technology is a patented hybridoma-based technology for making rabbit monoclonal antibodies. For details on our patents, please refer to RabMAb[®] patents . Rat: We have preliminary internal testing data to indicate this antibody may not react with this species. Please contact us for more information.

性能

形式	Liquid
存放说明	Shipped at 4°C. Store at +4°C short term (1-2 weeks). Upon delivery aliquot. Store at -20°C. Stable for 12 months at -20°C.

解离常数 (K_D)

$K_D = 2.78 \times 10^{-10} \text{ M}$



存储溶液

pH: 7.20
Preservative: 0.01% Sodium azide
Constituents: PBS, 40% Glycerol (glycerin, glycerine), 0.05% BSA

纯度

Protein A purified

克隆

单克隆

克隆编号

EPR5446

同种型

IgG

应用

The Abpromise guarantee

Abpromise™ 承诺保证使用 ab125015 于以下的经测试应用

“应用说明”部分下显示的仅为推荐的起始稀释度；实际最佳的稀释度/浓度应由使用者检定。

应用	Ab评论	说明
Flow Cyt (Intra)		1/80. ab172730 - Rabbit monoclonal IgG, is suitable for use as an isotype control with this antibody. For unpurified use in 1/100 - 1/1000
WB		1/1000 - 1/10000. Detects a band of approximately 45 kDa (predicted molecular weight: 45 kDa).
IHC-P		1/250. Perform heat mediated antigen retrieval before commencing with IHC staining protocol. For unpurified use in 1/500 - 1/1000 See <u>IHC antigen retrieval protocols.</u>
ICC/IF		1/100. For unpurified use in 1/500 - 1/1000
Indirect ELISA		Use a concentration of 0.002 - 2 $\mu\text{g/ml}$.

应用说明

Is unsuitable for IP.

靶标

功能

Receptor for interleukin-11. The receptor systems for IL6, LIF, OSM, CNTF, IL11 and CT1 can utilize IL6ST for initiating signal transmission. The IL11/IL11RA/IL6ST complex may be involved in the control of proliferation and/or differentiation of skeletogenic progenitor or other mesenchymal cells.

组织特异性

Expressed in a number of cell lines, including the myelogenous leukemia cell line K562, the

megakaryocytic leukemia cell line Mo7E, the erythroleukemia cell line TF1, and the osteosarcoma cell lines, MG-63 and Saos-2. Also expressed in normal and malignant prostate epithelial cell lines. Expression levels are increased in prostate carcinoma.

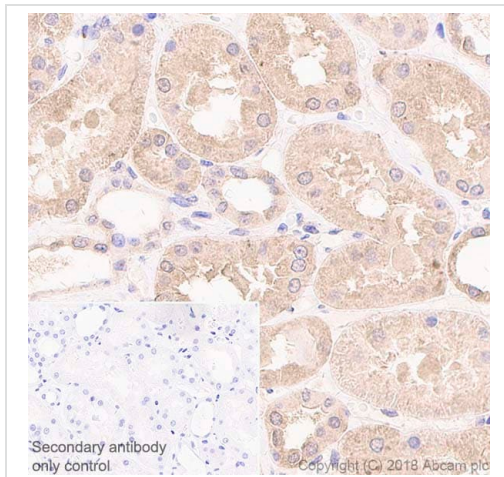
序列相似性

Belongs to the type I cytokine receptor family. Type 3 subfamily.
Contains 2 fibronectin type-III domains.
Contains 1 Ig-like C2-type (immunoglobulin-like) domain.

细胞定位

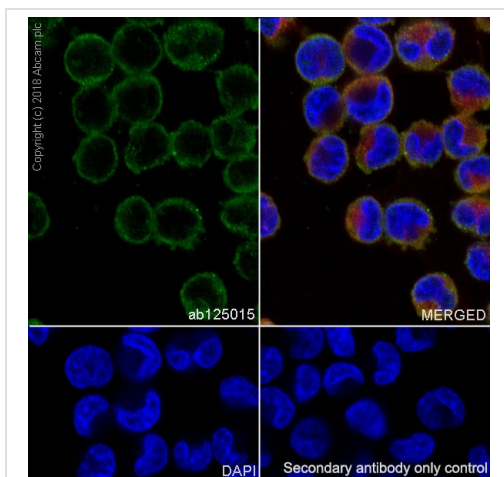
Membrane.

图片



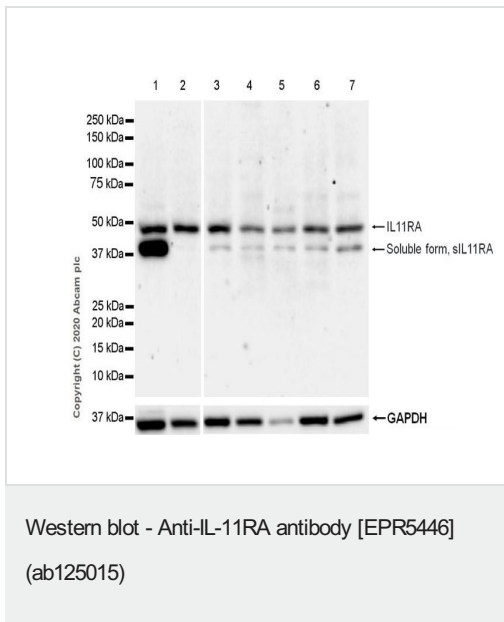
Immunohistochemistry (Formalin/PFA-fixed paraffin-embedded sections) analysis of Human kidney tissue sections labeling IL-11RA with purified ab125015 at 1:250 dilution (3.2 µg/ml). Heat mediated antigen retrieval was performed using **ab93684** (Tris/EDTA buffer, pH 9.0). Goat Anti-Rabbit IgG H&L (HRP) **ab97051** was used as the secondary antibody. Negative control: PBS instead of the primary antibody. Hematoxylin was used as a counterstain.

Immunohistochemistry (Formalin/PFA-fixed paraffin-embedded sections) - Anti-IL-11RA antibody [EPR5446] (ab125015)



Immunocytochemistry/ Immunofluorescence analysis of K-562 (Human chronic myelogenous leukemia lymphoblast) cells labeling IL-11RA with Purified ab125015 at 1:100 dilution (8.1 µg/ml). Cells were fixed in 4% Paraformaldehyde and permeabilized with 0.1% tritonX-100. Cells were counterstained with Ab195889 Anti-alpha Tubulin antibody [DM1A] - Microtubule Marker (Alexa Fluor® 594) 1:200 (2.5 µg/ml). Goat anti rabbit IgG (Alexa Fluor® 488, **ab150077**) was used as the secondary antibody at 1:1000 (2 µg/ml) dilution. DAPI nuclear counterstain. PBS instead of the primary antibody was used as the secondary antibody only control.

Immunocytochemistry/ Immunofluorescence - Anti-IL-11RA antibody [EPR5446] (ab125015)



All lanes : Anti-IL-11RA antibody [EPR5446] (ab125015) at 1/1000 dilution

Lane 1 : RAW264.7 (mouse Abelson murine leukemia virus-induced tumor macrophage) whole cell lysate

Lane 2 : WEHI-231 (mouse B cell lymphoma B lymphocyte) whole cell lysate

Lane 3 : M1 (mouse myeloid leukemia myeloblast) whole cell lysate

Lane 4 : Mouse spleen tissue lysate

Lane 5 : Mouse testis tissue lysate

Lane 6 : Mouse thymus tissue lysate

Lane 7 : Mouse lymph node tissue lysate

Lysates/proteins at 20 µg per lane.

Secondary

All lanes : Goat Anti-Rabbit IgG H&L (HRP) ([ab97051](#)) at 1/20000 dilution

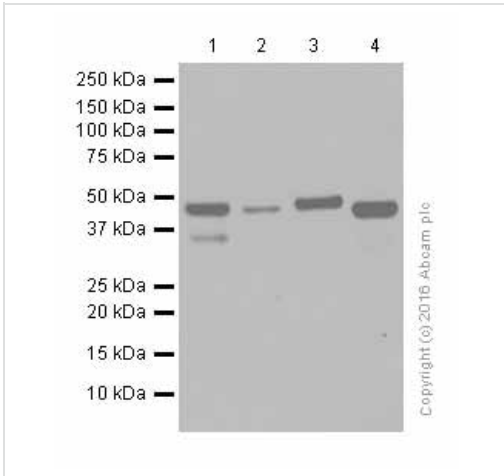
Predicted band size: 45 kDa

Observed band size: 42,45 kDa

Exposure time: 3 minutes

The expression pattern is consistent with what has been described in the literature (PMID: 26876177).

Blocking Buffer and concentration: 5% NFDM/TBST



Western blot - Anti-IL-11RA antibody [EPR5446] (ab125015)

All lanes : Anti-IL-11RA antibody [EPR5446] (ab125015) at 1/10000 dilution (Purified)

Lane 1 : A673 (Human muscle Ewing's Sarcoma) whole cell lysates

Lane 2 : PC-3 (Human prostate adenocarcinoma epithelial cell) whole cell lysates

Lane 3 : HuT-78 (Human Sezary syndrome cutaneous T lymphocyte) whole cell lysates

Lane 4 : K-562 (Human chronic myelogenous leukemia lymphoblast) whole cell lysates

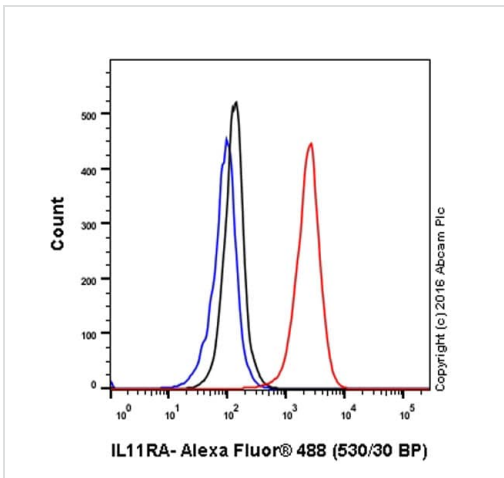
Lysates/proteins at 20 µg per lane.

Secondary

All lanes : Goat Anti-Rabbit IgG H&L (HRP) (**ab97051**) at 1/20000 dilution

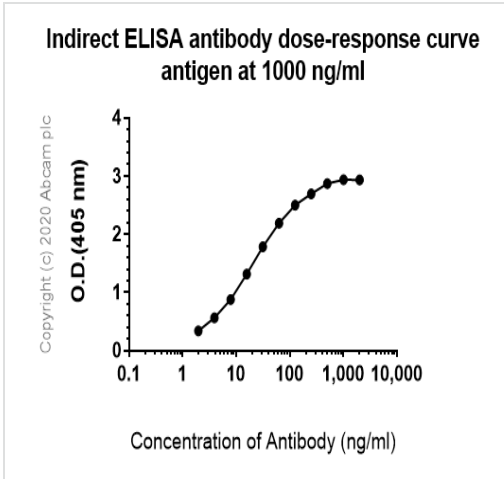
Predicted band size: 45 kDa

Observed band size: 45 kDa



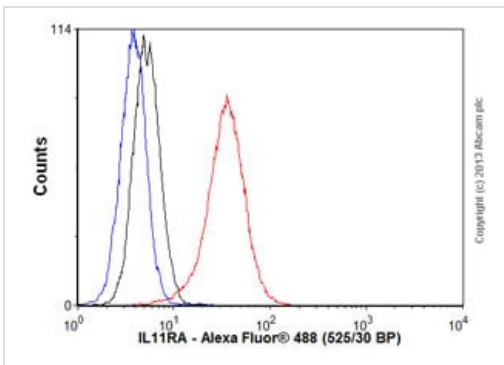
Flow Cytometry (Intracellular) - Anti-IL-11RA antibody [EPR5446] (ab125015)

Intracellular Flow Cytometry analysis of K-562 (Human chronic myelogenous leukemia lymphoblast) cells labeling IL-11RA with Purified ab125015 at 1/80 dilution (10 µg/ml) (red). Cells were fixed with 4% Paraformaldehyde. A Goat anti rabbit IgG (Alexa Fluor® 488, **ab150077**) secondary antibody was used at 1/2000. Isotype control - Rabbit monoclonal IgG (Black). Unlabeled control - Cell without incubation with primary antibody and secondary antibody (Blue).



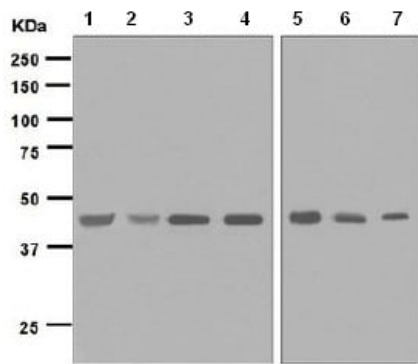
Indirect ELISA - Anti-IL-11RA antibody [EPR5446] (ab125015)

ELISA analysis of Human IL-11RA recombinant protein at 1000 ng/mL with ab125015. An Alkaline Phosphatase-conjugated AffiniPure Goat Anti-Rabbit IgG (H+L) at 1/2500 dilution was used as the secondary antibody.



Flow Cytometry (Intracellular) - Anti-IL-11RA antibody [EPR5446] (ab125015)

Overlay histogram showing K562 cells stained with unpurified ab125015 (red line). The cells were fixed with 4% paraformaldehyde (10 min) and then permeabilized with 0.1% PBS-Tween for 20 min. The cells were then incubated in 1x PBS / 10% normal goat serum / 0.3M glycine to block non-specific protein-protein interactions followed by the antibody (ab125015, 1/1000 dilution) for 30 min at 22°C. The secondary antibody used was Alexa Fluor® 488 goat anti-rabbit IgG (H&L) (ab150077) at 1/2000 dilution for 30 min at 22°C. Isotype control antibody (black line) was rabbit IgG (monoclonal) (0.1µg/1x10⁶ cells) used under the same conditions. Unlabelled sample (blue line) was also used as a control. Acquisition of >5,000 events were collected using a 20mW Argon ion laser (488nm) and 525/30 bandpass filter. This antibody gave a positive signal in K562 cells fixed with 80% methanol (5 min)/permeabilized with 0.1% PBS-Tween for 20 min used under the same conditions.



Western blot - Anti-IL-11RA antibody [EPR5446] (ab125015)

All lanes : Anti-IL-11RA antibody [EPR5446] (ab125015) at 1/1000 dilution (Unpurified)

- Lane 1** : 293T lysate
- Lane 2** : Saos2 lysate
- Lane 3** : A673 lysate
- Lane 4** : PC3 lysate
- Lane 5** : Hut78 lysate
- Lane 6** : K562 lysate
- Lane 7** : TF1 lysate

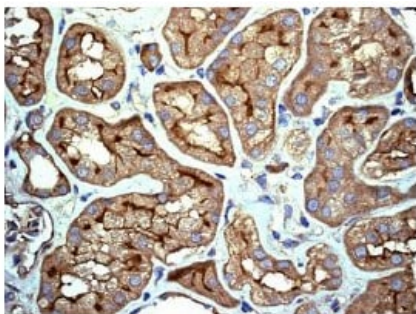
Lysates/proteins at 10 µg per lane.

Secondary

All lanes : Goat anti-Rabbit HRP at 1/2000 dilution

Predicted band size: 45 kDa

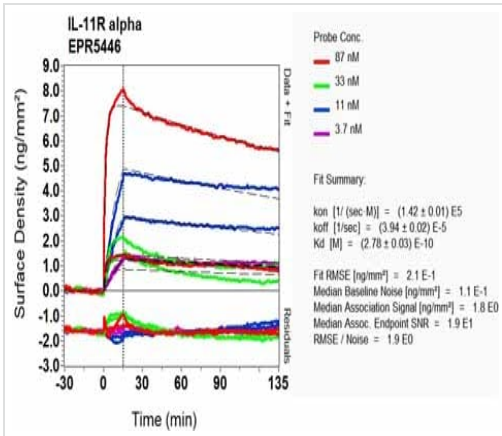
Observed band size: 45 kDa



Immunohistochemistry (Formalin/PFA-fixed paraffin-embedded sections) - Anti-IL-11RA antibody [EPR5446] (ab125015)

Unpurified ab125015 at 1/500 staining IL-11RA in paraffin embedded Human Kidney tissue by immunohistochemistry.

Heat mediated antigen retrieval was performed before commencing with IHC staining protocol.



OI-RD Scanning - Anti-IL-11RA antibody [EPR5446]
(ab125015)

Equilibrium disassociation constant (K_D)

Learn more about K_D

[Click here to learn more about \$K_D\$](#)

Why choose a recombinant antibody?

Research with confidence
Consistent and reproducible results

Long-term and scalable supply
Recombinant technology

Success from the first experiment
Confirmed specificity

Ethical standards compliant
Animal-free production

Anti-IL-11RA antibody [EPR5446] (ab125015)

Please note: All products are "FOR RESEARCH USE ONLY. NOT FOR USE IN DIAGNOSTIC PROCEDURES"

Our Abpromise to you: Quality guaranteed and expert technical support

- Replacement or refund for products not performing as stated on the datasheet
- Valid for 12 months from date of delivery
- Response to your inquiry within 24 hours
- We provide support in Chinese, English, French, German, Japanese and Spanish
- Extensive multi-media technical resources to help you
- We investigate all quality concerns to ensure our products perform to the highest standards

If the product does not perform as described on this datasheet, we will offer a refund or replacement. For full details of the Abpromise, please visit <https://www.abcam.cn/abpromise> or contact our technical team.

Terms and conditions

- Guarantee only valid for products bought direct from Abcam or one of our authorized distributors