

### Anti-IKKi/IKKe antibody ab7891

★★★★★ [1 Abreviews](#) [16 References](#) [6 图像](#)

#### 概述

产品名称	Anti-IKKi/IKKe抗体
描述	兔多克隆抗体to IKKi/IKKe
宿主	Rabbit
特异性	Recognises IKK epsilon and does not cross react with IKK alpha, beta or gamma.
经测试应用	<b>适用于:</b> ICC/IF, IHC-P, WB
种属反应性	<b>与反应:</b> Mouse, Human
免疫原	Synthetic peptide. This information is proprietary to Abcam and/or its suppliers.
常规说明	<p>The Life Science industry has been in the grips of a reproducibility crisis for a number of years. Abcam is leading the way in addressing this with our range of recombinant monoclonal antibodies and knockout edited cell lines for gold-standard validation. Please check that this product meets your needs before purchasing.</p> <p>If you have any questions, special requirements or concerns, please send us an inquiry and/or contact our Support team ahead of purchase. Recommended alternatives for this product can be found below, along with publications, customer reviews and Q&amp;As</p>

#### 性能

形式	Liquid
存放说明	Shipped at 4°C. Store at +4°C short term (1-2 weeks). Upon delivery aliquot. Store at -20°C or -80°C. Avoid freeze / thaw cycle.
存储溶液	<p>pH: 7.2</p> <p>Preservative: 0.02% Sodium azide</p> <p>Constituent: PBS</p>
纯度	Affinity purified
纯化说明	Purified IgG was prepared by affinity chromatography.
Primary antibody说明	Nuclear factor kappa B (NF-κB) is a ubiquitous transcription factor and an essential mediator of gene expression during activation of immune and inflammatory responses. NF-κB mediates the expression of a great variety of genes in response to extracellular stimuli. NF-κB is associated with IκB proteins in the cell cytoplasm, which inhibit NF-κB activity. IκB is phosphorylated by IκB kinase(IKK) complex that contains IKKα, IKKβ, and IKKγ. A novel molecule in the IKK complex was recently identified and designated IKKe/IKK-i. IKKe is required for the activation of NF-κB by

PMA and T cell receptors but not by TNF $\alpha$  and IL-1. IKK $\epsilon$ /IKK- $\eta$  message is expressed in a variety of tissues and is inducible by TNF $\alpha$ , IL-1, and LPS.

克隆 多克隆  
同种型 IgG

## 应用

**The Abpromise guarantee** Abpromise™ 承诺保证使用ab7891于以下的经测试应用

“应用说明”部分 下显示的仅为推荐的起始稀释度;实际最佳的稀释度/浓度应由使用者检定。

应用	Ab评论	说明
ICC/IF		Use a concentration of 1 $\mu$ g/ml.
IHC-P		Use a concentration of 10 $\mu$ g/ml.
WB	★★★★★ (1)	Use a concentration of 1 $\mu$ g/ml. Predicted molecular weight: 80 kDa.

## 靶标

**功能** Phosphorylates inhibitors of NF-kappa-B thus leading to the dissociation of the inhibitor/NF-kappa-B complex and ultimately the degradation of the inhibitor. May play a special role in the immune response. Protects cells against DNA damage-induced cell death.

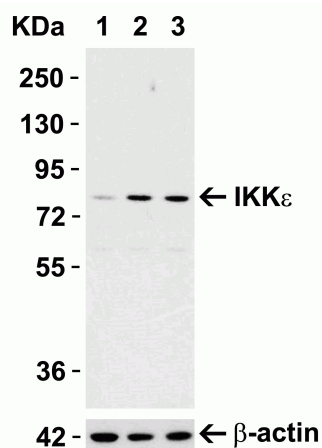
**组织特异性** Highly expressed in spleen followed by thymus, peripheral blood leukocytes, pancreas, placenta. Weakly expressed in lung, kidney, prostate, ovary and colon.

**序列相似性** Belongs to the protein kinase superfamily. Ser/Thr protein kinase family. I-kappa-B kinase subfamily.  
Contains 1 protein kinase domain.

**翻译后修饰** Autophosphorylated.  
Sumoylation by TOPORS upon DNA damage is required for protection of cells against DNA damage-induced cell death. Desumoylated by SENP1.

**细胞定位** Cytoplasm. Nucleus. Nucleus > PML body. Targeting to PML nuclear bodies upon DNA damage is TOPORS-dependent.

## 图片



Western blot - Anti-IKKi/IKKe antibody (ab7891)

**All lanes :** Anti-IKKi/IKKe antibody (ab7891) at 1 µg/ml

**Lane 1 :** Untreated Raw264.7 cell lysates

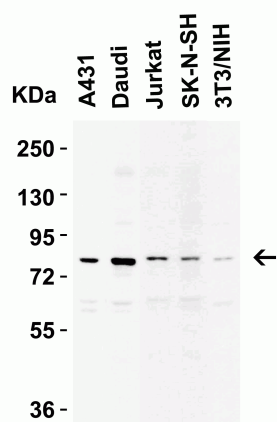
**Lane 2 :** Raw264.7 cell lysates treated with LPS (0.3ug/ml) for 3 hrs

**Lane 3 :** Raw264.7 cell lysates treated with LPS (0.3ug/ml) for 6 hrs

**Secondary**

**All lanes :** Goat anti-rabbit IgG HRP conjugate at 1/10000 dilution

**Predicted band size:** 80 kDa



Western blot - Anti-IKKi/IKKe antibody (ab7891)

**All lanes :** Anti-IKKi/IKKe antibody (ab7891) at 1 µg/ml

**Lane 1 :** A431 cell lysate

**Lane 2 :** Daudi cell lysate

**Lane 3 :** Jurkat cell lysate

**Lane 4 :** SK-N-SH cell lysate

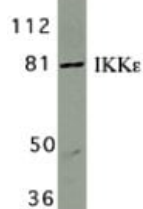
**Lane 5 :** 3T3/NIH cell lysate

Lysates/proteins at 15 µg per lane.

**Secondary**

**All lanes :** Goat anti-rabbit IgG HRP conjugate at 1/10000 dilution

**Predicted band size:** 80 kDa

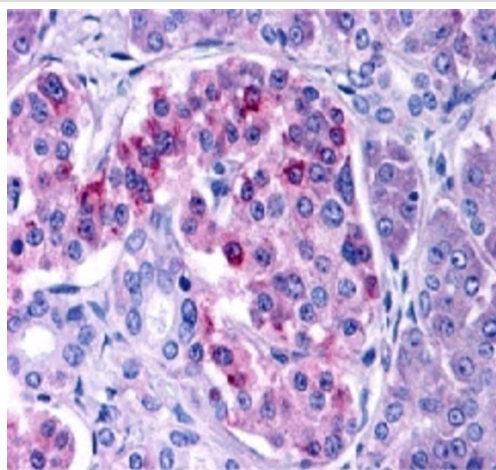


Western blot - Anti-IKKi/IKKe antibody (ab7891)

Anti-IKKi/IKKe antibody (ab7891) at 1 µg/ml + Jurkat whole cell lysate

**Predicted band size:** 80 kDa

**Observed band size:** 80 kDa

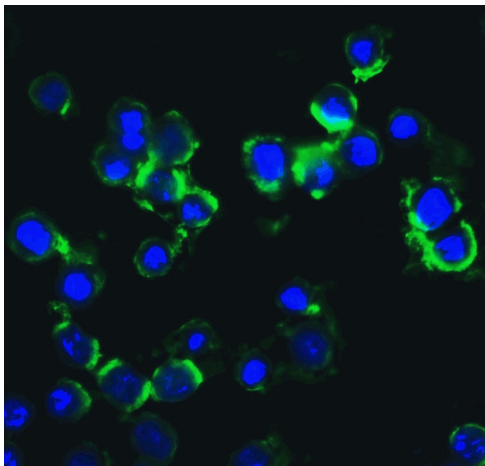


Immunohistochemistry (Formalin/PFA-fixed paraffin-embedded sections) - Anti-IKKi/IKKe antibody (ab7891)

ab7891 at 10µg/ml staining IKK epsilon in human pancreatic tissue by IHC.

Immunocytochemistry/ Immunofluorescence - Anti-IKKi/IKKe antibody (ab7891)

ICC/IF image of ab7891 stained HeLa cells. The cells were 100% methanol fixed (5 min) and then incubated in 1%BSA / 10% normal goat serum / 0.3M glycine in 0.1% PBS-Tween for 1h to permeabilise the cells and block non-specific protein-protein interactions. The cells were then incubated with the antibody (ab7891, 1µg/ml) overnight at +4°C. The secondary antibody (green) was Alexa Fluor® 488 goat anti-rabbit IgG (H+L) used at a 1/1000 dilution for 1h. Alexa Fluor® 594 WGA was used to label plasma membranes (red) at a 1/200 dilution for 1h. DAPI was used to stain the cell nuclei (blue) at a concentration of 1.43µM.



Immunocytochemistry/Immunofluorescence analysis of HeLa cells with ab7891 at 20µg/ml.

Immunocytochemistry/ Immunofluorescence - Anti-IKKi/IKKe antibody (ab7891)

**Please note:** All products are "FOR RESEARCH USE ONLY. NOT FOR USE IN DIAGNOSTIC PROCEDURES"

### Our Abpromise to you: Quality guaranteed and expert technical support

---

- Replacement or refund for products not performing as stated on the datasheet
- Valid for 12 months from date of delivery
- Response to your inquiry within 24 hours
- We provide support in Chinese, English, French, German, Japanese and Spanish
- Extensive multi-media technical resources to help you
- We investigate all quality concerns to ensure our products perform to the highest standards

If the product does not perform as described on this datasheet, we will offer a refund or replacement. For full details of the Abpromise, please visit <https://www.abcam.cn/abpromise> or contact our technical team.

### Terms and conditions

---

- Guarantee only valid for products bought direct from Abcam or one of our authorized distributors