

### Anti-IKB alpha (phospho Y42) antibody [EPR2353] ab92685

**重组** RabMAb

#### 2 图像

#### 概述

|       |  |
|-------|--|
| 产品名称  | Anti-IKB alpha (phospho Y42)抗体[EPR2353]  |
| 描述    | 兔单克隆抗体[EPR2353] to IKB alpha (phospho Y42)   |
| 宿主    | Rabbit   |
| 经测试应用 | <b>适用于:</b> WB<br><b>不适用于:</b> Flow Cyt or IHC-P   |
| 种属反应性 | <b>与反应:</b> Human  |
| 免疫原   | Synthetic peptide. This information is proprietary to Abcam and/or its suppliers.  |
| 阳性对照  | Lysate from A431 cells pre-treated with pervanadate.   |
| 常规说明  | <p>This product is a recombinant monoclonal antibody, which offers several advantages including:</p> <ul style="list-style-type: none"> <li>- High batch-to-batch consistency and reproducibility</li> <li>- Improved sensitivity and specificity</li> <li>- Long-term security of supply</li> <li>- Animal-free production</li> </ul> <p>For more information <a href="#">see here</a>.</p> <p>Our RabMAb<sup>®</sup> technology is a patented hybridoma-based technology for making rabbit monoclonal antibodies. For details on our patents, please refer to <a href="#">RabMAb<sup>®</sup> patents</a>.</p> <p>Mouse, Rat: We have preliminary internal testing data to indicate this antibody may not react with these species. Please contact us for more information.</p> |

#### 性能

|      |  |
|------|--|
| 形式   | Liquid   |
| 存放说明 | Shipped at 4°C. Upon delivery aliquot and store at -20°C. Avoid repeated freeze / thaw cycles.   |
| 存储溶液 | pH: 7.20<br>Preservative: 0.05% Sodium azide<br>Constituents: 0.1% BSA, 40% Glycerol (glycerin, glycerine), 9.85% Tris glycine, 50% Tissue culture supernatant |
| 纯度   | Tissue culture supernatant   |
| 克隆   | 单克隆  |

同种型 IgG

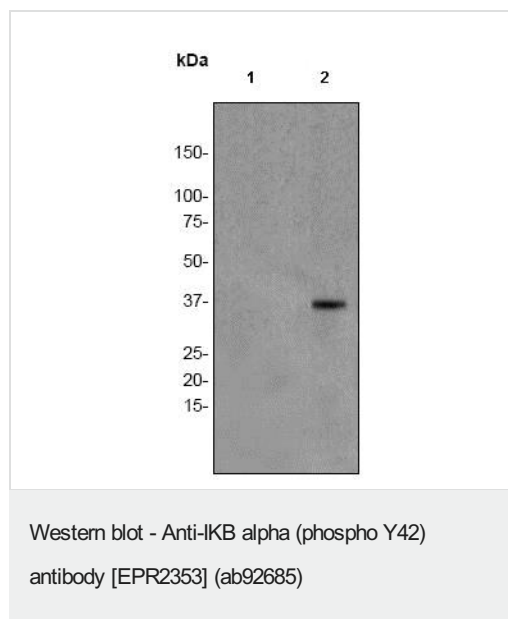
**The Abpromise guarantee**      **Abpromise™承诺保证使用ab92685于以下的经测试应用**

| 应用 | Ab评论 | 说明  |
|----|------|---|
| WB |      | 1/500 - 1/1000. Predicted molecular weight: 36 kDa. |

靶标

**细胞定位** Cytoplasm. Nucleus. Shuttles between the nucleus and the cytoplasm by a nuclear localization signal (NLS) and a CRM1-dependent nuclear export.

图片



**All lanes :** Anti-IKB alpha (phospho Y42) antibody [EPR2353] (ab92685) at 1/500 dilution

**Lane 1 :** A-431 (Human epidermoid carcinoma cell line) whole cell lysate, untreated

**Lane 2 :** A-431 (Human epidermoid carcinoma cell line) whole cell lysate, pre-treated with pervanadate

Lysates/proteins at 10 µg per lane.

### Secondary

**All lanes :** HRP conjugated Goat anti-Rabbit IgG at 1/2000 dilution

**Predicted band size:** 36 kDa

Why choose a recombinant antibody?

**Research with confidence**  
Consistent and reproducible results

**Long-term and scalable supply**  
Recombinant technology

**Success from the first experiment**  
Confirmed specificity

**Ethical standards compliant**  
Animal-free production

Anti-IKB alpha (phospho Y42) antibody [EPR2353] (ab92685)

**Please note:** All products are "FOR RESEARCH USE ONLY. NOT FOR USE IN DIAGNOSTIC PROCEDURES"

### Our Abpromise to you: Quality guaranteed and expert technical support

- Replacement or refund for products not performing as stated on the datasheet
- Valid for 12 months from date of delivery
- Response to your inquiry within 24 hours

- We provide support in Chinese, English, French, German, Japanese and Spanish
- Extensive multi-media technical resources to help you
- We investigate all quality concerns to ensure our products perform to the highest standards

If the product does not perform as described on this datasheet, we will offer a refund or replacement. For full details of the Abpromise, please visit <https://www.abcam.cn/abpromise> or contact our technical team.

#### **Terms and conditions**

---

- Guarantee only valid for products bought direct from Abcam or one of our authorized distributors