


# Anti-IGF2BP2/IMP-2 antibody ab117809

**1 References**   **3 图像**

### 概述

产品名称	Anti-IGF2BP2/IMP-2抗体
描述	兔多克隆抗体to IGF2BP2/IMP-2
宿主	Rabbit
经测试应用	适用于: WB, IP, IHC-P
种属反应性	与反应: Human 预测可用于: Rabbit, Horse, Cow, Dog, Pig, Chimpanzee, Rhesus monkey, Gorilla 
免疫原	Synthetic peptide corresponding to Human IGF2BP2/IMP-2 aa 500-600. Database link: <a href="#">Q9Y6M1</a>
阳性对照	WB: Whole cell lysate from 293T, Jurkat and HeLa cells. IHC-P: Human lung tissue.
常规说明	<p>The Life Science industry has been in the grips of a reproducibility crisis for a number of years. Abcam is leading the way in addressing this with our range of recombinant monoclonal antibodies and knockout edited cell lines for gold-standard validation. Please check that this product meets your needs before purchasing.</p> <p>If you have any questions, special requirements or concerns, please send us an inquiry and/or contact our Support team ahead of purchase. Recommended alternatives for this product can be found below, along with publications, customer reviews and Q&amp;As</p>

### 性能

形式	Liquid
存放说明	Shipped at 4°C. Upon delivery aliquot and store at -20°C. Avoid freeze / thaw cycles.
存储溶液	pH: 7 Preservative: 0.09% Sodium azide Constituent: 99% Tris citrate/phosphate
纯度	pH 7-8 Immunogen affinity purified
克隆	多克隆
同种型	IgG

应用

**The Abpromise guarantee**      **Abpromise™**承诺保证使用ab117809于以下的经测试应用

“应用说明”部分 下显示的仅为推荐的起始稀释度;实际最佳的稀释度/浓度应由使用者检定。

应用	Ab评论	说明
WB		1/2000 - 1/10000. Predicted molecular weight: 66 kDa.
IP		Use at 2-10 µg/mg of lysate.
IHC-P		1/500 - 1/2000. Epitope retrieval with citrate buffer pH 6.0 is recommended.

靶标

功能	Binds to the 5'-UTR of the insulin-like growth factor 2 (IGF2) mRNAs. Binding is isoform-specific. May regulate translation of target mRNAs.
组织特异性	Expressed in oocytes, granulosa cells of small and growing follicles, Leydig cells, spermatogonia and semen (at protein level). Expressed in testicular cancer (at protein level). Expressed weakly in heart, placenta, skeletal muscle, bone marrow, colon, kidney, salivary glands, testis and pancreas. Detected in fetal liver, fetal ovary, gonocytes and interstitial cells of the testis.
序列相似性	Belongs to the RRM IMP/VICKZ family. Contains 4 KH domains. Contains 2 RRM (RNA recognition motif) domains.
结构域	The third and fourth KH domains are important for binding to the untranslated region (UTR) of target mRNA.
细胞定位	Cytoplasm. Localized in cytoplasmic mRNP granules containing untranslated mRNAs. Localizes at the connecting piece and the tail of the spermatozoa.

图片



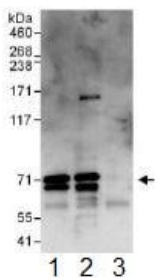
**All lanes :** Anti-IGF2BP2/IMP-2 antibody (ab117809) at 0.1 µg/ml

- Lane 1 :** Whole cell lysate from 293T cells at 50 µg
- Lane 2 :** Whole cell lysate from 293T cells at 15 µg
- Lane 3 :** Whole cell lysate from Jurkat cells at 50 µg
- Lane 4 :** Whole cell lysate from HeLa cells at 50 µg

Developed using the ECL technique.

**Predicted band size:** 66 kDa

**Exposure time:** 3 minutes



Immunoprecipitation - Anti-IGF2BP2/IMP-2 antibody  
(ab117809)

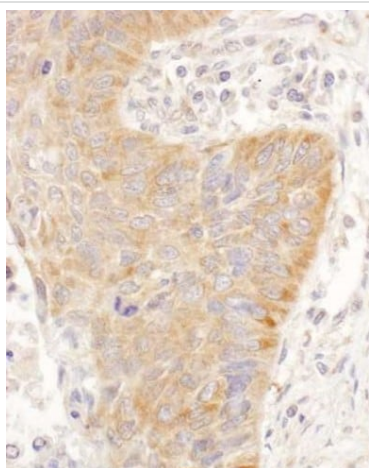
ab117809 at 1 µg/ml staining IGF2BP2/IMP-2 by WB, following immunoprecipitation of whole cell lysate from 293T cells.

Lane 1; IP using an antibody to an upstream epitope.

Lane 2; IP using ab117809 at 6 µg/mg lysate.

Lane 3; IP using control IgG.

1 mg of lysate was used for IP and 20% of IP was loaded. Detection utilised ECL with a 30 second exposure.



Immunohistochemistry (Formalin/PFA-fixed paraffin-embedded sections) - Anti-IGF2BP2/IMP-2 antibody  
(ab117809)

Immunohistochemical (Formalin/PFA-fixed paraffin-embedded sections) analysis of human lung tissue sections using ab117809 at 1/1000 dilution.

**Please note:** All products are "FOR RESEARCH USE ONLY. NOT FOR USE IN DIAGNOSTIC PROCEDURES"

### Our Abpromise to you: Quality guaranteed and expert technical support

- Replacement or refund for products not performing as stated on the datasheet
- Valid for 12 months from date of delivery
- Response to your inquiry within 24 hours
- We provide support in Chinese, English, French, German, Japanese and Spanish
- Extensive multi-media technical resources to help you
- We investigate all quality concerns to ensure our products perform to the highest standards

If the product does not perform as described on this datasheet, we will offer a refund or replacement. For full details of the Abpromise, please visit <https://www.abcam.cn/abpromise> or contact our technical team.

### Terms and conditions

- Guarantee only valid for products bought direct from Abcam or one of our authorized distributors