

Anti-IgE antibody, prediluted ab75673

★★★★★ [1 Abreviews](#) [7 References](#) [1 图像](#)

概述

产品名称	Anti-IgE抗体, prediluted
描述	兔多克隆抗体to IgE, prediluted
宿主	Rabbit
特异性	This antibody recognizes IgE, epsilon heavy chain of human immunoglobulins. It does not cross-react with alpha (IgA), gamma (IgG), mu (IgM), or delta (IgD), heavy chains, T-cells, monocytes, granulocytes, or erythrocytes.
经测试应用	适用于: IHC-P
种属反应性	与反应: Human
免疫原	Full length IgE isolated from a pool of normal human sera.
阳性对照	Human Tonsil tissue
常规说明	

This antibody is useful in the identification of leukemias, plasmacytomas and certain non-Hodgkin's lymphomas.

The Life Science industry has been in the grips of a reproducibility crisis for a number of years. Abcam is leading the way in addressing this with our range of recombinant monoclonal antibodies and knockout edited cell lines for gold-standard validation. Please check that this product meets your needs before purchasing.

If you have any questions, special requirements or concerns, please send us an inquiry and/or contact our Support team ahead of purchase. Recommended alternatives for this product can be found below, along with publications, customer reviews and Q&As

性能

形式	Liquid
存放说明	Shipped at 4°C. Store at +4°C.
存储溶液	pH: 7.60 Preservative: 0.0975% Sodium azide Constituent: 0.79% Tris HCl
	Containing antibody stabilizer
纯度	Protein A purified

Primary antibody说明	This antibody is useful in the identification of leukemias, plasmacytomas and certain non-Hodgkin's lymphomas.
克隆	多克隆
同种型	IgG

应用

The Abpromise guarantee **Abpromise™**承诺保证使用ab75673于以下的经测试应用

“应用说明”部分 下显示的仅为推荐的起始稀释度;实际最佳的稀释度/浓度应由使用者检定。

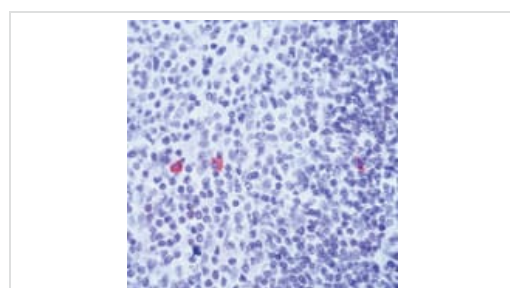
应用	Ab评论	说明
IHC-P	★★★★☆ (1)	1/1. Perform heat mediated antigen retrieval before commencing with IHC staining protocol. Ready to use.

靶标

相关性 IgE is the class of antibodies produced in the lungs, skin, and mucous membranes. It may protect against parasite invasion, but it is a major factor in allergic reactions. The antigen-specific IgE interacts with mast cells and eosinophils, triggers the release of histamine, leukotrienes and other substances that lead to the itching, sneezing and congestion of allergies - and the life threatening respiratory distress of asthma and anaphylactic shock.

细胞定位 Cell Membrane

图片



Formalin-fixed, paraffin-embedded human tonsil stained with ab75673, using peroxidase-conjugate and AEC chromogen. Note cytoplasmic staining of IgE-secreting cells.

Immunohistochemistry (Formalin/PFA-fixed paraffin-embedded sections) - Anti-IgE antibody, prediluted (ab75673)

Please note: All products are "FOR RESEARCH USE ONLY. NOT FOR USE IN DIAGNOSTIC PROCEDURES"

Our Abpromise to you: Quality guaranteed and expert technical support

- Replacement or refund for products not performing as stated on the datasheet

- Valid for 12 months from date of delivery
- Response to your inquiry within 24 hours

- We provide support in Chinese, English, French, German, Japanese and Spanish
- Extensive multi-media technical resources to help you
- We investigate all quality concerns to ensure our products perform to the highest standards

If the product does not perform as described on this datasheet, we will offer a refund or replacement. For full details of the Abpromise, please visit <https://www.abcam.cn/abpromise> or contact our technical team.

Terms and conditions

- Guarantee only valid for products bought direct from Abcam or one of our authorized distributors