

Anti-IFT122 antibody ab111838

2 图像

概述

| | |
|--------------|---|
| 产品名称 | Anti-IFT122抗体 |
| 描述 | 兔多克隆抗体to IFT122 |
| 宿主 | Rabbit |
| 经测试应用 | 适用于: WB, IHC-P |
| 种属反应性 | 与反应: Human |
| 免疫原 | Recombinant fragment, corresponding to a region within amino acids 667-883 of Human IFT122 (AAH03045). |
| 阳性对照 | 293T whole cell lysate; Hepatoma tissue. |
| 常规说明 | <p>The Life Science industry has been in the grips of a reproducibility crisis for a number of years. Abcam is leading the way in addressing this with our range of recombinant monoclonal antibodies and knockout edited cell lines for gold-standard validation. Please check that this product meets your needs before purchasing.</p> <p>If you have any questions, special requirements or concerns, please send us an inquiry and/or contact our Support team ahead of purchase. Recommended alternatives for this product can be found below, along with publications, customer reviews and Q&As</p> |

性能

| | |
|-------------|---|
| 形式 | Liquid |
| 存放说明 | Shipped at 4°C. Upon delivery aliquot. Store at -20°C or -80°C. Avoid freeze / thaw cycle. |
| 存储溶液 | pH: 7.00 Preservative: 0.01% Thimerosal (merthiolate) Constituents: 1.21% Tris, 0.75% Glycine, 20% Glycerol (glycerin, glycerine) |
| 纯度 | Immunogen affinity purified |
| 纯化说明 | ab111838 is purified by antigen-affinity chromatography. |
| 克隆 | 多克隆 |
| 同种型 | IgG |

应用

The Abpromise guarantee

Abpromise™ 承诺保证使用 ab111838 于以下的经测试应用

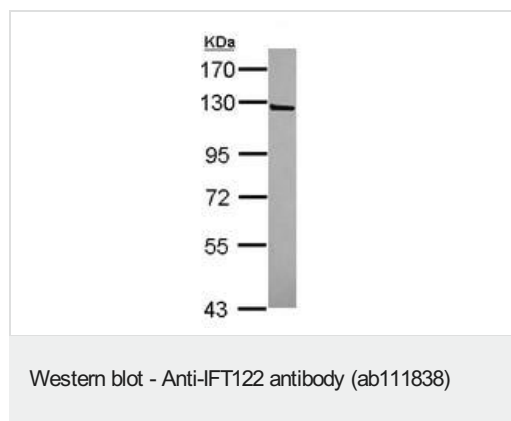
“应用说明”部分 下显示的仅为推荐的起始稀释度;实际最佳的稀释度/浓度应由使用者检定。

| 应用 | Ab评论 | 说明 |
|-------|------|--|
| WB | | 1/500 - 1/3000. Predicted molecular weight: 129 kDa. |
| IHC-P | | 1/100 - 1/500. Perform heat mediated antigen retrieval with citrate buffer pH 6 before commencing with IHC staining protocol. or Tris-EDTA buffer (pH 8.0) |

靶标

| | |
|-------|---|
| 功能 | Required for cilia formation and Shh signaling during neuronal patterning. |
| 组织特异性 | Expressed in many tissues. Predominant expression in testis and pituitary. |
| 疾病相关 | Defects in IFT122 are a cause of cranioectodermal dysplasia type 1 (CED1) [MIM:218330]. CED1 is a disorder characterized by craniofacial, skeletal and ectodermal abnormalities. Clinical features include dolichocephaly (with or without sagittal suture synostosis), scaphocephaly, short stature, limb shortening, short ribs, narrow chest, brachydactyly, renal failure and hepatic fibrosis, small and abnormally shaped teeth, sparse hair, skin laxity and abnormal nails. |
| 序列相似性 | Contains 7 WD repeats. |
| 细胞定位 | Cytoplasm. Cell projection > cilium. Cytoplasm > cytoskeleton > cilium basal body. Localizes to photoreceptor connecting cilia. |

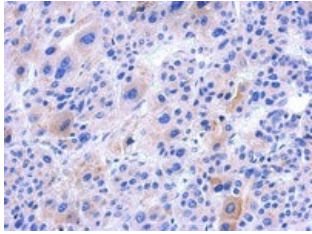
图片



Anti-IFT122 antibody (ab111838) at 1/1000 dilution + 293T cell line lysate at 30 µg

Predicted band size: 129 kDa

7.5% SDS PAGE



ab111838, at 1/500 dilution, staining IFT122 in Formalin-fixed, Paraffin-embedded Hepatoma tissue by Immunohistochemistry.

Immunohistochemistry (Formalin/PFA-fixed paraffin-embedded sections) - Anti-IFT122 antibody (ab111838)

Please note: All products are "FOR RESEARCH USE ONLY. NOT FOR USE IN DIAGNOSTIC PROCEDURES"

Our Abpromise to you: Quality guaranteed and expert technical support

- Replacement or refund for products not performing as stated on the datasheet
- Valid for 12 months from date of delivery
- Response to your inquiry within 24 hours
- We provide support in Chinese, English, French, German, Japanese and Spanish
- Extensive multi-media technical resources to help you
- We investigate all quality concerns to ensure our products perform to the highest standards

If the product does not perform as described on this datasheet, we will offer a refund or replacement. For full details of the Abpromise, please visit <https://www.abcam.cn/abpromise> or contact our technical team.

Terms and conditions

- Guarantee only valid for products bought direct from Abcam or one of our authorized distributors