

Anti-IERX1/IER3 antibody ab65152

6 References [3 图像](#)

概述

产品名称	Anti-IERX1/IER3抗体
描述	兔多克隆抗体to IEX1/IER3
宿主	Rabbit
经测试应用	适用于: WB, IHC-P, ICC/IF
种属反应性	与反应: Mouse, Human
免疫原	Synthetic peptide. This information is proprietary to Abcam and/or its suppliers.
阳性对照	IHC-P: Human adrenal tissue. ICC/IF: Human brain cells. WB: Human brain tissue lysate.
常规说明	<p>The Life Science industry has been in the grips of a reproducibility crisis for a number of years. Abcam is leading the way in addressing this with our range of recombinant monoclonal antibodies and knockout edited cell lines for gold-standard validation. Please check that this product meets your needs before purchasing.</p> <p>If you have any questions, special requirements or concerns, please send us an inquiry and/or contact our Support team ahead of purchase. Recommended alternatives for this product can be found below, along with publications, customer reviews and Q&As</p>

性能

形式	Liquid
存放说明	Shipped at 4°C. Store at +4°C short term (1-2 weeks). Upon delivery aliquot. Store at -20°C long term.
存储溶液	<p>pH: 7.4</p> <p>Preservative: 0.02% Sodium azide</p> <p>Constituent: PBS</p>
纯度	Immunogen affinity purified
克隆	多克隆
同种型	IgG

应用

The Abpromise guarantee

Abpromise™ 承诺保证使用ab65152于以下的经测试应用

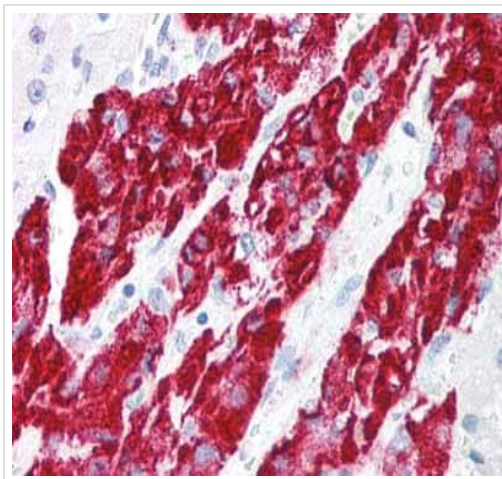
“应用说明”部分 下显示的仅为推荐的起始稀释度;实际最佳的稀释度/浓度应由使用者检定。

应用	Ab评论	说明
WB		Use a concentration of 2 - 4 µg/ml. Predicted molecular weight: 17 kDa.
IHC-P		Use a concentration of 5 µg/ml.
ICC/IF		Use a concentration of 20 µg/ml.

靶标

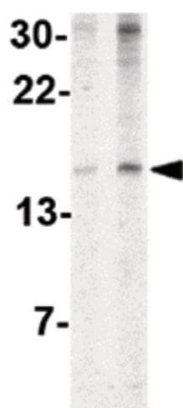
功能	May play a role in the ERK signaling pathway by inhibiting the dephosphorylation of ERK by phosphatase PP2A-PPP2R5C holoenzyme. Acts also as an ERK downstream effector mediating survival. As a member of the NUPR1/RELB/IER3 survival pathway, may provide pancreatic ductal adenocarcinoma with remarkable resistance to cell stress, such as starvation or gemcitabine treatment.
序列相似性	Belongs to the IER3 family.
翻译后修饰	Phosphorylated at Thr-18, Thr-123 and Ser-126 by MAPK1/ERK2 and probably MAPK3/ERK1. Upon phosphorylation by MAPK1/ERK2 and MAPK3/ERK1, acquires the ability to inhibit cell death induced by various stimuli. Glycosylated.
细胞定位	Membrane.

图片



Immunohistochemical analysis of formalin-fixed, paraffin-embedded human adrenal tissue, staining IEX1/IER3 with ab65152 at 5 µg/ml.

Immunohistochemistry (Formalin/PFA-fixed paraffin-embedded sections) - Anti-IEX1/IER3 antibody (ab65152)



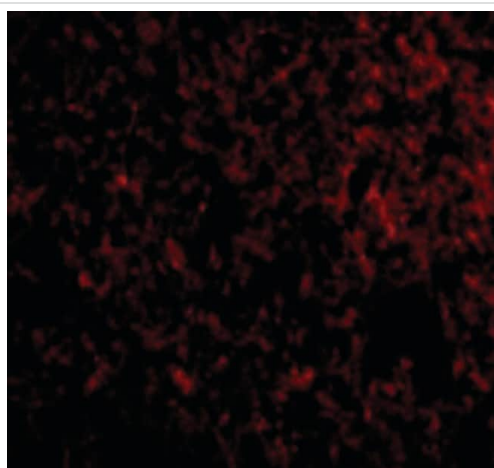
Western blot - Anti-LEX1/IER3 antibody (ab65152)

Lane 1 : Anti-LEX1/IER3 antibody (ab65152) at 2 µg/ml

Lane 2 : Anti-LEX1/IER3 antibody (ab65152) at 4 µg/ml

All lanes : Human brain tissue lysate

Predicted band size: 17 kDa



Immunocytochemistry/ Immunofluorescence - Anti-LEX1/IER3 antibody (ab65152)

Immunocytochemistry/ Immunofluorescence analysis of human brain cells staining LEX1/IER3 with ab65152 at 20 µg/ml.

Please note: All products are "FOR RESEARCH USE ONLY. NOT FOR USE IN DIAGNOSTIC PROCEDURES"

Our Abpromise to you: Quality guaranteed and expert technical support

- Replacement or refund for products not performing as stated on the datasheet
- Valid for 12 months from date of delivery
- Response to your inquiry within 24 hours
- We provide support in Chinese, English, French, German, Japanese and Spanish
- Extensive multi-media technical resources to help you
- We investigate all quality concerns to ensure our products perform to the highest standards

If the product does not perform as described on this datasheet, we will offer a refund or replacement. For full details of the Abpromise, please visit <https://www.abcam.cn/abpromise> or contact our technical team.

Terms and conditions

- Guarantee only valid for products bought direct from Abcam or one of our authorized distributors