

### Anti-IdU antibody [OTI2F8] ab187742

★★★★★ [1 Abreviews](#) [2 References](#) [2 图像](#)

#### 概述

产品名称	Anti-IdU抗体[OTI2F8]
描述	大鼠单克隆抗体[OTI2F8] to IdU
宿主	Rat
特异性	ab187742 has been shown to cross react with BrdU. Cross-reactivity with other similar molecules has not been tested.
经测试应用	<b>适用于:</b> IHC-P
免疫原	Chemical/ Small Molecule corresponding to IdU conjugated to Keyhole Limpet Haemocyanin (KLH).
阳性对照	Colon tissue from IdU injected mouse.
常规说明	<p>The clone number has been updated from 2F8 to OTI2F8, both clone numbers name the same clone.</p> <p>The Life Science industry has been in the grips of a reproducibility crisis for a number of years. Abcam is leading the way in addressing this with our range of recombinant monoclonal antibodies and knockout edited cell lines for gold-standard validation. Please check that this product meets your needs before purchasing.</p> <p>If you have any questions, special requirements or concerns, please send us an inquiry and/or contact our Support team ahead of purchase. Recommended alternatives for this product can be found below, along with publications, customer reviews and Q&amp;As</p>

#### 性能

形式	Liquid
存放说明	Shipped at 4°C. Store at +4°C short term (1-2 weeks). Upon delivery aliquot. Store at -20°C long term. Avoid freeze / thaw cycle.
存储溶液	pH: 7.30 Preservative: 0.02% Sodium azide Constituents: 48% PBS, 50% Glycerol, 1% BSA
纯度	Protein A purified
纯化说明	ab187742 is purified from cell culture supernatant by affinity chromatography.
克隆	单克隆

克隆编号 OT12F8

同种型 IgG2a

## 应用

**The Abpromise guarantee** **Abpromise™**承诺保证使用ab187742于以下的经测试应用

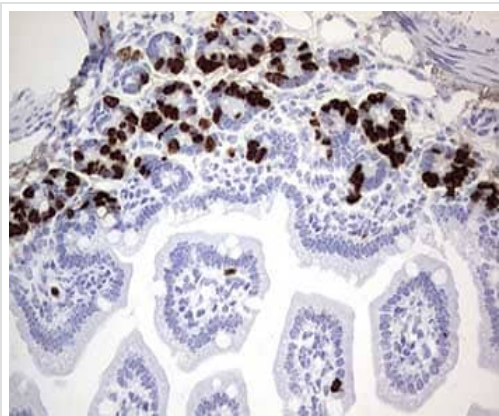
“应用说明”部分 下显示的仅为推荐的起始稀释度;实际最佳的稀释度/浓度应由使用者检定。

应用	Ab评论	说明
IHC-P		1/150.

## 靶标

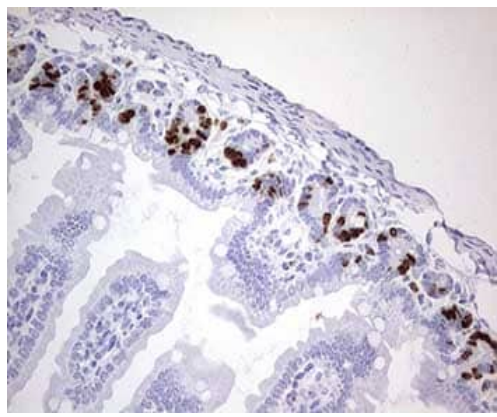
**相关性** Iododeoxyuridine (5-Iodo-2'-deoxyuridine, IdU) is a synthetic thymidine nucleoside analog. IdU, like BrdU thymidine analog, is used to allow the detection of growing or proliferating cells in living tissues. During the S-phase of cell division, DNA replication occurs, and IdU can be incorporated into the newly synthesized DNA by substituting for naturally occurring thymidine. Antibodies specific for IdU are subsequently used to detect the incorporated IdU thymidine analog. This highlights cells that were actively replicating their DNA and is suggestive of actively growing cells. Antibody binding usually requires the DNA to be denatured, typically by exposing the cells to acid or heat.

## 图片



Immunohistochemical analysis of paraffin-embedded colon tissue from IdU injected mouse, labeling IdU with ab187742 at 1/150 dilution.

Immunohistochemistry (Formalin/PFA-fixed paraffin-embedded sections) - Anti-IdU antibody [OT12F8] (ab187742)



Immunohistochemical analysis of paraffin-embedded colon tissue from BrdU injected mouse, labeling IdU with ab187742 at 1/150 dilution.

Immunohistochemistry (Formalin/PFA-fixed paraffin-embedded sections) - Anti-IdU antibody [OT12F8] (ab187742)

**Please note:** All products are "FOR RESEARCH USE ONLY. NOT FOR USE IN DIAGNOSTIC PROCEDURES"

### **Our Abpromise to you: Quality guaranteed and expert technical support**

---

- Replacement or refund for products not performing as stated on the datasheet
- Valid for 12 months from date of delivery
- Response to your inquiry within 24 hours
- We provide support in Chinese, English, French, German, Japanese and Spanish
- Extensive multi-media technical resources to help you
- We investigate all quality concerns to ensure our products perform to the highest standards

If the product does not perform as described on this datasheet, we will offer a refund or replacement. For full details of the Abpromise, please visit <https://www.abcam.cn/abpromise> or contact our technical team.

### **Terms and conditions**

---

- Guarantee only valid for products bought direct from Abcam or one of our authorized distributors