


Anti-IDH2 antibody ab109588

[1 References](#) [2 图像](#)

概述

产品名称	Anti-IDH2抗体
描述	山羊多克隆抗体to IDH2
宿主	Goat
经测试应用	适用于: WB
种属反应性	与反应: Mouse, Rat, Human, Pig 预测可用于: Rabbit, Horse, Chicken, Cow, Dog, Macaque monkey 
免疫原	Synthetic peptide: CIHGLSNVKLNE , corresponding to internal sequence amino acids 418-429 of Human IDH2 according to NP_002159.2 Run BLAST with Run BLAST with
阳性对照	Human, Mouse or Rat Heart lysate
常规说明	<p>The Life Science industry has been in the grips of a reproducibility crisis for a number of years. Abcam is leading the way in addressing this with our range of recombinant monoclonal antibodies and knockout edited cell lines for gold-standard validation. Please check that this product meets your needs before purchasing.</p> <p>If you have any questions, special requirements or concerns, please send us an inquiry and/or contact our Support team ahead of purchase. Recommended alternatives for this product can be found below, along with publications, customer reviews and Q&As</p>
性能	
形式	Liquid
存放说明	Shipped at 4°C. Upon delivery aliquot and store at -20°C. Avoid repeated freeze / thaw cycles.
存储溶液	pH: 7.30 Preservative: 0.02% Sodium azide Constituents: Tris buffered saline, 0.5% BSA
纯度	Immunogen affinity purified
纯化说明	Purified from goat serum by ammonium sulphate precipitation followed by antigen affinity chromatography using the immunizing peptide.

克隆 多克隆
同种型 IgG

应用

The Abpromise guarantee **Abpromise™**承诺保证使用ab109588于以下的经测试应用

“应用说明”部分 下显示的仅为推荐的起始稀释度;实际最佳的稀释度/浓度应由使用者检定。

应用	Ab评论	说明
WB		Use a concentration of 0.1 - 0.3 µg/ml. Detects a band of approximately 48 kDa (predicted molecular weight: 51 kDa). 1 hour primary incubation is recommended for this product.

靶标

功能 Plays a role in intermediary metabolism and energy production. It may tightly associate or interact with the pyruvate dehydrogenase complex.

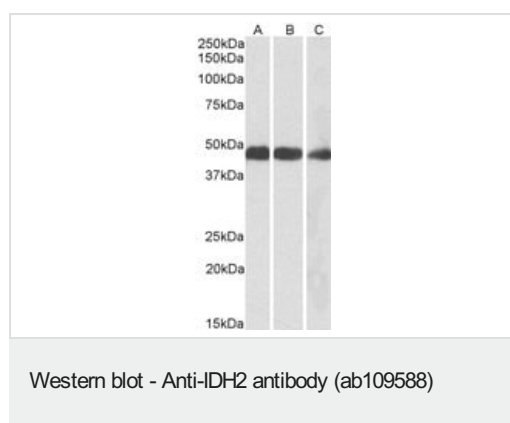
疾病相关 D-2-hydroxyglutaric aciduria 2
Glioma
Genetic variations are associated with cartilaginous tumors such as enchondroma or chondrosarcoma.

序列相似性 Belongs to the isocitrate and isopropylmalate dehydrogenases family.

翻译后修饰 Acetylation at Lys-413 dramatically reduces catalytic activity. Deacetylated by SIRT3.

细胞定位 Mitochondrion.

图片



All lanes : Anti-IDH2 antibody (ab109588) at 0.1 µg/ml

Lane 1 : Mouse heart tissue lysates

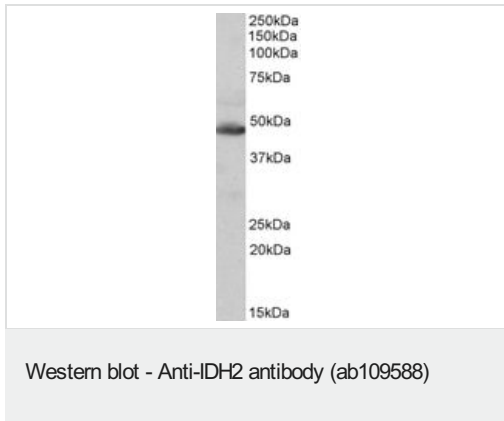
Lane 2 : Rat heart tissue lysates

Lane 3 : Pig heart tissue lysates

Lysates/proteins at 35 µg per lane.

Predicted band size: 51 kDa

Primary incubation was 1 hour.



Anti-IDH2 antibody (ab109588) at 0.1 µg/ml + Human heart lysate
at 35 µg

Developed using the ECL technique.

Predicted band size: 51 kDa

Observed band size: 48 kDa

Primary incubation was 1 hour.

Please note: All products are "FOR RESEARCH USE ONLY. NOT FOR USE IN DIAGNOSTIC PROCEDURES"

Our Abpromise to you: Quality guaranteed and expert technical support

- Replacement or refund for products not performing as stated on the datasheet
- Valid for 12 months from date of delivery
- Response to your inquiry within 24 hours
- We provide support in Chinese, English, French, German, Japanese and Spanish
- Extensive multi-media technical resources to help you
- We investigate all quality concerns to ensure our products perform to the highest standards

If the product does not perform as described on this datasheet, we will offer a refund or replacement. For full details of the Abpromise, please visit <https://www.abcam.cn/abpromise> or contact our technical team.

Terms and conditions

- Guarantee only valid for products bought direct from Abcam or one of our authorized distributors