


Anti-IDH1 antibody ab113232

1 References 3 图像

概述	
产品名称	Anti-IDH1抗体
描述	兔多克隆抗体to IDH1
宿主	Rabbit
经测试应用	适用于: WB, IHC-P
种属反应性	与反应: Human 预测可用于: Mouse, Rat, Cow, Zebrafish 
免疫原	Recombinant full length protein corresponding to Human IDH1.
阳性对照	Human liver and prostate tissues; A431 and Raji whole cell lysates
常规说明	<p>The Life Science industry has been in the grips of a reproducibility crisis for a number of years. Abcam is leading the way in addressing this with our range of recombinant monoclonal antibodies and knockout edited cell lines for gold-standard validation. Please check that this product meets your needs before purchasing.</p> <p>If you have any questions, special requirements or concerns, please send us an inquiry and/or contact our Support team ahead of purchase. Recommended alternatives for this product can be found below, along with publications, customer reviews and Q&As</p>
性能	
形式	Liquid
存放说明	Shipped at 4°C. Upon delivery aliquot and store at -20°C. Avoid freeze / thaw cycles.
存储溶液	pH: 7.00 Preservative: 0.01% Thimerosal (merthiolate) Constituents: Tris glycine, 10% Glycerol (glycerin, glycerine)
纯度	Immunogen affinity purified
克隆	多克隆
同种型	IgG
应用	

“应用说明”部分 下显示的仅为推荐的起始稀释度;实际最佳的稀释度/浓度应由使用者检定。

应用	Ab评论	说明
WB		1/500 - 1/3000. Predicted molecular weight: 46 kDa.
IHC-P		Use a concentration of 10 µg/ml.

靶标

疾病相关

Glioma

Genetic variations are associated with cartilaginous tumors such as enchondroma or chondrosarcoma. Mutations of Arg-132 to Cys, Gly or His abolish the conversion of isocitrate to alpha-ketoglutarate. Instead, alpha-ketoglutarate is converted to R(-)-2-hydroxyglutarate.

序列相似性

Belongs to the isocitrate and isopropylmalate dehydrogenases family.

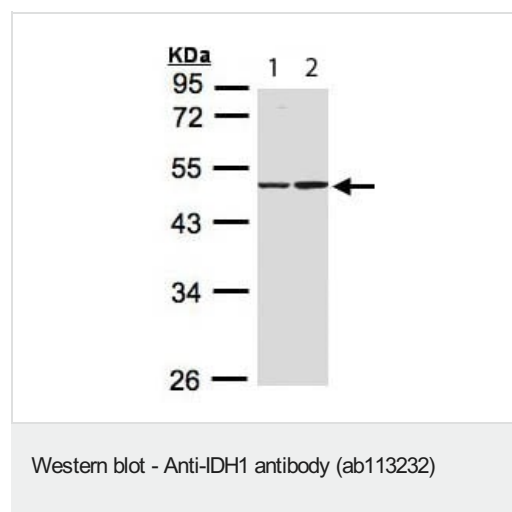
翻译后修饰

Acetylation at Lys-374 dramatically reduces catalytic activity.

细胞定位

Cytoplasm. Peroxisome.

图片



All lanes : Anti-IDH1 antibody (ab113232) at 1/1000 dilution

Lane 1 : A431 whole cell lysate

Lane 2 : Raji whole cell lysate

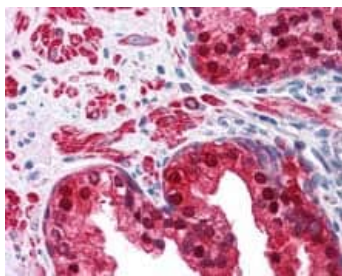
Lysates/proteins at 30 µg per lane.

Predicted band size: 46 kDa

10% SDS PAGE



Staining of IDH1 in a formalin fixed, paraffin embedded section of Human liver, using **ab113232** at a concentration of 10 µg/ml.



Immunohistochemistry (Formalin/PFA-fixed paraffin-embedded sections) - Anti-IDH1 antibody (ab113232)

Staining of IDH1 in a formalin fixed, paraffin embedded section of Human prostate, using **ab113232** at a concentration of 10 µg/ml.

Please note: All products are "FOR RESEARCH USE ONLY. NOT FOR USE IN DIAGNOSTIC PROCEDURES"

Our Abpromise to you: Quality guaranteed and expert technical support

- Replacement or refund for products not performing as stated on the datasheet
- Valid for 12 months from date of delivery
- Response to your inquiry within 24 hours
- We provide support in Chinese, English, French, German, Japanese and Spanish
- Extensive multi-media technical resources to help you
- We investigate all quality concerns to ensure our products perform to the highest standards

If the product does not perform as described on this datasheet, we will offer a refund or replacement. For full details of the Abpromise, please visit <https://www.abcam.cn/abpromise> or contact our technical team.

Terms and conditions

- Guarantee only valid for products bought direct from Abcam or one of our authorized distributors