


Anti-ID2 antibody [OTI10C3] ab90055

[2 References](#) [6 图像](#)

概述

产品名称	Anti-ID2抗体[OTI10C3]
描述	小鼠单克隆抗体[OTI10C3] to ID2
宿主	Mouse
经测试应用	适用于: WB, IHC-P, ICC/IF, Flow Cyt (Intra)
种属反应性	与反应: Human 预测可用于: Mouse, Rat, Cow, Pig, Cynomolgus monkey, Orangutan 
免疫原	Recombinant full length protein corresponding to Human ID2 aa 1-134. Protein expressed in E.coli. NP_002157 Sequence: MKAFFSPVRSVRKNSLSDHSLGISRSKTPVDDPMSLLYNMND YSKLLKELV PSIPQNKVKSKMEILQHVIDYILDQLALDSHPTIVSLHHQR PGQNQASR TPLTTLNTDISILSLQASEFPSELMNSDKALCG Database link: Q02363 Run BLAST with Run BLAST with
阳性对照	IHC-P: Human liver, bladder carcinoma and liver carcinoma tissue. ICC/IF: HeLa cells. WB: pCMV6-ENTRY ID2 cDNA transfected HEK-293T cell lysate. Flow Cyt (Intra): SH-SY5Y cells.
常规说明	The clone number has been updated from 10C3 to OTI10C3, both clone numbers name the same clone. The Life Science industry has been in the grips of a reproducibility crisis for a number of years. Abcam is leading the way in addressing this with our range of recombinant monoclonal antibodies and knockout edited cell lines for gold-standard validation. Please check that this product meets your needs before purchasing. If you have any questions, special requirements or concerns, please send us an inquiry and/or contact our Support team ahead of purchase. Recommended alternatives for this product can be found below, along with publications, customer reviews and Q&As

性能

形式 Liquid

存放说明	Shipped at 4°C. Store at +4°C short term (1-2 weeks). Upon delivery aliquot. Store at -20°C. Avoid freeze / thaw cycle.
存储溶液	pH: 7.30 Preservative: 0.02% Sodium azide Constituents: 50% Glycerol, 1% BSA, PBS
纯度	Affinity purified
纯化说明	Purified from cell culture supernatant by affinity chromatography
克隆	单克隆
克隆编号	OT110C3
同种型	IgG2b

应用

The Abpromise guarantee **Abpromise™**承诺保证使用ab90055于以下的经测试应用

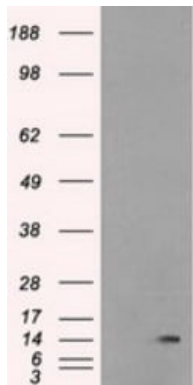
“应用说明”部分 下显示的仅为推荐的起始稀释度;实际最佳的稀释度/浓度应由使用者检定。

应用	Ab评论	说明
WB		1/500. Predicted molecular weight: 15 kDa.
IHC-P		1/50. Perform heat mediated antigen retrieval before commencing with IHC staining protocol.
ICC/IF		1/50.
Flow Cyt (Intra)		Use 1µg for 10 ⁶ cells.

靶标

功能	ID (inhibitor of DNA binding) HLH proteins lack a basic DNA-binding domain but are able to form heterodimers with other HLH proteins, thereby inhibiting DNA binding. ID-2 may be an inhibitor of tissue-specific gene expression.
组织特异性	Highly expressed in early fetal tissues, including those of the central nervous system.
序列相似性	Contains 1 basic helix-loop-helix (bHLH) domain.
发展阶段	Found in most early fetal tissues but not in the corresponding mature tissues.
细胞定位	Cytoplasm. Nucleus.

图片



Western blot - Anti-ID2 antibody [OT110C3]
(ab90055)

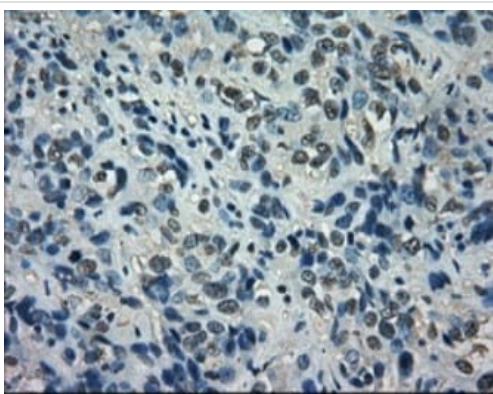
All lanes : Anti-ID2 antibody [OT110C3] (ab90055) at 1/500 dilution

Lane 1 : HEK-293T (Human epithelial cell line from embryonic kidney transformed with large T antigen) cells were transfected with the pCMV6-ENTRY control

Lane 2 : HEK-293T cells were transfected with the pCMV6-ENTRY ID2 cDNA

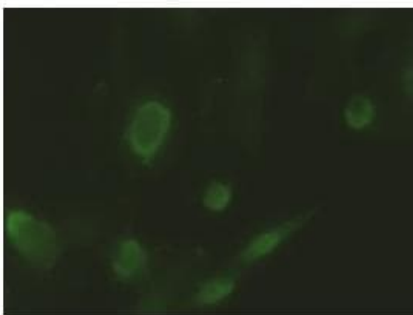
Lysates/proteins at 5 µg per lane.

Predicted band size: 15 kDa



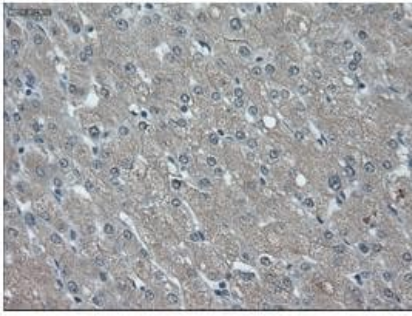
Immunohistochemistry (Formalin/PFA-fixed paraffin-embedded sections) - Anti-ID2 antibody [OT110C3]
(ab90055)

Paraffin-embedded human bladder carcinoma tissue stained for ID2 with ab90055 at a 1/50 dilution in immunohistochemical analysis. Heat-induced epitope retrieval by 10 mM citric buffer, pH 6.0, 100°C for 10 minutes.



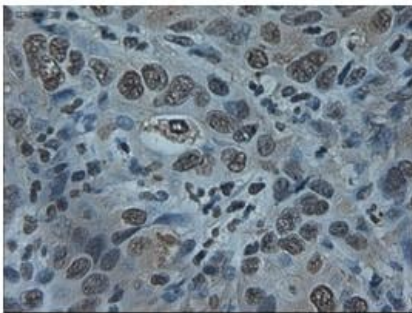
Immunocytochemistry/ Immunofluorescence - Anti-ID2 antibody [OT110C3] (ab90055)

HeLa (Human epithelial cell line from cervix adenocarcinoma) cells stained for ID2 using ab90055 at a 1/50 dilution in ICC/IF.



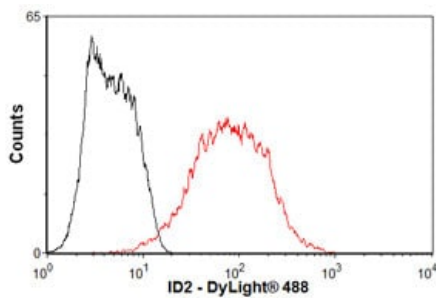
Immunohistochemistry (Formalin/PFA-fixed paraffin-embedded sections) - Anti-ID2 antibody [OTI10C3] (ab90055)

Paraffin-embedded human liver tissue stained for ID2 with ab90055 at a 1/50 dilution in immunohistochemical analysis. Heat-induced epitope retrieval by 10 mM citric buffer, pH 6.0, 100°C for 10 minutes.



Immunohistochemistry (Formalin/PFA-fixed paraffin-embedded sections) - Anti-ID2 antibody [OTI10C3] (ab90055)

Paraffin-embedded human liver carcinoma tissue stained for ID2 with ab90055 at a 1/50 dilution in immunohistochemical analysis. Heat-induced epitope retrieval by 10 mM citric buffer, pH 6.0, 100°C for 10 minutes.



Flow Cytometry (Intracellular) - Anti-ID2 antibody [OTI10C3] (ab90055)

Overlay histogram showing SH-SY5Y cells stained with ab90055 (red line). The cells were fixed with 4% paraformaldehyde (10 min) and then permeabilized with 0.1% PBS-Tween for 20 min. The cells were then incubated in 1x PBS / 10% normal goat serum / 0.3M glycine to block non-specific protein-protein interactions. The cells were then incubated with the antibody (ab90055, 1µg/1x10⁶ cells) for 30 min at 22°C. The secondary antibody used was DyLight® 488 goat anti-mouse IgG (H+L) ([ab96879](#)) at 1/500 dilution for 30 min at 22°C. Isotype control antibody (black line) was mouse IgG2b [PLPV219] ([ab91366](#), 2µg/1x10⁶ cells) used under the same conditions. Acquisition of >5,000 events was performed. This antibody gave a positive signal in SH-SY5Y cells fixed with 80% methanol (5 min)/permeabilized with 0.1% PBS-Tween for 20 min used under the same conditions.

Our Abpromise to you: Quality guaranteed and expert technical support

- Replacement or refund for products not performing as stated on the datasheet
- Valid for 12 months from date of delivery
- Response to your inquiry within 24 hours

- We provide support in Chinese, English, French, German, Japanese and Spanish
- Extensive multi-media technical resources to help you
- We investigate all quality concerns to ensure our products perform to the highest standards

If the product does not perform as described on this datasheet, we will offer a refund or replacement. For full details of the Abpromise, please visit <https://www.abcam.cn/abpromise> or contact our technical team.

Terms and conditions

- Guarantee only valid for products bought direct from Abcam or one of our authorized distributors