

### Anti-ICOS antibody [7E.17G9] ab95630

#### 1 图像

#### 概述

产品名称	Anti-ICOS抗体[7E.17G9]
描述	大鼠单克隆抗体[7E.17G9] to ICOS
宿主	Rat
经测试应用	适用于: Flow Cyt
种属反应性	与反应: Mouse
免疫原	Mouse ICOS cDNA and ICOS hexahistidine fusion protein.
阳性对照	Three day ConA activated BALB/c splenocytes or Mouse splenocyte suspensions
常规说明	<p>The Life Science industry has been in the grips of a reproducibility crisis for a number of years. Abcam is leading the way in addressing this with our range of recombinant monoclonal antibodies and knockout edited cell lines for gold-standard validation. Please check that this product meets your needs before purchasing.</p> <p>If you have any questions, special requirements or concerns, please send us an inquiry and/or contact our Support team ahead of purchase. Recommended alternatives for this product can be found below, along with publications, customer reviews and Q&amp;As</p>

#### 性能

形式	Liquid
存放说明	Shipped at 4°C. Store at +4°C short term (1-2 weeks). Store at -20°C or -80°C. Avoid freeze / thaw cycle.
存储溶液	pH: 7.20 Preservative: 0.09% Sodium azide Constituents: 0.87% Sodium chloride, PBS
纯度	Protein G purified
克隆	单克隆
克隆编号	7E.17G9
同种型	IgG2b
轻链类型	kappa

**The Abpromise guarantee**      **Abpromise™**承诺保证使用ab95630于以下的经测试应用

“应用说明”部分 下显示的仅为推荐的起始稀释度;实际最佳的稀释度/浓度应由使用者检定。

应用	Ab评论	说明
Flow Cyt		Use 0.06-1µg for 10 <sup>5-8</sup> cells. A 100 µl volume is recommended for staining the cell sample.  ab19526 Rat monoclonal IgG2b is suitable for use as an

**靶标**

**功能**      Enhances all basic T-cell responses to a foreign antigen, namely proliferation, secretion of lymphokines, up-regulation of molecules that mediate cell-cell interaction, and effective help for antibody secretion by B-cells. Essential both for efficient interaction between T and B-cells and for normal antibody responses to T-cell dependent antigens. Does not up-regulate the production of interleukin-2, but superinduces the synthesis of interleukin-10. Prevents the apoptosis of pre-activated T-cells. Plays a critical role in CD40-mediated class switching of immunoglobulin isotypes.

**组织特异性**      Activated T-cells. Highly expressed on tonsillar T-cells, which are closely associated with B-cells in the apical light zone of germinal centers, the site of terminal B-cell maturation. Expressed at lower levels in thymus, lung, lymph node and peripheral blood leukocytes. Expressed in the medulla of fetal and newborn thymus.

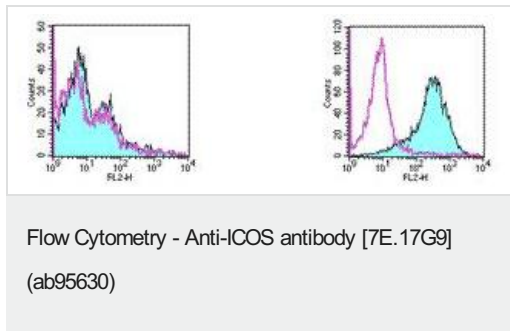
**疾病相关**      Immunodeficiency, common variable, 1

**序列相似性**      Contains 1 Ig-like V-type (immunoglobulin-like) domain.

**翻译后修饰**      N-glycosylated.

**细胞定位**      Secreted and Cell membrane.

**图片**



Staining of unstimulated (left) and 3 day ConA activated (right) BALB/c splenocytes with 0.06 µg of Rat IgG2b isotype Control (open histogram) or 0.06 µg of ab95630 (filled histogram) followed by Anti-Rat IgG Biotin and Streptavidin PE. Total viable cells were used for analysis.

**Please note:** All products are "FOR RESEARCH USE ONLY. NOT FOR USE IN DIAGNOSTIC PROCEDURES"

## **Our Abpromise to you: Quality guaranteed and expert technical support**

---

- Replacement or refund for products not performing as stated on the datasheet
- Valid for 12 months from date of delivery
- Response to your inquiry within 24 hours
  
- We provide support in Chinese, English, French, German, Japanese and Spanish
- Extensive multi-media technical resources to help you
- We investigate all quality concerns to ensure our products perform to the highest standards

If the product does not perform as described on this datasheet, we will offer a refund or replacement. For full details of the Abpromise, please visit <https://www.abcam.cn/abpromise> or contact our technical team.

## **Terms and conditions**

---

- Guarantee only valid for products bought direct from Abcam or one of our authorized distributors