

Anti-ICER antibody ab64832

★★★★☆ [1 Abreviews](#) [4 References](#) [1 图像](#)

概述

产品名称	Anti-ICER抗体
描述	兔多克隆抗体to ICER
宿主	Rabbit
经测试应用	适用于: WB
种属反应性	与反应: Human
免疫原	Synthetic peptide corresponding to Human ICER (internal sequence).
常规说明	<p>The Life Science industry has been in the grips of a reproducibility crisis for a number of years. Abcam is leading the way in addressing this with our range of recombinant monoclonal antibodies and knockout edited cell lines for gold-standard validation. Please check that this product meets your needs before purchasing.</p> <p>If you have any questions, special requirements or concerns, please send us an inquiry and/or contact our Support team ahead of purchase. Recommended alternatives for this product can be found below, along with publications, customer reviews and Q&As</p>

性能

形式	Liquid
存放说明	Shipped at 4°C. Store at -20°C. Stable for 12 months at -20°C.
存储溶液	pH: 7.40 Preservative: 0.02% Sodium azide Constituents: PBS, 50% Glycerol (glycerin, glycerine), 0.87% Sodium chloride
纯度	Without Mg ²⁺ and Ca ²⁺ Immunogen affinity purified
克隆	多克隆
同种型	IgG

应用

The Abpromise guarantee

Abpromise™ 承诺保证使用ab64832于以下的经测试应用

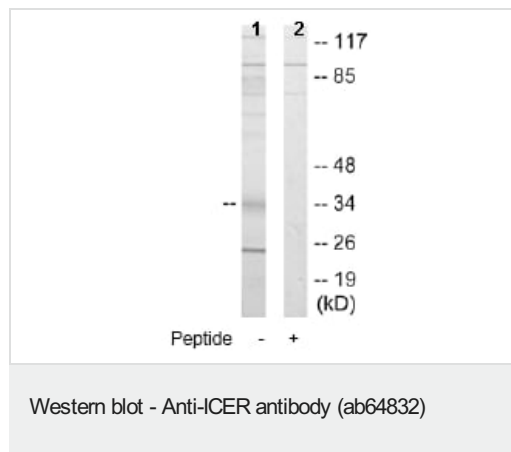
“应用说明”部分 下显示的仅为推荐的起始稀释度;实际最佳的稀释度/浓度应由使用者检定。

应用	Ab评论	说明
WB	★★★★☆ (1)	1/500 - 1/1000. Detects a band of approximately 34 kDa (predicted molecular weight: 37 kDa).

靶标

功能	Transcriptional regulator that binds the cAMP response element (CRE), a sequence present in many viral and cellular promoters. Isoforms are either transcriptional activators or repressors. Plays a role in spermatogenesis and is involved in spermatid maturation.
组织特异性	Expressed in testes (round spermatids) (at protein level). Isoform 14 is the major activator form in testes.
序列相似性	Belongs to the bZIP family. Contains 1 bZIP (basic-leucine zipper) domain. Contains 1 KID (kinase-inducible) domain.
翻译后修饰	Isoform 9 is ubiquitinated by CDC34 and RAD6B in order to be degraded by the proteasome. Stimulated by phosphorylation.
细胞定位	Nucleus.

图片



All lanes : Anti-ICER antibody (ab64832) at 1/500 dilution

Lane 1 : K562 cell extract

Lane 2 : K562 cell extract with immunising peptide at 10 µg

Lysates/proteins at 30 µg per lane.

Predicted band size: 37 kDa

Observed band size: 34 kDa

Additional bands at: 25 kDa. We are unsure as to the identity of these extra bands.

Please note: All products are "FOR RESEARCH USE ONLY. NOT FOR USE IN DIAGNOSTIC PROCEDURES"

Our Abpromise to you: Quality guaranteed and expert technical support

- Replacement or refund for products not performing as stated on the datasheet
- Valid for 12 months from date of delivery
- Response to your inquiry within 24 hours

- We provide support in Chinese, English, French, German, Japanese and Spanish
- Extensive multi-media technical resources to help you
- We investigate all quality concerns to ensure our products perform to the highest standards

If the product does not perform as described on this datasheet, we will offer a refund or replacement. For full details of the Abpromise, please visit <https://www.abcam.cn/abpromise> or contact our technical team.

Terms and conditions

- Guarantee only valid for products bought direct from Abcam or one of our authorized distributors