

Anti-ICAM3 antibody [ICAM3.1] ab10804

4 References 1 图像

概述	
产品名称	Anti-ICAM3抗体[ICAM3.1]
描述	小鼠单克隆抗体[ICAM3.1] to ICAM3
宿主	Mouse
经测试应用	适用于: IHC-P
种属反应性	与反应: Human
免疫原	ICAM 3Fc chimeric fusion protein.
常规说明	<p>The Life Science industry has been in the grips of a reproducibility crisis for a number of years. Abcam is leading the way in addressing this with our range of recombinant monoclonal antibodies and knockout edited cell lines for gold-standard validation. Please check that this product meets your needs before purchasing.</p> <p>If you have any questions, special requirements or concerns, please send us an inquiry and/or contact our Support team ahead of purchase. Recommended alternatives for this product can be found below, along with publications, customer reviews and Q&As</p>
性能	
形式	Liquid
存放说明	Shipped at 4°C. Upon delivery aliquot and store at -20°C or -80°C. Avoid repeated freeze / thaw cycles.
存储溶液	Preservative: 0.02% Sodium azide Constituent: 99.98% PBS
纯度	Protein A purified
克隆	单克隆
克隆编号	ICAM3.1
骨髓瘤	Sp2
同种型	IgG1
应用	

“应用说明”部分 下显示的仅为推荐的起始稀释度;实际最佳的稀释度/浓度应由使用者检定。

应用	Ab评论	说明
IHC-P		

应用说明

ELISA: Use at an assay dependent dilution.
 Flow Cyt: Use at an assay dependent dilution.
 IHC-Fr: Use at an assay dependent dilution.
 IHC-P: Use at a concentration of 1 µg/ml.
 IP: Use at an assay dependent dilution.
 RIA: Use at an assay dependent dilution.
 WB: Use at an assay dependent dilution. Predicted molecular weight: 66 kDa.
 ICC/IF: Use at an assay dependent dilution From (PubMed:17353362)
 Not tested in other applications.
 Optimal dilutions/concentrations should be determined by the end user.

靶标

功能

ICAM proteins are ligands for the leukocyte adhesion protein LFA-1 (integrin alpha-L/beta-2).
 ICAM3 is also a ligand for integrin alpha-D/beta-2.

序列相似性

Belongs to the immunoglobulin superfamily. ICAM family.
 Contains 5 Ig-like C2-type (immunoglobulin-like) domains.

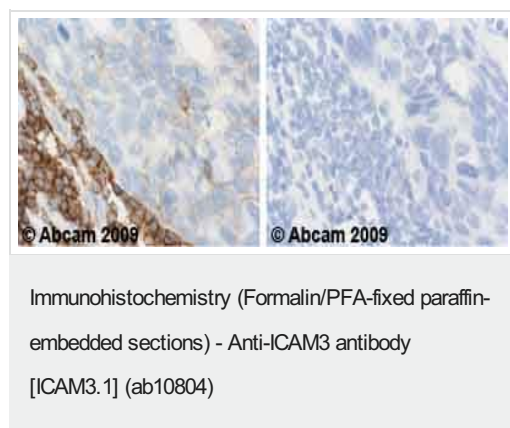
翻译后修饰

Upon stimulation by a physiologic stimuli becomes rapidly and transiently phosphorylated on serine residues.
 N-glycosylated; glycans consist of a mixture of tri- and tetra-antennary complex-type chains and high-mannose chains.

细胞定位

Membrane.

图片



Ab10804 staining Human malignant stomach. Staining is localised to the membrane.

Left panel: with primary antibody at 1 µg/ml. Right panel: isotype control.

Sections were stained using an automated system DAKO Autostainer Plus, at room temperature: sections were rehydrated and antigen retrieved with the Dako 3 in 1 AR buffers citrate pH6.1 in a DAKO PT Link. Slides were peroxidase blocked in 3% H₂O₂ in methanol for 10 mins. They were then blocked with Dako Protein block for 10 minutes (containing casein 0.25% in PBS) then incubated with primary antibody for 20 min and detected with Dako envision flex amplification kit for 30 minutes. Colorimetric detection was completed with Diaminobenzidine for 5 minutes. Slides were counterstained with Haematoxylin and coverslipped under DePeX. Please note that for manual staining we recommend to optimize the

primary antibody concentration and incubation time (overnight incubation), and amplification may be required.

Please note: All products are "FOR RESEARCH USE ONLY. NOT FOR USE IN DIAGNOSTIC PROCEDURES"

Our Abpromise to you: Quality guaranteed and expert technical support

- Replacement or refund for products not performing as stated on the datasheet
- Valid for 12 months from date of delivery
- Response to your inquiry within 24 hours
- We provide support in Chinese, English, French, German, Japanese and Spanish
- Extensive multi-media technical resources to help you
- We investigate all quality concerns to ensure our products perform to the highest standards

If the product does not perform as described on this datasheet, we will offer a refund or replacement. For full details of the Abpromise, please visit <https://www.abcam.cn/abpromise> or contact our technical team.

Terms and conditions

- Guarantee only valid for products bought direct from Abcam or one of our authorized distributors