

### Anti-ICAM1 antibody [YN1/1.7.4] ab119871

★★★★★ [1 Abreviews](#) [56 References](#) [3 图像](#)

#### 概述

产品名称	Anti-ICAM1抗体[YN1/1.7.4]
描述	大鼠单克隆抗体[YN1/1.7.4] to ICAM1
宿主	Rat
经测试应用	适用于: Flow Cyt, IHC-P
种属反应性	与反应: Mouse, Rat
免疫原	Tissue, cells or virus corresponding to Mouse ICAM1. Mouse NS-1 cells
阳性对照	This antibody gave a positive result in IHC in the following FFPE tissue: Mouse lung.
常规说明	<p>The Life Science industry has been in the grips of a reproducibility crisis for a number of years. Abcam is leading the way in addressing this with our range of recombinant monoclonal antibodies and knockout edited cell lines for gold-standard validation. Please check that this product meets your needs before purchasing.</p> <p>If you have any questions, special requirements or concerns, please send us an inquiry and/or contact our Support team ahead of purchase. Recommended alternatives for this product can be found below, along with publications, customer reviews and Q&amp;As</p>

#### 性能

形式	Liquid
存放说明	Shipped at 4°C. Upon delivery aliquot and store at -20°C. Avoid freeze / thaw cycles.
存储溶液	<p>pH: 7.40</p> <p>Preservative: 0.1% Sodium azide</p> <p>Constituent: 99% PBS</p>
纯度	Protein G purified
纯化说明	Purity is > 95% (y SDS-PAGE).
克隆	单克隆
克隆编号	YN1/1.7.4
同种型	IgG2b

#### 应用

The Abpromise guarantee

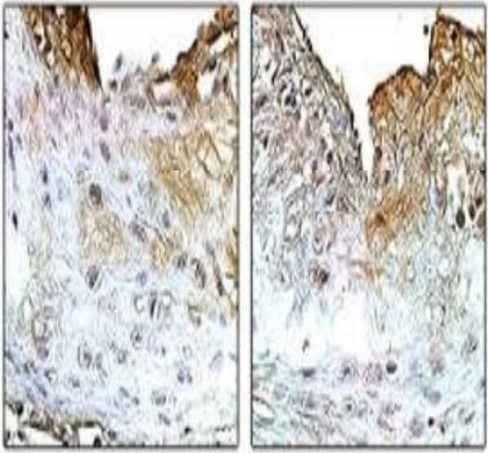
Abpromise™承诺保证使用ab119871于以下的经测试应用

“应用说明”部分 下显示的仅为推荐的起始稀释度;实际最佳的稀释度/浓度应由使用者检定。

应用	Ab评论	说明
Flow Cyt		Use a concentration of 1 µg/ml. <b>ab18536</b> - Rat monoclonal IgG2b, is suitable for use as an isotype control with this antibody.
IHC-P		Use a concentration of 5 µg/ml. Perform heat mediated antigen retrieval with Tris/EDTA buffer pH 9.0 before commencing with IHC staining protocol.

靶标	
功能	ICAM proteins are ligands for the leukocyte adhesion protein LFA-1 (integrin alpha-L/beta-2). During leukocyte trans-endothelial migration, ICAM1 engagement promotes the assembly of endothelial apical cups through ARHGEF26/SGEF and RHOG activation. In case of rhinovirus infection acts as a cellular receptor for the virus.
序列相似性	Belongs to the immunoglobulin superfamily. ICAM family. Contains 5 Ig-like C2-type (immunoglobulin-like) domains.
翻译后修饰	Monoubiquitinated, which is promoted by MARCH9 and leads to endocytosis.
细胞定位	Membrane.

图片



Immunohistochemistry (Formalin/PFA-fixed paraffin-embedded sections) analysis of mouse atherosclerotic lesions of aortic root tissue sections labeling ICAM1 with ab119871 at 1/200 dilution. The aortic root was rapidly fixed and harvested at 4°C in phosphate-buffered 4% paraformaldehyde, pH 7.0–7.4, then embedded in paraffin wax sectioned by semi-automated rotary microtome.

Immunohistochemistry (Formalin/PFA-fixed paraffin-embedded sections) - Anti-ICAM1 antibody  
[YN1/1.7.4] (ab119871)

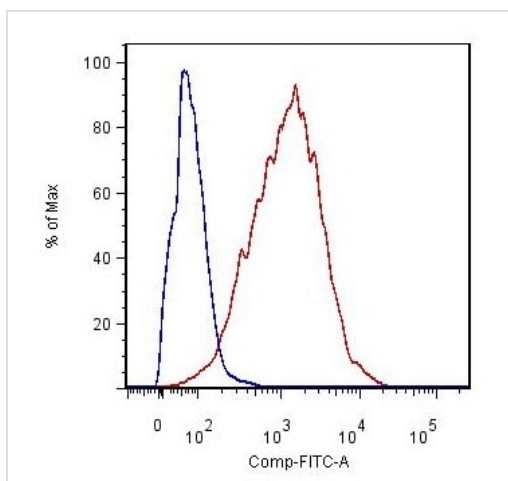
Image from Sun, Hui et al. Journal of Cellular and Molecular Medicine 19.4 (2015): 836–849. doi: 10.1111/jcmm.12521, Fig 6C. Reproduced under the Creative Commons license <http://creativecommons.org/licenses/by/4.0/>.



Immunohistochemistry (Formalin/PFA-fixed paraffin-embedded sections) - Anti-ICAM1 antibody [YN1/1.7.4] (ab119871)

IHC image of ICAM1 staining in Mouse normal lung formalin fixed paraffin embedded tissue section, performed on a Leica Bond™ system using the standard protocol B. The section was pre-treated using heat mediated antigen retrieval with EDTA based pH 9.0 solution, (epitope retrieval solution 2) for 20 mins. The section was then incubated with ab119871, 5µg/ml, for 15 mins at room temperature. A Goat anti-Rat biotinylated secondary antibody was used to detect the primary, and visualized using an HRP conjugated ABC system. DAB was used as the chromogen. The section was then counterstained with haematoxylin and mounted with DPX.

For other IHC staining systems (automated and non-automated) customers should optimize variable parameters such as antigen retrieval conditions, primary antibody concentration and antibody incubation times.



Flow Cytometry - Anti-ICAM1 antibody [YN1/1.7.4] (ab119871)

Flow Cytometry analysis of mouse thymocytes labeling ICAM1 with Anti-ICAM1 antibody [YN1/1.7.4] (ab119871).

**Please note:** All products are "FOR RESEARCH USE ONLY. NOT FOR USE IN DIAGNOSTIC PROCEDURES"

### Our Abpromise to you: Quality guaranteed and expert technical support

- Replacement or refund for products not performing as stated on the datasheet
- Valid for 12 months from date of delivery
- Response to your inquiry within 24 hours
- We provide support in Chinese, English, French, German, Japanese and Spanish
- Extensive multi-media technical resources to help you
- We investigate all quality concerns to ensure our products perform to the highest standards

If the product does not perform as described on this datasheet, we will offer a refund or replacement. For full details of the Abpromise,

please visit <https://www.abcam.cn/abpromise> or contact our technical team.

## Terms and conditions

---

- Guarantee only valid for products bought direct from Abcam or one of our authorized distributors