

Anti-ICAM1 antibody [EPR19938] ab206398

重组 RabMAb

4 References **4 图像**

概述

产品名称	Anti-ICAM1抗体[EPR19938]
描述	兔单克隆抗体[EPR19938] to ICAM1
宿主	Rabbit
经测试应用	适用于: IHC-P, WB
种属反应性	与反应: Rat
免疫原	Recombinant fragment. This information is proprietary to Abcam and/or its suppliers.
阳性对照	WB: Rat spleen, lung, liver and kidney lysates; C6 and L6 whole cell lysates. IHC-P: Rat liver and kidney tissues.
常规说明	<p>This product is a recombinant monoclonal antibody, which offers several advantages including:</p> <ul style="list-style-type: none"> - High batch-to-batch consistency and reproducibility - Improved sensitivity and specificity - Long-term security of supply - Animal-free production <p>For more information see here.</p> <p>Our RabMAb[®] technology is a patented hybridoma-based technology for making rabbit monoclonal antibodies. For details on our patents, please refer to RabMAb[®] patents.</p>

性能

形式	Liquid
存放说明	Shipped at 4°C. Store at +4°C short term (1-2 weeks). Upon delivery aliquot. Store at -20°C long term. Avoid freeze / thaw cycle.
存储溶液	<p>pH: 7.2</p> <p>Preservative: 0.01% Sodium azide</p> <p>Constituents: 59% PBS, 40% Glycerol (glycerin, glycerine), 0.05% BSA</p>
纯度	Protein A purified
克隆	单克隆
克隆编号	EPR19938
同种型	IgG

应用

The Abpromise guarantee

Abpromise™ 承诺保证使用 ab206398 于以下的经测试应用

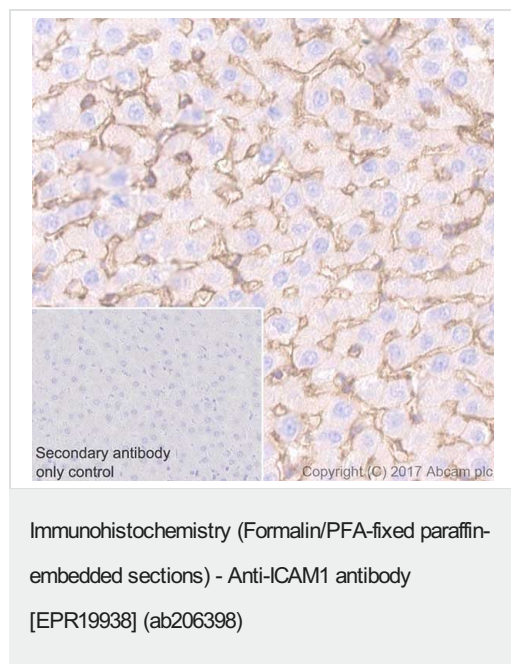
“应用说明”部分 下显示的仅为推荐的起始稀释度;实际最佳的稀释度/浓度应由使用者检定。

应用	Ab 评论	说明
IHC-P		1/2000. Perform heat mediated antigen retrieval with Tris/EDTA buffer pH 9.0 before commencing with IHC staining protocol.
WB		1/5000. Detects a band of approximately 80-110 kDa (predicted molecular weight: 60 kDa).

靶标

功能	ICAM proteins are ligands for the leukocyte adhesion protein LFA-1 (integrin alpha-L/beta-2). During leukocyte trans-endothelial migration, ICAM1 engagement promotes the assembly of endothelial apical cups through ARHGEF26/SGEF and RHOG activation. In case of rhinovirus infection acts as a cellular receptor for the virus.
序列相似性	Belongs to the immunoglobulin superfamily. ICAM family. Contains 5 Ig-like C2-type (immunoglobulin-like) domains.
翻译后修饰	Monoubiquitinated, which is promoted by MARCH9 and leads to endocytosis.
细胞定位	Membrane.

图片



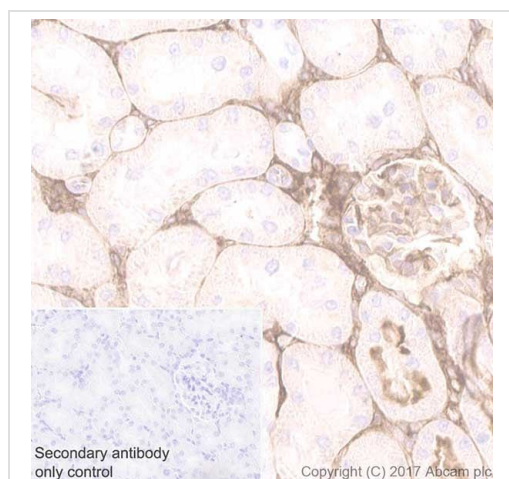
Immunohistochemical analysis of paraffin-embedded rat liver tissue labeling ICAM1 with ab206398 at 1/2000 dilution, followed by Goat Anti-Rabbit IgG H&L (HRP) ([ab97051](#)) at 1/500 dilution.

Membranous staining on sinusoidal endothelial cells of rat liver [PMID: 17058232].

Counter stained with Hematoxylin.

Secondary antibody only control: Used PBS instead of primary antibody, secondary antibody is Goat Anti-Rabbit IgG H&L (HRP) ([ab97051](#)) at 1/500 dilution.

Perform heat mediated antigen retrieval with Tris/EDTA buffer pH 9.0 before commencing with IHC staining protocol.



Immunohistochemistry (Formalin/PFA-fixed paraffin-embedded sections) - Anti-ICAM1 antibody [EPR19938] (ab206398)

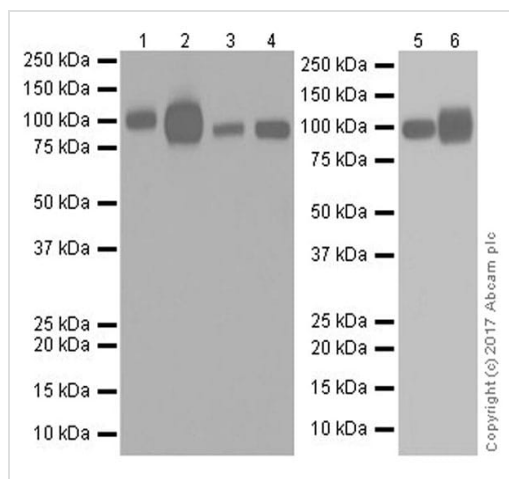
Immunohistochemical analysis of paraffin-embedded rat kidney tissue labeling ICAM1 with ab206398 at 1/2000 dilution, followed by Goat Anti-Rabbit IgG H&L (HRP) ([ab97051](#)) at 1/500 dilution.

Positive staining on extracellular matrix and blood vessels of rat kidney [PMID: 9198039] [PMID 7902311].

Counter stained with Hematoxylin.

Secondary antibody only control: Used PBS instead of primary antibody, secondary antibody is Goat Anti-Rabbit IgG H&L (HRP) ([ab97051](#)) at 1/500 dilution.

Perform heat mediated antigen retrieval with Tris/EDTA buffer pH 9.0 before commencing with IHC staining protocol.



Western blot - Anti-ICAM1 antibody [EPR19938] (ab206398)

All lanes : Anti-ICAM1 antibody [EPR19938] (ab206398) at 1/5000 dilution

Lane 1 : Rat spleen lysate at 20 µg

Lane 2 : Rat lung lysate at 20 µg

Lane 3 : C6 (Rat glial tumor cell line) whole cell lysate at 10 µg

Lane 4 : L6 (Rat skeletal muscle cell line) whole cell lysate at 10 µg

Lane 5 : Rat liver lysate at 20 µg

Lane 6 : Rat kidney lysate at 20 µg

Secondary

All lanes : Goat Anti-Rabbit IgG H&L (HRP) ([ab97051](#)) at 1/100000 dilution

Predicted band size: 60 kDa

Observed band size: 80-110 kDa

Blocking/Dilution buffer: 5% NFDM/TBST.

Exposure time: Lanes 1-4: 5 seconds; Lanes 5/6: 1 minute.

The observed molecular weight is consistent with the literature (PMID: 1712683).

Why choose a recombinant antibody?



Research with confidence
Consistent and reproducible results



Long-term and scalable supply
Recombinant technology



Success from the first experiment
Confirmed specificity



Ethical standards compliant
Animal-free production

Anti-ICAM1 antibody [EPR19938] (ab206398)

Please note: All products are "FOR RESEARCH USE ONLY. NOT FOR USE IN DIAGNOSTIC PROCEDURES"

Our Abpromise to you: Quality guaranteed and expert technical support

- Replacement or refund for products not performing as stated on the datasheet
- Valid for 12 months from date of delivery
- Response to your inquiry within 24 hours
- We provide support in Chinese, English, French, German, Japanese and Spanish
- Extensive multi-media technical resources to help you
- We investigate all quality concerns to ensure our products perform to the highest standards

If the product does not perform as described on this datasheet, we will offer a refund or replacement. For full details of the Abpromise, please visit <https://www.abcam.cn/abpromise> or contact our technical team.

Terms and conditions

- Guarantee only valid for products bought direct from Abcam or one of our authorized distributors