


Anti-HuR / ELAVL1 antibody ab28660

★★★★★ [2 Abreviews](#) [5 References](#) [2 图像](#)

概述

产品名称	Anti-HuR / ELAVL1抗体
描述	兔多克隆抗体to HuR / ELAVL1
宿主	Rabbit
经测试应用	适用于: WB
种属反应性	与反应: Human 预测可用于: Mouse, Chicken, Cow 
免疫原	Synthetic peptide corresponding to Human HuR/ ELAVL1 aa 1-100 conjugated to keyhole limpet haemocyanin. (Peptide available as ab28843)
常规说明	<p>The Life Science industry has been in the grips of a reproducibility crisis for a number of years. Abcam is leading the way in addressing this with our range of recombinant monoclonal antibodies and knockout edited cell lines for gold-standard validation. Please check that this product meets your needs before purchasing.</p> <p>If you have any questions, special requirements or concerns, please send us an inquiry and/or contact our Support team ahead of purchase. Recommended alternatives for this product can be found below, along with publications, customer reviews and Q&As</p>

性能

形式	Liquid
存放说明	Shipped at 4°C. Store at +4°C short term (1-2 weeks). Upon delivery aliquot. Store at -20°C or -80°C. Avoid freeze / thaw cycle.
存储溶液	pH: 7.40 Preservative: 0.02% Sodium azide Constituent: PBS Batches of this product that have a concentration < 1mg/ml may have BSA added as a stabilising agent. If you would like information about the formulation of a specific lot, please contact our scientific support team who will be happy to help.
纯度	Immunogen affinity purified
克隆	多克隆

同种型IgG

应用

The Abpromise guarantee **Abpromise™**承诺保证使用ab28660于以下的经测试应用

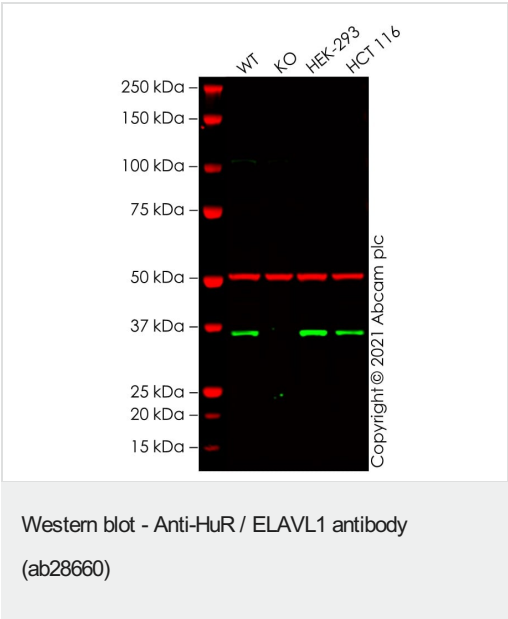
“应用说明”部分 下显示的仅为推荐的起始稀释度;实际最佳的稀释度/浓度应由使用者检定。

应用	Ab评论	说明
WB	★★★★★ (1)	Use a concentration of 1 µg/ml. Detects a band of approximately 36 kDa (predicted molecular weight: 36 kDa). Another band of approximately 52 kDa is also detected, we are unsure as the identity of this band.

靶标

功能	Involved in 3'-UTR ARE-mediated MYC stabilization. Binds avidly to the AU-rich element in FOS and IL3/interleukin-3 mRNAs. In the case of the FOS AU-rich element, HUR binds to a core element of 27 nucleotides that contain AUUUA, AUUUUA and AUUUUUA motifs.
组织特异性	Ubiquitous.
序列相似性	Belongs to the RRM elav family. Contains 3 RRM (RNA recognition motif) domains.
翻译后修饰	Methylated at Arg-217 by CARM1 in macrophages in response to LPS challenge.
细胞定位	Cytoplasm.

图片



All lanes : Anti-HuR / ELAVL1 antibody (ab28660) at 1 µg/ml

- Lane 1 : Wild-type SW480 cell lysate
- Lane 2 : ELAVL1 knockout SW480 cell lysate
- Lane 3 : HEK-293 cell lysate
- Lane 4 : HCT 116 cell lysate

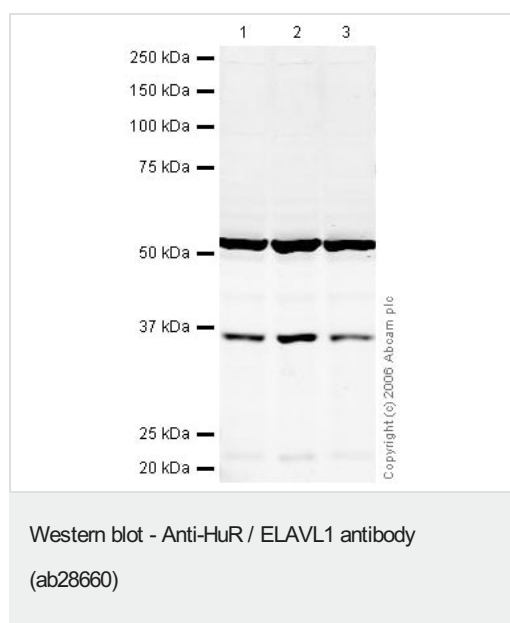
Lysates/proteins at 20 µg per lane.

Performed under reducing conditions.

Predicted band size: 36 kDa
Observed band size: 36 kDa

False colour image of Western blot: Anti-HuR / ELAVL1 antibody

staining at 1 µg/ml, shown in green; Mouse anti-Alpha Tubulin [DM1A] ([ab7291](#)) loading control staining at 1/20000 dilution, shown in red. In Western blot, ab28660 was shown to bind specifically to HuR / ELAVL1. A band was observed at 36 kDa in wild-type SW480 cell lysates with no signal observed at this size in ELAVL1 knockout cell line [ab270485](#) (knockout cell lysate [ab270508](#)). To generate this image, wild-type and ELAVL1 knockout SW480 cell lysates were analysed. First, samples were run on an SDS-PAGE gel then transferred onto a nitrocellulose membrane. Membranes were blocked in 3 % milk in TBS-0.1 % Tween[®] 20 (TBS-T) before incubation with primary antibodies overnight at 4 °C. Blots were washed four times in TBS-T, incubated with secondary antibodies for 1 h at room temperature, washed again four times then imaged. Secondary antibodies used were Goat anti-Rabbit IgG H&L (IRDye[®] 800CW) preabsorbed ([ab216773](#)) and Goat anti-Mouse IgG H&L (IRDye[®] 680RD) preabsorbed ([ab216776](#)) at 1/20000 dilution.



All lanes : Anti-HuR / ELAVL1 antibody (ab28660) at 1 µg/ml

Lane 1 : HeLa (Human epithelial carcinoma cell line) Whole Cell Lysate

Lane 2 : Jurkat whole cell lysate ([ab7899](#))

Lane 3 : A-431 whole cell lysate ([ab7909](#))

Lysates/proteins at 20 µg per lane.

Secondary

All lanes : Goat polyclonal to Rabbit IgG (Alexa Fluor[®] 680) at 1/10000 dilution

Performed under reducing conditions.

Predicted band size: 36 kDa

Observed band size: 36 kDa

Additional bands at: 52 kDa. We are unsure as to the identity of these extra bands.

Please note: All products are "FOR RESEARCH USE ONLY. NOT FOR USE IN DIAGNOSTIC PROCEDURES"

Our Abpromise to you: Quality guaranteed and expert technical support

- Replacement or refund for products not performing as stated on the datasheet
- Valid for 12 months from date of delivery
- Response to your inquiry within 24 hours
- We provide support in Chinese, English, French, German, Japanese and Spanish
- Extensive multi-media technical resources to help you
- We investigate all quality concerns to ensure our products perform to the highest standards

If the product does not perform as described on this datasheet, we will offer a refund or replacement. For full details of the Abpromise, please visit <https://www.abcam.cn/abpromise> or contact our technical team.

Terms and conditions

- Guarantee only valid for products bought direct from Abcam or one of our authorized distributors