

# Anti-HtrA3 antibody - Catalytic domain ab65911

[1 References](#) [1 图像](#)

### 概述

产品名称	Anti-HtrA3抗体- Catalytic domain
描述	兔多克隆抗体to HtrA3 - Catalytic domain
宿主	Rabbit
特异性	ab65911 recognizes both of the isoforms of HtrA3.
经测试应用	适用于: WB
种属反应性	与反应: Human
免疫原	Synthetic peptide based on the catalytic domain of human HtrA3.
阳性对照	Extracts of SW 620 in Serum Free, or treated with TPA, IL 1-Alpha, or IL 1-Beta.
常规说明	<p>The Life Science industry has been in the grips of a reproducibility crisis for a number of years. Abcam is leading the way in addressing this with our range of recombinant monoclonal antibodies and knockout edited cell lines for gold-standard validation. Please check that this product meets your needs before purchasing.</p> <p>If you have any questions, special requirements or concerns, please send us an inquiry and/or contact our Support team ahead of purchase. Recommended alternatives for this product can be found below, along with publications, customer reviews and Q&amp;As</p>

### 性能

形式	Liquid
存放说明	Shipped at 4°C. Store at -20°C. Stable for 12 months at -20°C.
存储溶液	pH: 7.40 Preservative: 0.05% Sodium azide Constituents: PBS, 50% Glycerol, 2.9% Sodium chloride
纯度	Immunogen affinity purified
克隆	多克隆
同种型	IgG

### 应用

The Abpromise guarantee

**Abpromise™** 承诺保证使用ab65911于以下的经测试应用

“应用说明”部分 下显示的仅为推荐的起始稀释度;实际最佳的稀释度/浓度应由使用者检定。

应用	Ab评论	说明
WB		

#### 应用说明

WB: 1/1000 when using colorimetric substrates such as BCIP/NBT, and 1/5000 for chemiluminescent substrates. Detects bands of approximately 48 & 40 kDa (predicted molecular weight: 50 & 38 kDa).

Not yet tested in other applications.

Optimal dilutions/concentrations should be determined by the end user.

#### 靶标

##### 功能

Probable serine protease.

##### 组织特异性

Widely expressed, with highest levels in both adult and fetal heart, ovary, uterus placenta, and bladder. Isoform 1 is predominant in heart and skeletal muscle, whereas isoform 2 is predominant in placenta and kidney.

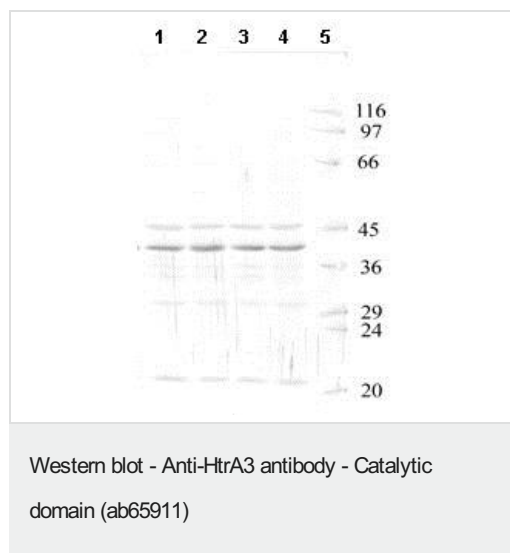
##### 序列相似性

Belongs to the peptidase S1B family.  
Contains 1 IGFBP N-terminal domain.  
Contains 1 Kazal-like domain.  
Contains 1 PDZ (DHR) domain.

##### 细胞定位

Secreted.

#### 图片



**All lanes :** Anti-HtrA3 antibody - Catalytic domain (ab65911) at 1/1000 dilution

**Lane 1 :** SW 620 with SF

**Lane 2 :** SW 620 with TPA

**Lane 3 :** SW 620 with IL 1-Alpha

**Lane 4 :** SW 620 with IL 1-Beta

**Lane 5 :** Molecular weight markers

**Predicted band size:** 50 , 38 kDa

**Observed band size:** 40,48 kDa

Multiple additional bands are observed. We are unsure as to the identity of these extra bands.

**Please note:** All products are "FOR RESEARCH USE ONLY. NOT FOR USE IN DIAGNOSTIC PROCEDURES"

### **Our Abpromise to you: Quality guaranteed and expert technical support**

---

- Replacement or refund for products not performing as stated on the datasheet
- Valid for 12 months from date of delivery
- Response to your inquiry within 24 hours
  
- We provide support in Chinese, English, French, German, Japanese and Spanish
- Extensive multi-media technical resources to help you
- We investigate all quality concerns to ensure our products perform to the highest standards

If the product does not perform as described on this datasheet, we will offer a refund or replacement. For full details of the Abpromise, please visit <https://www.abcam.cn/abpromise> or contact our technical team.

### **Terms and conditions**

---

- Guarantee only valid for products bought direct from Abcam or one of our authorized distributors