

Anti-HSV1 ICP8 Major DNA binding protein antibody [10A3] ab20193

★★★★★ [1 Abreviews](#) [11 References](#) [1 图像](#)

概述

产品名称	Anti-HSV1 ICP8 Major DNA binding蛋白抗体[10A3]
描述	小鼠单克隆抗体[10A3] to HSV1 ICP8 Major DNA binding蛋白
宿主	Mouse
经测试应用	适用于: WB, ICC/IF
种属反应性	与反应: Herpes simplex virus
免疫原	ICP8 purified from U-35-VERO cells.
常规说明	<p>The Life Science industry has been in the grips of a reproducibility crisis for a number of years. Abcam is leading the way in addressing this with our range of recombinant monoclonal antibodies and knockout edited cell lines for gold-standard validation. Please check that this product meets your needs before purchasing.</p> <p>If you have any questions, special requirements or concerns, please send us an inquiry and/or contact our Support team ahead of purchase. Recommended alternatives for this product can be found below, along with publications, customer reviews and Q&As</p>

性能

形式	Liquid
存放说明	Shipped at 4°C. Store at +4°C short term (1-2 weeks). Upon delivery aliquot. Store at -20°C or -80°C. Avoid freeze / thaw cycle.
存储溶液	Preservative: 0.02% Sodium azide Constituent: 99.98% PBS
纯度	Protein A/G purified
克隆	单克隆
克隆编号	10A3
骨髓瘤	Sp2
同种型	IgG1
轻链类型	unknown

应用

The Abpromise guarantee **Abpromise™** 承诺保证使用 ab20193 于以下的经测试应用

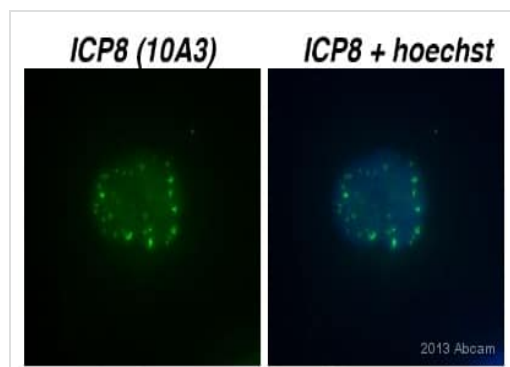
“应用说明”部分 下显示的仅为推荐的起始稀释度;实际最佳的稀释度/浓度应由使用者检定。

应用	Ab评论	说明
WB		Use at an assay dependent dilution. Predicted molecular weight: 129 kDa.
ICC/IF	★★★★★ (1)	Use at an assay dependent dilution.

靶标

相关性 Herpes simplex type 1 (HSV-1) belongs to a family that includes HSV-2, Epstein-Barr virus (EBV) and Varicella zoster (chicken pox) virus amongst others. HSV-1 and HSV-2 are extremely difficult to distinguish from each other. Members of this family have a characteristic virion structure. The double stranded DNA genome is contained within an icosahedral capsid embedded in a proteinaceous layer (tegument) and surrounded by a lipid envelope, derived from the nuclear membrane of the last host, which is decorated with virus-specific glycoproteins spikes. These viruses are capable of entering a latent phase where the host shows no visible sign of infection and levels of infectious agent become very low. During the latent phase the viral DNA is integrated into the genome of the host cell. ICP8 is the major DNA binding protein of herpes simplex virus type 1.

图片



ab20193 staining HSV1 ICP8 Major DNA binding protein in Human U2OS by ICC/IF (Immunocytochemistry/immunofluorescence). Cells were fixed with paraformaldehyde, permeabilized with 0.5% Triton X-100 and blocked with 5% serum for 20 minutes at 22°C. Samples were incubated with primary antibody (1/100) for 1 hour at 22°C. An Alexa Fluor® 488-conjugated Goat anti-mouse IgG polyclonal (1/1000) was used as the secondary antibody.

Immunocytochemistry/ Immunofluorescence - Anti-HSV1 ICP8 Major DNA binding protein antibody [10A3] (ab20193)

This image is courtesy of an anonymous Abreview

Please note: All products are "FOR RESEARCH USE ONLY. NOT FOR USE IN DIAGNOSTIC PROCEDURES"

Our Abpromise to you: Quality guaranteed and expert technical support

- Replacement or refund for products not performing as stated on the datasheet
- Valid for 12 months from date of delivery
- Response to your inquiry within 24 hours

- We provide support in Chinese, English, French, German, Japanese and Spanish
- Extensive multi-media technical resources to help you
- We investigate all quality concerns to ensure our products perform to the highest standards

If the product does not perform as described on this datasheet, we will offer a refund or replacement. For full details of the Abpromise, please visit <https://www.abcam.cn/abpromise> or contact our technical team.

Terms and conditions

- Guarantee only valid for products bought direct from Abcam or one of our authorized distributors