

Anti-HSV 1 ICP4 Immediate Early Protein antibody [10F1] ab6514

★★★★★ [5 Abreviews](#) [55 References](#) [3 图像](#)

概述

产品名称	抗单纯疱疹病毒1 ICP4 Immediate Early蛋白抗体[10F1]
描述	小鼠单克隆抗体[10F1] to 单纯疱疹病毒1 ICP4 Immediate Early蛋白
宿主	Mouse
特异性	ELISA titer 1/25,600 absorption of 0.10
经测试应用	适用于: WB, ELISA, ICC/IF
种属反应性	与反应: Herpes simplex virus
免疫原	Tissue, cells or virus corresponding to HSV 1 ICP4 Immediate Early Protein.
常规说明	<p>The Life Science industry has been in the grips of a reproducibility crisis for a number of years. Abcam is leading the way in addressing this with our range of recombinant monoclonal antibodies and knockout edited cell lines for gold-standard validation. Please check that this product meets your needs before purchasing.</p> <p>If you have any questions, special requirements or concerns, please send us an inquiry and/or contact our Support team ahead of purchase. Recommended alternatives for this product can be found below, along with publications, customer reviews and Q&As</p>

性能

形式	Liquid
存放说明	Shipped at 4°C. Upon delivery aliquot and store at -20°C or -80°C. Avoid repeated freeze / thaw cycles.
存储溶液	pH: 7.4
纯度	Protein A purified
克隆	单克隆
克隆编号	10F1
骨髓瘤	NS1/1-Ag4-1
同种型	IgG1
轻链类型	kappa

应用

The Abpromise guarantee Abpromise™承诺保证使用ab6514于以下的经测试应用

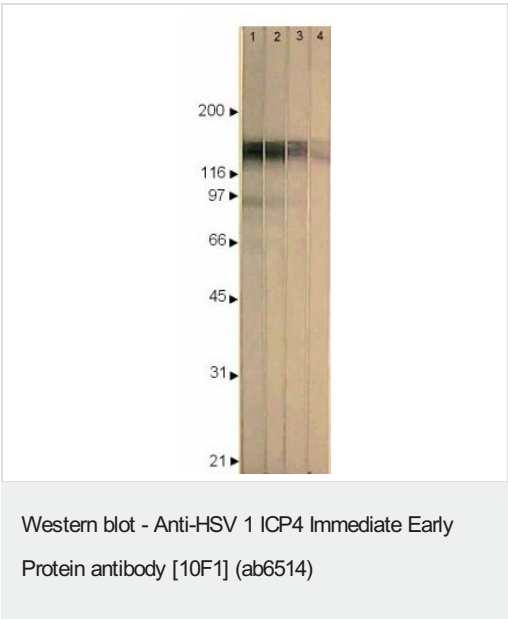
“应用说明”部分 下显示的仅为推荐的起始稀释度;实际最佳的稀释度/浓度应由使用者检定。

应用	Ab评论	说明
WB	★★★★★ (3)	1/800.
ELISA		1/25600.
ICC/IF	★★★★★ (2)	1/25600.

靶标

相关性	This IE protein is a multifunctional protein capable of migrating to the nucleus, binding to DNA, trans-activating other viral genes, and autoregulating its own synthesis. Binding of ICP4 to alpha genes causes repression of their expression. ICP4 also acts as a transcriptional activator of beta and gamma genes.
细胞定位	Nuclear

图片



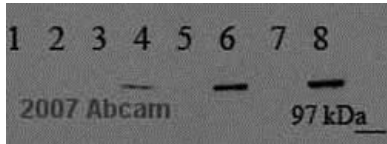
- Lane 1 :** Anti-HSV 1 ICP4 Immediate Early Protein antibody [10F1] (ab6514) at 1/200 dilution
- Lane 2 :** Anti-HSV 1 ICP4 Immediate Early Protein antibody [10F1] (ab6514) at 1/400 dilution
- Lane 3 :** Anti-HSV 1 ICP4 Immediate Early Protein antibody [10F1] (ab6514) at 1/800 dilution
- Lane 4 :** Anti-HSV 1 ICP4 Immediate Early Protein antibody [10F1] (ab6514) at 1/1600 dilution

All lanes : BCIP/NBT. HSV-1 MacIntyre/Vero infected cell extract

Lysates/proteins at 10 µg per lane.

Secondary

All lanes : Anti-Mouse secondary at 1/5000 dilution



Western blot - Anti-HSV 1 ICP4 Immediate Early Protein antibody [10F1] (ab6514)

This image is courtesy of an anonymous Abreview

All lanes : Anti-HSV 1 ICP4 Immediate Early Protein antibody [10F1] (ab6514) at 1/1000 dilution

Lane 1 : HeLa cells (whole cell lysate) - mock infection, cytosolic fraction

Lane 2 : HeLa cells (whole cell lysate) - mock infection, membrane fraction

Lane 3 : HeLa cells (whole cell lysate) - mock infection, nuclear fraction

Lane 4 : HeLa cells (whole cell lysate) Infected with HSV KOS for 16 hours - cytosolic fraction

Lane 5 : HeLa cells (whole cell lysate) Infected with HSV KOS for 16 hours -membrane fraction

Lane 6 : HeLa cells (whole cell lysate) Infected with HSV KOS for 16 hours - nuclear fraction

Lane 7 : HeLa cells (whole cell lysate) - mock infected

Lane 8 : HeLa cells (whole cell lysate) Infected with HSV KOS for 16 hours

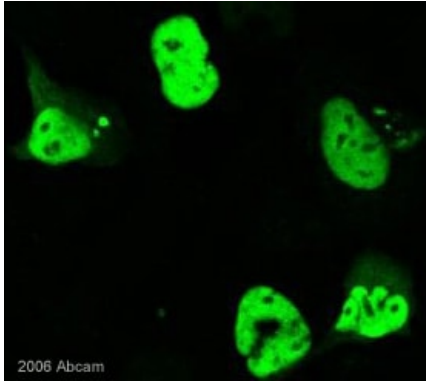
Lysates/proteins at 10 µg per lane.

Secondary

All lanes : HRP conjugated sheep anti-mouse IgG

Observed band size: 97 kDa

As shown, ICP4 is detected mainly in the nuclear fraction of infected cells (lane 6). The presence of ICP4 in the cytosolic fraction (lane 4) probably represents the protein undergoing synthesis.



ab6514 (1/5000) staining HSV1 ICP4 immediate Early Protein in 293T cells transiently transfected with a plasmid expressing HSV ICP4 (green). Cells were formaldehyde-fixed and incubated with the primary antibody for 1 hour. A FITC conjugated rabbit polyclonal antibody was used as the secondary antibody.

Immunocytochemistry/ Immunofluorescence - Anti-HSV 1 ICP4 Immediate Early Protein antibody [10F1] (ab6514)

This image is courtesy of an anonymous Abreview

Please note: All products are "FOR RESEARCH USE ONLY. NOT FOR USE IN DIAGNOSTIC PROCEDURES"

Our Abpromise to you: Quality guaranteed and expert technical support

- Replacement or refund for products not performing as stated on the datasheet
- Valid for 12 months from date of delivery
- Response to your inquiry within 24 hours
- We provide support in Chinese, English, French, German, Japanese and Spanish
- Extensive multi-media technical resources to help you
- We investigate all quality concerns to ensure our products perform to the highest standards

If the product does not perform as described on this datasheet, we will offer a refund or replacement. For full details of the Abpromise, please visit <https://www.abcam.cn/abpromise> or contact our technical team.

Terms and conditions

- Guarantee only valid for products bought direct from Abcam or one of our authorized distributors